

EEF1A1 Recombinant antibody, PBS Only

Catalog Number: **81377-1-PBS**

Basic Information

Catalog Number: 81377-1-PBS	GenBank Accession Number: BC014224	Purification Method: Protein A purification
Size: 100ug , Concentration: 1mg/ml by Nanodrop;	GeneID (NCBI): 1915	CloneNo.: 2B16
Source: Rabbit	UNIPROT ID: P68104	
Isotype: IgG	Full Name: eukaryotic translation elongation factor 1 alpha 1	
Immunogen Catalog Number: AG1938	Calculated MW: 462 aa, 50 kDa	
	Observed MW: 50 kDa	

Applications

Tested Applications:
Indirect ELISA, IP, IF/ICC, IHC, WB

Species Specificity:
rat, mouse, human

Background Information

EEF1A1, also named as EEF1A, EF1A and LENG7, belongs to the GTP-binding elongation factor family. This protein promotes the GTP-dependent binding of aminoacyl-tRNA to the A-site of ribosomes during protein biosynthesis. It is a typical housekeeping gene product required for the maintenance of cell proliferation and/or survival. In addition, EEF1A1 protects the aminoester bond against hydrolysis until a correct match between the codon on mRNA and the anti-codon on tRNA can be achieved.

Storage

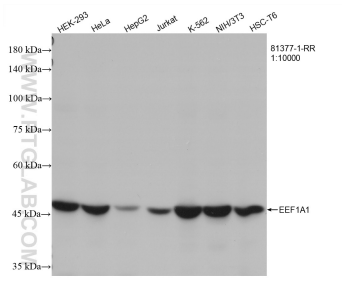
Storage:
Store at -80°C.

Storage Buffer:
PBS Only

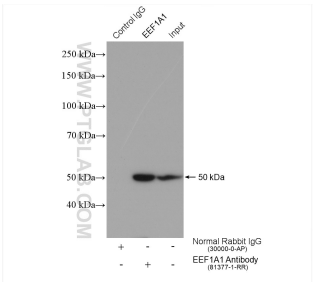
For technical support and original validation data for this product please contact:
T: 1 (888) 4PTGLAB (1-888-478-4522) (toll free in USA), or 1(312) 455-8498 (outside USA)
E: proteintech@ptglab.com
W: ptglab.com

This product is exclusively available under Proteintech Group brand and is not available to purchase from any other manufacturer.

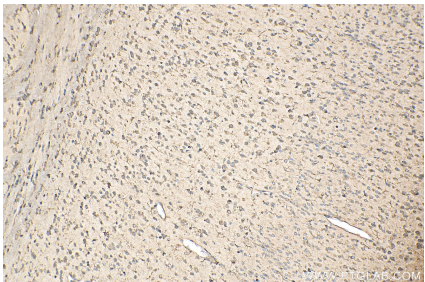
Selected Validation Data



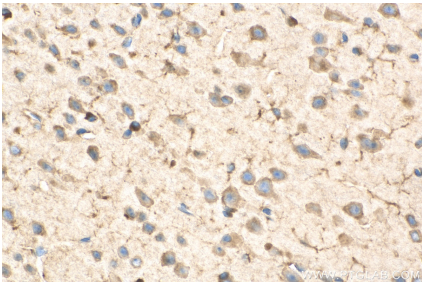
Various lysates were subjected to SDS PAGE followed by western blot with 81377-1-RR (EEF1A1 antibody) at dilution of 1:12000 incubated at room temperature for 1.5 hours. This data was developed using the same antibody clone with 81377-1-PBS in a different storage buffer formulation.



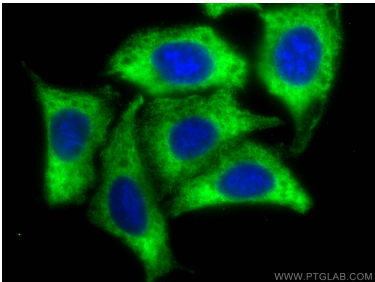
IP result of anti-EEF1A1 (IP:81377-1-RR, 4ug; Detection:81377-1-RR 1:8000) with HeLa cells lysate 1720 ug. This data was developed using the same antibody clone with 81377-1-PBS in a different storage buffer formulation.



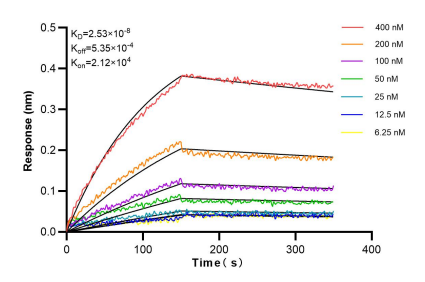
Immunohistochemical analysis of paraffin-embedded mouse brain tissue slide using 81377-1-RR (EEF1A1 antibody) at dilution of 1:500 (under 10x lens). Heat mediated antigen retrieval with Tris-EDTA buffer (pH 9.0). This data was developed using the same antibody clone with 81377-1-PBS in a different storage buffer formulation.



Immunohistochemical analysis of paraffin-embedded mouse brain tissue slide using 81377-1-RR (EEF1A1 antibody) at dilution of 1:500 (under 40x lens). Heat mediated antigen retrieval with Tris-EDTA buffer (pH 9.0). This data was developed using the same antibody clone with 81377-1-PBS in a different storage buffer formulation.



Immunofluorescent analysis of (-20°C Methanol) fixed HepG2 cells using EEF1A1 antibody (81377-1-RR, Clone: 2B16) at dilution of 1:400 and CoraLite® 488-Conjugated AffiniPure Goat Anti-Rabbit IgG(H+L). This data was developed using the same antibody clone with 81377-1-PBS in a different storage buffer formulation.



Bilayer interferometry (BLI) kinetic assays of 81377-1-RR against Human EEF1A1 were performed. The affinity constant is 25.3 nM.