

For Research Use Only

EEF1A1 Recombinant antibody

Catalog Number: 81377-1-RR



Basic Information

Catalog Number: 81377-1-RR	GenBank Accession Number: BC014224	Purification Method: Protein A purification
Size: 100ul , Concentration: 250 µg/ml by Nanodrop;	GeneID (NCBI): 1915	CloneNo.: 2B16
Source: Rabbit	Full Name: eukaryotic translation elongation factor 1 alpha 1	Recommended Dilutions: WB 1:5000-1:50000 IP 0.5-4.0 ug for IP and 1:2000-1:16000 for WB
Isotype: IgG	Calculated MW: 462 aa, 50 kDa	IHC 1:250-1:1000 IF 1:200-1:800
Immunogen Catalog Number: AG1938	Observed MW: 50 kDa	

Applications

Tested Applications:

IF, IHC, IP, WB, ELISA

Species Specificity:

Human, Mouse, Rat

Note-IHC: suggested antigen retrieval with TE buffer pH 9.0; (*) Alternatively, antigen retrieval may be performed with citrate buffer pH 6.0

Positive Controls:

WB : HEK-293 cells, HeLa cells, HepG2 cells, Jurkat cells, K-562 cells, NIH/3T3 cells, HSC-T6 cells

IP : HeLa cells,

IHC : mouse brain tissue, human pancreas cancer tissue

IF : HepG2 cells,

Background Information

EEF1A1, also named as EEF1A, EF1A and LENG7, belongs to the GTP-binding elongation factor family. This protein promotes the GTP-dependent binding of aminoacyl-tRNA to the A-site of ribosomes during protein biosynthesis. It is a typical housekeeping gene product required for the maintenance of cell proliferation and/or survival. In addition, EEF1A1 protects the aminoester bond against hydrolysis until a correct match between the codon on mRNA and the anti-codon on tRNA can be achieved.

Storage

Storage:

Store at -20°C. Stable for one year after shipment.

Storage Buffer:

PBS with 0.02% sodium azide and 50% glycerol pH 7.3.

Aliquoting is unnecessary for -20°C storage

*** 20ul sizes contain 0.1% BSA

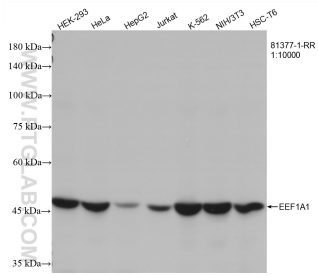
For technical support and original validation data for this product please contact:

T: 1 (888) 4PTGLAB (1-888-478-4522) (toll free in USA), or 1(312) 455-8498 (outside USA)

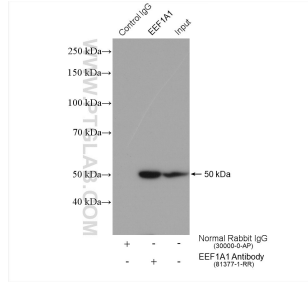
E: proteintech@ptglab.com
W: ptglab.com

This product is exclusively available under Proteintech Group brand and is not available to purchase from any other manufacturer.

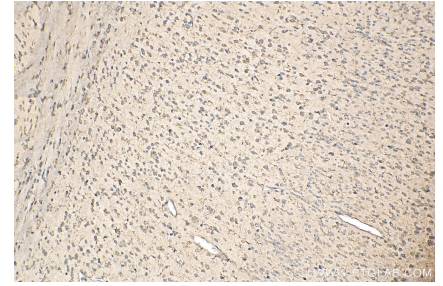
Selected Validation Data



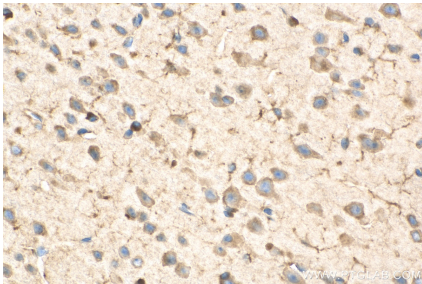
Various lysates were subjected to SDS PAGE followed by western blot with 81377-1-RR (EEF1A1 antibody) at dilution of 1:12000 incubated at room temperature for 1.5 hours.



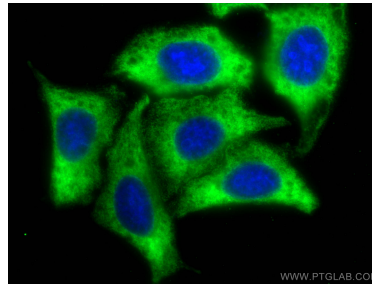
IP result of anti-EEF1A1(IP:81377-1-RR, 4ug; Detection:81377-1-RR 1:8000) with HeLa cells lysate 1720 ug.



Immunohistochemical analysis of paraffin-embedded mouse brain tissue slide using 81377-1-RR (EEF1A1 antibody) at dilution of 1:500 (under 10x lens). Heat mediated antigen retrieval with Tris-EDTA buffer (pH 9.0).



Immunohistochemical analysis of paraffin-embedded mouse brain tissue slide using 81377-1-RR (EEF1A1 antibody) at dilution of 1:500 (under 40x lens). Heat mediated antigen retrieval with Tris-EDTA buffer (pH 9.0).



Immunofluorescent analysis of (-20°C Methanol) fixed HepG2 cells using EEF1A1 antibody (81377-1-RR, Clone: 2B16) at dilution of 1:400 and CoraLite® 488-Conjugated AffiniPure Goat Anti-Rabbit IgG(H+L).