

For Research Use Only

# Phospho-TAU (Ser404) Recombinant antibody

Catalog Number: 81383-1-RR

2 Publications



## Basic Information

### Catalog Number:

81383-1-RR

### Size:

100ul, Concentration: 400 ug/ml by Nanodrop;

### Source:

Rabbit

### Isotype:

IgG

### GenBank Accession Number:

BC000558

### GeneID (NCBI):

4137

### UNIPROT ID:

P10636

### Full Name:

microtubule-associated protein tau

### Calculated MW:

37-46, 79-81 kDa

### Observed MW:

45-55 kDa

### Purification Method:

Protein A purification

### CloneNo.:

5I16

### Recommended Dilutions:

WB 1:5000-1:50000

## Applications

### Tested Applications:

WB, ELISA

### Cited Applications:

WB

### Species Specificity:

Human, Mouse

### Cited Species:

human, mouse

### Positive Controls:

WB : mouse brain tissue, λ phosphatase treated mouse brain tissue

## Background Information

Tau (tubulin-associated unit) is a microtubule-associated protein (also known as MAPT), expressed mainly in neurons of the central nervous system. Its primary function is to modulate microtubule dynamics for maintaining axonal cytoskeleton. The Tau protein has six isoforms produced from a single gene through alternative RNA splicing. Isoforms differ in number of inserts at the N-terminal half and the number of repeats at the C-terminal half (3 repeat-3R; 4 repeat-4R). Tau is hyperphosphorylated during aging and in age-related neurodegenerative diseases such as Alzheimer's disease (AD) and fronto-temporal dementia. Hyperphosphorylation of Tau leads to the formation of neurofibrillary tangles (NFT) in the neurons and glia cells, which is one of the hallmarks of AD.

## Notable Publications

Author	Pubmed ID	Journal	Application
Yingxi He	38653878	Neuromolecular Med	WB
Wentao Zhu	38356330	J Med Chem	WB

## Storage

### Storage:

Store at -20°C. Stable for one year after shipment.

### Storage Buffer:

PBS with 0.02% sodium azide and 50% glycerol pH 7.3.

Aliquoting is unnecessary for -20°C storage

\*\*\* 20ul sizes contain 0.1% BSA

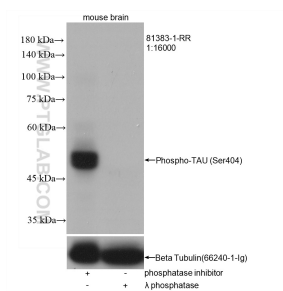
For technical support and original validation data for this product please contact:

T: 1 (888) 4PTGLAB (1-888-478-4522) (toll free in USA), or 1(312) 455-8498 (outside USA)

E: [proteintech@ptglab.com](mailto:proteintech@ptglab.com)  
W: [ptglab.com](http://ptglab.com)

This product is exclusively available under Proteintech Group brand and is not available to purchase from any other manufacturer.

## Selected Validation Data



Phosphatase inhibitor treated and  $\lambda$  phosphatase treated mouse brain tissue were subjected to SDS PAGE followed by western blot with 81383-1-RR (Phospho-TAU (Ser404) antibody) at dilution of 1:16000 incubated at room temperature for 1 hours. The membrane was stripped and re-blotted with Beta Tubulin antibody as loading control.