

For Research Use Only

GLUT1 Recombinant antibody

Catalog Number: 81463-1-RR **2 Publications**



Basic Information

Catalog Number: 81463-1-RR	GenBank Accession Number: BC121804	Purification Method: Protein A purification
Size: 100ul , Concentration: 1000 ug/ml by Nanodrop;	GeneID (NCBI): 6513	CloneNo.: 6F14
Source: Rabbit	UNIPROT ID: P11166	Recommended Dilutions: WB: 1:5000-1:50000 IHC: 1:1000-1:4000
Isotype: IgG	Full Name: solute carrier family 2 (facilitated glucose transporter), member 1	
Immunogen Catalog Number: AG16282	Calculated MW: 492 aa, 54 kDa	
	Observed MW: 45-55 kDa	

Applications

Tested Applications: WB, IHC, ELISA	Positive Controls:
Cited Applications: WB, IHC	WB : unboiled HEK-293 cells, HeLa cells (incubated at 37°C)
Species Specificity: human	IHC : human skin cancer tissue, human placenta tissue
Cited Species: human, mouse	
Note-IHC: suggested antigen retrieval with TE buffer pH 9.0; (*) Alternatively, antigen retrieval may be performed with citrate buffer pH 6.0	

Background Information

GLUT1, also known as SLC2A1, is a ubiquitously expressed glucose transporter and is responsible for the basal level of glucose uptake in most cell types. Human erythrocytes express the highest level of GLUT1. Defects in SLC2A1 are the cause of GLUT1 deficiency syndrome type 1 and type 2. High expression of GLUT1 has been reported to be a reliable immunohistochemical marker for juvenile hemangiomas. GLUT1 protein may appear as two or more distinct forms among 43 kDa to 55 kDa due to the different glycosylation states. And the conversion of the highly glycosylated form of GLUT1 to a less glycosylated form has been reported to correlate with differentiation (PMID: 8263524, 23302780).

Notable Publications

Author	Pubmed ID	Journal	Application
Zhao Cui	38622131	Cell Death Dis	WB,IHC
Jiajin Li	37311977	Br J Cancer	WB

Storage

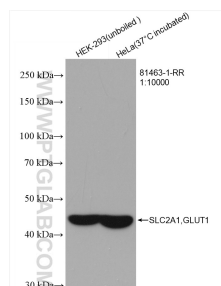
Storage:
Store at -20°C. Stable for one year after shipment.
Storage Buffer:
PBS with 0.02% sodium azide and 50% glycerol, pH7.3
Aliquoting is unnecessary for -20°C storage

*** 20ul sizes contain 0.1% BSA

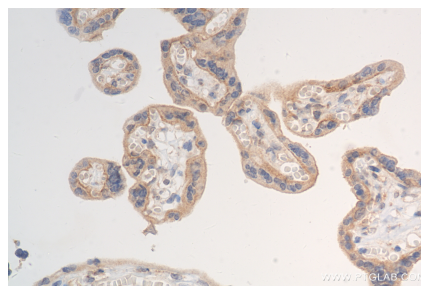
For technical support and original validation data for this product please contact:
T: 1 (888) 4PTGLAB (1-888-478-4522) (toll free in USA), or 1(312) 455-8498 (outside USA)
E: proteintech@ptglab.com
W: ptglab.com

This product is exclusively available under Proteintech Group brand and is not available to purchase from any other manufacturer.

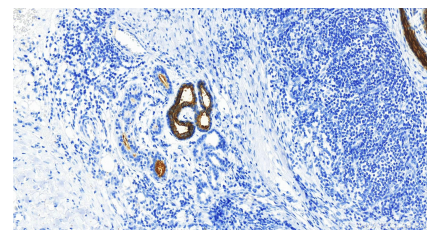
Selected Validation Data



Various lysates were subjected to SDS PAGE followed by western blot with 81463-1-RR (SLC2A1, GLUT1 antibody) at dilution of 1:10000 incubated at room temperature for 1.5 hours.



Immunohistochemical analysis of paraffin-embedded human placenta tissue slide using 81463-1-RR (GLUT1 antibody) at dilution of 1:500 (under 40x lens). Heat mediated antigen retrieval with Tris-EDTA buffer (pH 9.0).



Immunohistochemical analysis of paraffin-embedded skin cancer slide using 81463-1-RR (GLUT1 antibody) at dilution of 1:2000 (under 20x lens). Heat mediated antigen retrieval with Tris-EDTA buffer (pH 9.0).