

For Research Use Only

ENO1 Recombinant antibody

Catalog Number: 81478-1-RR



Basic Information

| | | |
|--|--|--|
| Catalog Number: 81478-1-RR | GenBank Accession Number: BC015641 | Purification Method: Protein A purification |
| Size: 100ul , Concentration: 1000 µg/ml by Nanodrop; | GeneID (NCBI): 2023 | CloneNo.: 2C20 |
| Source: Rabbit | ENSEMBL Gene ID: ENSG00000074800 | Recommended Dilutions: WB 1:5000-1:50000 IHC 1:1000-1:4000 IF 1:500-1:2000 |
| Isotype: IgG | UNIPROT ID: P06733 | |
| Immunogen Catalog Number: AG1692 | Full Name: enolase 1, (alpha) | |
| | Calculated MW: 47 kDa | |
| | Observed MW: 47 kDa | |

Applications

Tested Applications:

WB, IF, IHC, ELISA

Species Specificity:

Human, Mouse, Rat, Pig

Note-IHC: suggested antigen retrieval with TE buffer pH 9.0; (*) Alternatively, antigen retrieval may be performed with citrate buffer pH 6.0

Positive Controls:

WB : HEK-293 cells, mouse brain tissue, pig brain tissue, HeLa cells, HepG2 cells, PC-3 cells, MCF-7 cells, Jurkat cells, rat brain tissue

IHC : mouse brain tissue, human colon cancer tissue

IF : HepG2 cells,

Background Information

ENO1, also named as NNE, ENO1L1, MBPB1, MPB1 and MBP1, belongs to the enolase family. ENO1 is a metabolic enzyme involved in the synthesis of pyruvate. It also acts as a plasminogen receptor and mediates the activation of plasmin and extracellular matrix degradation. In tumor cells, ENO1 is up-regulated and supports the Warburg effect; it is expressed at the cell surface, where it promotes cancer invasion, and is subjected to a specific array of post-translational modifications, namely acetylation, methylation and phosphorylation. ENO1 overexpression and post-translational modifications could be of diagnostic and prognostic value in many cancer types. (PMID: 27814656). This antibody is specific to ENO1 and has no cross-reaction with ENO2 and ENO3.

Storage

Storage:

Store at -20°C. Stable for one year after shipment.

Storage Buffer:

PBS with 0.02% sodium azide and 50% glycerol pH 7.3.

Aliquoting is unnecessary for -20°C storage

*** 20ul sizes contain 0.1% BSA

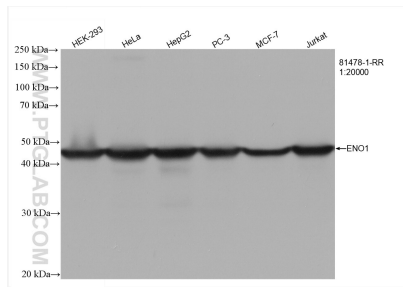
For technical support and original validation data for this product please contact:

T: 1 (888) 4PTGLAB (1-888-478-4522) (toll free in USA), or 1(312) 455-8498 (outside USA)

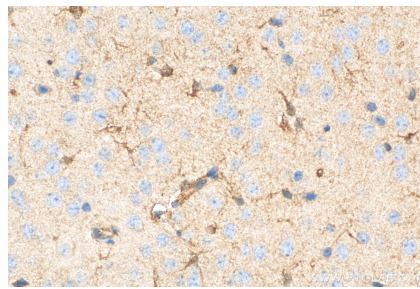
E: proteintech@ptglab.com
W: ptglab.com

This product is exclusively available under Proteintech Group brand and is not available to purchase from any other manufacturer.

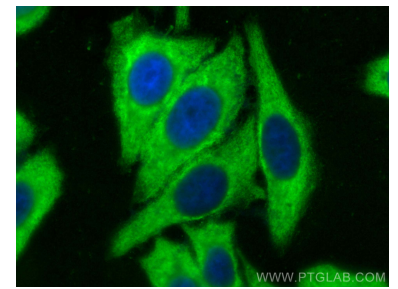
Selected Validation Data



Various lysates were subjected to SDS PAGE followed by western blot with 81478-1-RR (ENO1 antibody) at dilution of 1:20000 incubated at room temperature for 1.5 hours.



Immunohistochemical analysis of paraffin-embedded mouse brain tissue slide using 81478-1-RR (ENO1 antibody) at dilution of 1:2000 (under 40x lens). Heat mediated antigen retrieval with Tris-EDTA buffer (pH 9.0).



Immunofluorescent analysis of (-20°C Methanol) fixed HepG2 cells using ENO1 antibody (81478-1-RR, Clone: 2C20) at dilution of 1:1000 and CoraLite®488-Conjugated AffiniPure Goat Anti-Rabbit IgG(H+L).