

For Research Use Only

# PSAT1 Recombinant antibody, PBS Only



Catalog Number: 81479-1-PBS

## Basic Information

<b>Catalog Number:</b> 81479-1-PBS	<b>GenBank Accession Number:</b> BC004863	<b>Purification Method:</b> Protein A purification
<b>Size:</b> 100ug , Concentration: 1mg/ml by Nanodrop;	<b>GeneID (NCBI):</b> 29968	<b>CloneNo.:</b> 1O22
<b>Source:</b> Rabbit	<b>UNIPROT ID:</b> Q9Y617	
<b>Isotype:</b> IgG	<b>Full Name:</b> phosphoserine aminotransferase 1	
<b>Immunogen Catalog Number:</b> AG0776	<b>Calculated MW:</b> 40 kDa	
	<b>Observed MW:</b> 37-40 kDa	

## Applications

**Tested Applications:**  
WB, IF, Indirect ELISA

**Species Specificity:**  
Human, Mouse, Pig

## Background Information

PSAT1, also named as PSA and PSAT, belongs to the class-V pyridoxal-phosphate-dependent aminotransferase family and SerC subfamily. It catalyzes the reversible conversion of 3-phosphohydroxypyruvate to phosphoserine and of 3-hydroxy-2-oxo-4-phosphonooxybutanoate to phosphohydroxythreonine. PSAT1 represents a new interesting target for CRC therapy. It may be implicated in altered serine metabolism and schizophrenia spectrum conditions. (PMID: 18221502, 20955740)

## Storage

**Storage:**  
Store at -80°C.  
**Storage Buffer:**  
PBS Only

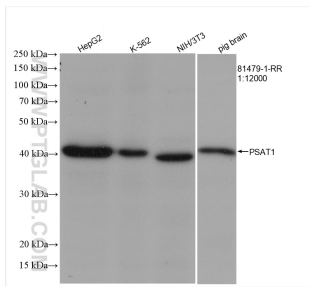
For technical support and original validation data for this product please contact:

T: 1 (888) 4PTGLAB (1-888-478-4522) (toll free in USA), or 1(312) 455-8498 (outside USA)

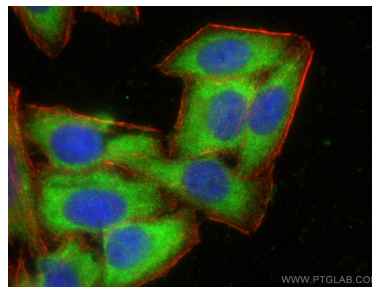
E: [proteintech@ptglab.com](mailto:proteintech@ptglab.com)  
W: [ptglab.com](http://ptglab.com)

**This product is exclusively available under Proteintech Group brand and is not available to purchase from any other manufacturer.**

## Selected Validation Data



Various lysates were subjected to SDS PAGE followed by western blot with 81479-1-RR (PSAT1 antibody) at dilution of 1:12000 incubated at room temperature for 1.5 hours. This data was developed using the same antibody clone with 81479-1-PBS in a different storage buffer formulation.



Immunofluorescent analysis of (-20°C Ethanol) fixed HepG2 cells using PSAT1 antibody (81479-1-RR, Clone: 1O22) at dilution of 1:400 and CoraLite®488-Conjugated AffiniPure Goat Anti-Rabbit IgG(H+L), CL594-phalloidin (red). This data was developed using the same antibody clone with 81479-1-PBS in a different storage buffer formulation.