

For Research Use Only

PSAT1 Recombinant antibody

Catalog Number: 81479-1-RR



Basic Information

Catalog Number: 81479-1-RR	GenBank Accession Number: BC004863	Purification Method: Protein A purification
Size: 100ul , Concentration: 400 µg/ml by Nanodrop;	GeneID (NCBI): 29968	CloneNo.: 1022
Source: Rabbit	Full Name: phosphoserine aminotransferase 1	Recommended Dilutions: WB 1:5000-1:50000 IF 1:200-1:800
Isotype: IgG	Calculated MW: 40 kDa	
Immunogen Catalog Number: AG0776	Observed MW: 37-40 kDa	

Applications

Tested Applications: IF, WB, ELISA	Positive Controls:
Species Specificity: Human, Mouse, Pig	WB : HepG2 cells, K-562 cells, NIH/3T3 cells, pig brain tissue IF : HepG2 cells,

Background Information

PSAT1, also named as PSA and PSAT, belongs to the class-V pyridoxal-phosphate-dependent aminotransferase family and SerC subfamily. It catalyzes the reversible conversion of 3-phosphohydroxypyruvate to phosphoserine and of 3-hydroxy-2-oxo-4-phosphonooxybutanoate to phosphohydroxythreonine. PSAT1 represents a new interesting target for CRC therapy. It may be implicated in altered serine metabolism and schizophrenia spectrum conditions. (PMID: 18221502, 20955740)

Storage

Storage:
Store at -20°C. Stable for one year after shipment.
Storage Buffer:
PBS with 0.02% sodium azide and 50% glycerol pH 7.3.
Aliquoting is unnecessary for -20°C storage

*** 20ul sizes contain 0.1% BSA

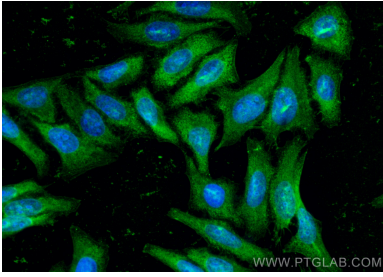
For technical support and original validation data for this product please contact:

T: 1 (888) 4PTGLAB (1-888-478-4522) (toll free in USA), or 1(312) 455-8498 (outside USA)

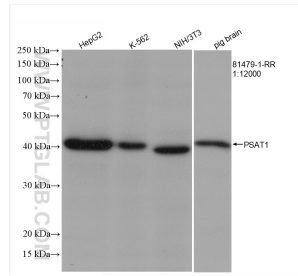
E: proteintech@ptglab.com
W: ptglab.com

This product is exclusively available under Proteintech Group brand and is not available to purchase from any other manufacturer.

Selected Validation Data



Immunofluorescent analysis of (-20°C Ethanol) fixed HepG2 cells using PSAT1 antibody (81479-1-RR, Clone: 1O22) at dilution of 1:400 and CoraLite®488-Conjugated AffiniPure Goat Anti-Rabbit IgG(H+L).



Various lysates were subjected to SDS PAGE followed by western blot with 81479-1-RR (PSAT1 antibody) at dilution of 1:12000 incubated at room temperature for 1.5 hours.