

For Research Use Only

Caspase 1 Recombinant antibody

Catalog Number: 81482-1-RR **10 Publications**



Basic Information

Catalog Number: 81482-1-RR	GenBank Accession Number: BC062327	Purification Method: Protein A purification
Size: 100ul , Concentration: 1000 µg/ml by Nanodrop;	GeneID (NCBI): 834	CloneNo.: 1018
Source: Rabbit	Full Name: caspase 1, apoptosis-related cysteine peptidase (interleukin 1, beta, convertase)	Recommended Dilutions: WB 1:5000-1:50000
Isotype: IgG	Calculated MW: 404 aa, 45 kDa	
Immunogen Catalog Number: AG11143	Observed MW: 30 kDa, 35 kDa, 43-45 kDa	

Applications

Tested Applications: WB, ELISA	Positive Controls: WB : Raji cells, THP-1 cells, U-937 cells
Cited Applications: IF, WB	
Species Specificity: Human	
Cited Species: human, rat, mouse	

Background Information

CASP1(caspase-1) is also named as IL1BC, IL1BCE and belongs to the peptidase C14A family. It is a cysteine protease that regulates inflammatory processes through its capacity to process and activate the interleukin-1-beta (IL1B), IL18, and IL33 precursor proteins. The active caspase-1 can increase cellular membrane permeability and intracellular calcium levels, which facilitates lysosome exocytosis and release of host antimicrobial factors and microbial products (PMID:21804020). It has 5 isoforms produced by alternative splicing. 81482-1-RR can recognize the splicing isoforms of caspase 1.

Notable Publications

Author	Pubmed ID	Journal	Application
Jingfei Zhang	36290717	Antioxidants (Basel)	WB
Yuntao Liu	38147126	Inflamm Res	WB
Minghao Luo	38076153	Heliyon	WB

Storage

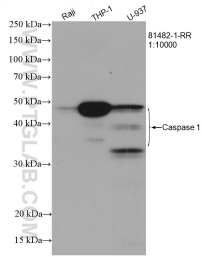
Storage:
Store at -20°C. Stable for one year after shipment.
Storage Buffer:
PBS with 0.02% sodium azide and 50% glycerol pH 7.3.
Aliquoting is unnecessary for -20°C storage

*** 20ul sizes contain 0.1% BSA

For technical support and original validation data for this product please contact:
T: 1 (888) 4PTGLAB (1-888-478-4522) (toll free in USA), or 1(312) 455-8498 (outside USA)
E: proteintech@ptglab.com
W: ptglab.com

This product is exclusively available under Proteintech Group brand and is not available to purchase from any other manufacturer.

Selected Validation Data



Various lysates were subjected to SDS PAGE followed by western blot with 81482-1-RR (Caspase 1 antibody) at dilution of 1:10000 incubated at room temperature for 1.5 hours.