

For Research Use Only

MMP2 Recombinant antibody, PBS Only

Catalog Number: 81515-5-PBS



Basic Information

Catalog Number:

81515-5-PBS

Size:

100ug, Concentration: 1 mg/ml by Nanodrop;

Source:

Rabbit

Isotype:

IgG

Immunogen Catalog Number:

EG1650

GenBank Accession Number:

BC002576

GeneID (NCBI):

4313

UNIPROT ID:

P08253

Full Name:

matrix metalloproteinase 2 (gelatinase A, 72kDa gelatinase, 72kDa type IV collagenase)

Calculated MW:

72 kDa

Observed MW:

62-72 kDa

Purification Method:

Protein A purification

CloneNo.:

250316G1

Applications

Tested Applications:

WB, Indirect ELISA

Species Specificity:

human

Background Information

MMP2, also named as CLG4A, Gelatinase Am, TBE-1 and PEX, belongs to the peptidase M10A family. It is ubiquitous metalloproteinase that is involved in diverse functions such as remodeling of the vasculature, angiogenesis, tissue repair, tumor invasion, inflammation, and atherosclerotic plaque rupture. MMP2 contributes to myocardial oxidative stress by regulating the activity of GSK3beta. It cleaves GSK3beta in vitro. MMP2 can be cleaved into PEX chain (~60kd). Western blot analysis showed that the 72 kDa and 62/65 kDa proteinase activities were pro-MMP2 and the active enzyme, respectively (PMID:11112697, PMID: 30867536).

Storage

Storage:

Store at -80°C.

Storage Buffer:

PBS only, pH7.3

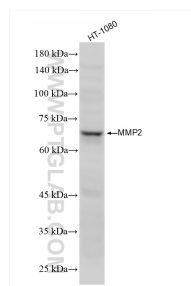
For technical support and original validation data for this product please contact:

T: 1 (888) 4PTGLAB (1-888-478-4522) (toll free in USA), or 1(312) 455-8498 (outside USA)

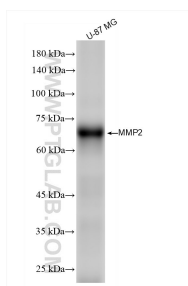
E: proteintech@ptglab.com
W: ptglab.com

This product is exclusively available under Proteintech Group brand and is not available to purchase from any other manufacturer.

Selected Validation Data



HT-1080 cells were subjected to SDS PAGE followed by western blot with 81515-5-RR (MMP2 antibody) at dilution of 1:5000 incubated at room temperature for 1.5 hours. This data was developed using the same antibody clone with 81515-5-PBS in a different storage buffer formulation.



U-87 MG cells were subjected to SDS PAGE followed by western blot with 81515-5-RR (MMP2 antibody) at dilution of 1:5000 incubated at room temperature for 1.5 hours. This data was developed using the same antibody clone with 81515-5-PBS in a different storage buffer formulation.