

For Research Use Only

MMP2 Recombinant antibody

Catalog Number: 81515-5-RR



Basic Information

Catalog Number: 81515-5-RR	GenBank Accession Number: BC002576	Purification Method: Protein A purification
Size: 100ul , Concentration: 1000 µg/ml by Nanodrop;	GeneID (NCBI): 4313	CloneNo.: 250316G1
Source: Rabbit	UNIPROT ID: P08253	Recommended Dilutions: WB: 1:2000-1:10000
Isotype: IgG	Full Name: matrix metalloproteinase 2 (gelatinase A, 72kDa gelatinase, 72kDa type IV collagenase)	
Immunogen Catalog Number: EG1650	Calculated MW: 72 kDa	
	Observed MW: 62-72 kDa	

Applications

Tested Applications: WB, ELISA	Positive Controls: WB : U-87 MG cells, HT-1080 cells
Species Specificity: human	

Background Information

MMP2, also named as CLG4A, Gelatinase Am, TBE-1 and PEX, belongs to the peptidase M10A family. It is ubiquitous metalloproteinase that is involved in diverse functions such as remodeling of the vasculature, angiogenesis, tissue repair, tumor invasion, inflammation, and atherosclerotic plaque rupture. MMP2 contributes to myocardial oxidative stress by regulating the activity of GSK3beta. It cleaves GSK3beta in vitro. MMP2 can be cleaved into PEX chain (~60kd). Western blot analysis showed that the 72 kDa and 62/65 kDa proteinase activities were pro-MMP2 and the active enzyme, respectively (PMID:11112697, PMID: 30867536).

Storage

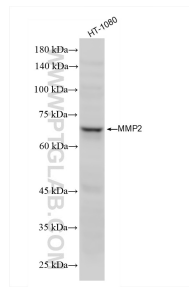
Storage:
Store at -20°C. Stable for one year after shipment.
Storage Buffer:
PBS with 0.02% sodium azide and 50% glycerol, pH7.3
Aliquoting is unnecessary for -20°C storage

*** 20ul sizes contain 0.1% BSA

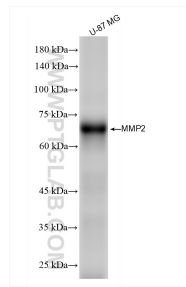
For technical support and original validation data for this product please contact:
T: 1 (888) 4PTGLAB (1-888-478-4522) (toll free in USA), or 1(312) 455-8498 (outside USA)
E: proteintech@ptglab.com
W: ptglab.com

This product is exclusively available under Proteintech Group brand and is not available to purchase from any other manufacturer.

Selected Validation Data



HT-1080 cells were subjected to SDS PAGE followed by western blot with 81515-5-RR (MMP2 antibody) at dilution of 1:5000 incubated at room temperature for 1.5 hours.



U-87 MG cells were subjected to SDS PAGE followed by western blot with 81515-5-RR (MMP2 antibody) at dilution of 1:5000 incubated at room temperature for 1.5 hours.