

For Research Use Only

CD206 Recombinant antibody, PBS Only

Catalog Number: 81525-1-PBS



Basic Information

Catalog Number: 81525-1-PBS	GenBank Accession Number: NM_002438	Purification Method: Protein A purification
Size: 100ug , Concentration: 1000 µg/ml by 4360 Nanodrop;	GeneID (NCBI): 4360	CloneNo.: 1G15
Source: Rabbit	UNIPROT ID: P22897	
Isotype: IgG	Full Name: mannose receptor, C type 1	
	Calculated MW: 166 kDa	
	Observed MW: 170 kDa	

Applications

Tested Applications:
WB, IHC, IF-P, Indirect ELISA

Species Specificity:
human, rat, pig

Background Information

CD206, also named as MMR, CLEC13D and MRC1, is a type I membrane receptor that mediates the endocytosis of glycoproteins by macrophages. CD206 has been shown to bind high-mannose structures on the surface of potentially pathogenic viruses, bacteria, and fungi so that they can be neutralized by phagocytic engulfment. CD206 is a 170 kDa transmembrane protein which contains 5 domains: an amino-terminal cysteine-rich region, a fibronectin type II repeat, a series of eight tandem lectin-like carbohydrate recognition domains (responsible for the recognition of mannose and fucose), a transmembrane domain, and an intracellular carboxy-terminal tail. It is expressed on most tissue macrophages, in vitro derived dendritic cells, lymphatic and sinusoidal endothelia.

Storage

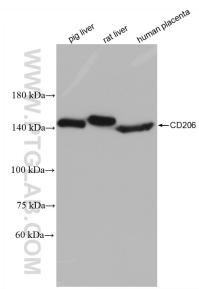
Storage:
Store at -80°C.

Storage Buffer:
PBS Only

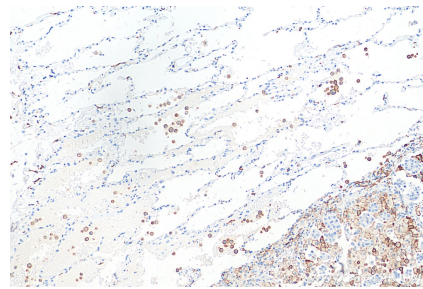
For technical support and original validation data for this product please contact:
T: 1 (888) 4PTGLAB (1-888-478-4522) (toll free in USA), or 1(312) 455-8498 (outside USA)
E: proteintech@ptglab.com
W: ptglab.com

This product is exclusively available under Proteintech Group brand and is not available to purchase from any other manufacturer.

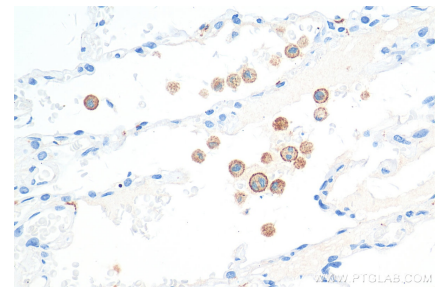
Selected Validation Data



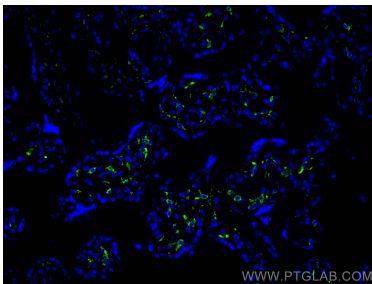
Various lysates were subjected to SDS PAGE followed by western blot with 81525-1-RR (CD206 antibody) at dilution of 1:10000 incubated at room temperature for 1.5 hours. This data was developed using the same antibody clone with 81525-1-PBS in a different storage buffer formulation.



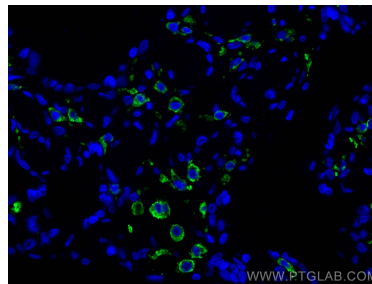
Immunohistochemical analysis of paraffin-embedded human lung cancer tissue slide using 81525-1-RR (CD206 antibody) at dilution of 1:2000 (under 10x lens). Heat mediated antigen retrieval with Tris-EDTA buffer (pH 9.0). This data was developed using the same antibody clone with 81525-1-PBS in a different storage buffer formulation.



Immunohistochemical analysis of paraffin-embedded human lung cancer tissue slide using 81525-1-RR (CD206 antibody) at dilution of 1:2000 (under 40x lens). Heat mediated antigen retrieval with Tris-EDTA buffer (pH 9.0). This data was developed using the same antibody clone with 81525-1-PBS in a different storage buffer formulation.



Immunofluorescent analysis of (4% PFA) fixed paraffin-embedded human placenta tissue using CD206 antibody (81525-1-RR, Clone: 1G15) at dilution of 1:200 and CoraLite® 488-Conjugated AffiniPure Goat Anti-Rabbit IgG(H+L) (SA00013-2). Heat mediated antigen retrieval with Tris-EDTA buffer (pH 9.0). This data was developed using the same antibody clone with 81525-1-PBS in a different storage buffer formulation.



Immunofluorescent analysis of (4% PFA) fixed paraffin-embedded human placenta tissue using CD206 antibody (81525-1-RR, Clone: 1G15) at dilution of 1:200 and CoraLite® 488-Conjugated AffiniPure Goat Anti-Rabbit IgG(H+L) (SA00013-2). Heat mediated antigen retrieval with Tris-EDTA buffer (pH 9.0). This data was developed using the same antibody clone with 81525-1-PBS in a different storage buffer formulation.