

For Research Use Only

# CD206 Recombinant antibody, PBS Only

Catalog Number: 81525-2-PBS



## Basic Information

<b>Catalog Number:</b> 81525-2-PBS	<b>GenBank Accession Number:</b> NM_002438.4	<b>Purification Method:</b> Protein A purification
<b>Size:</b> 100ug , Concentration: 1 mg/ml by Nanodrop;	<b>GeneID (NCBI):</b> 4360	<b>CloneNo.:</b> 250381H6
<b>Source:</b> Rabbit	<b>UNIPROT ID:</b> P22897-1	
<b>Isotype:</b> IgG	<b>Full Name:</b> mannose receptor, C type 1	
<b>Immunogen Catalog Number:</b> EG2428	<b>Calculated MW:</b> 166 kDa	
	<b>Observed MW:</b> 210 kDa	

## Applications

**Tested Applications:**  
WB, Indirect ELISA

**Species Specificity:**  
human, mouse, rat

## Background Information

CD206, also named as MMR, CLEC13D and MRC1, is a type I membrane receptor that mediates the endocytosis of glycoproteins by macrophages. CD206 has been shown to bind high-mannose structures on the surface of potentially pathogenic viruses, bacteria, and fungi so that they can be neutralized by phagocytic engulfment. CD206 is a transmembrane glycoprotein which contains 5 domains: an amino-terminal cysteine-rich region, a fibronectin type II repeat, a series of eight tandem lectin-like carbohydrate recognition domains (responsible for the recognition of mannose and fucose), a transmembrane domain, and an intracellular carboxy-terminal tail. It is expressed on most tissue macrophages, in vitro derived dendritic cells, lymphatic and sinusoidal endothelial cells.

## Storage

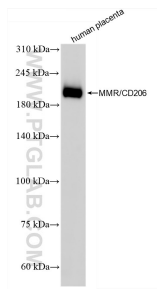
**Storage:**  
Store at -80°C.

**Storage Buffer:**  
PBS only, pH7.3

For technical support and original validation data for this product please contact:  
T: 1 (888) 4PTGLAB (1-888-478-4522) (toll free in USA), or 1(312) 455-8498 (outside USA)  
E: [proteintech@ptglab.com](mailto:proteintech@ptglab.com)  
W: [ptglab.com](http://ptglab.com)

This product is exclusively available under Proteintech Group brand and is not available to purchase from any other manufacturer.

## Selected Validation Data



human placenta tissue was subjected to SDS PAGE followed by western blot with 81525-2-RR (MMR/CD206 antibody) at dilution of 1:2000 incubated at room temperature for 1.5 hours. This data was developed using the same antibody clone with 81525-2-PBS in a different storage buffer formulation.