

For Research Use Only

CD206 Recombinant antibody

Catalog Number: 81525-2-RR



Basic Information

Catalog Number: 81525-2-RR	GenBank Accession Number: NM_002438.4	Purification Method: Protein A purification
Size: 100ul , Concentration: 1000 µg/ml by Nanodrop;	GeneID (NCBI): 4360	CloneNo.: 250381H6
Source: Rabbit	UNIPROT ID: P22897-1	Recommended Dilutions: WB 1:1000-1:4000
Isotype: IgG	Full Name: mannose receptor, C type 1	
Immunogen Catalog Number: EG2428	Calculated MW: 166 kDa	
	Observed MW: 210 kDa	

Applications

Tested Applications: WB, ELISA	Positive Controls:
Species Specificity: human, mouse, rat	WB : human placenta tissue, mouse liver tissue, rat liver tissue

Background Information

CD206, also named as MMR, CLEC13D and MRC1, is a type I membrane receptor that mediates the endocytosis of glycoproteins by macrophages. CD206 has been shown to bind high-mannose structures on the surface of potentially pathogenic viruses, bacteria, and fungi so that they can be neutralized by phagocytic engulfment. CD206 is a transmembrane glycoprotein which contains 5 domains: an amino-terminal cysteine-rich region, a fibronectin type II repeat, a series of eight tandem lectin-like carbohydrate recognition domains (responsible for the recognition of mannose and fucose), a transmembrane domain, and an intracellular carboxy-terminal tail. It is expressed on most tissue macrophages, in vitro derived dendritic cells, lymphatic and sinusoidal endothelial cells.

Storage

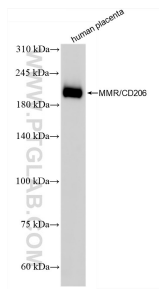
Storage:
Store at -20°C. Stable for one year after shipment.
Storage Buffer:
PBS with 0.02% sodium azide and 50% glycerol, pH7.3
Aliquoting is unnecessary for -20°C storage

*** 20ul sizes contain 0.1%BSA

For technical support and original validation data for this product please contact:
T: 1 (888) 4PTGLAB (1-888-478-4522) (toll free in USA), or 1(312) 455-8498 (outside USA)
E: proteintech@ptglab.com
W: ptglab.com

This product is exclusively available under Proteintech Group brand and is not available to purchase from any other manufacturer.

Selected Validation Data



human placenta tissue was subjected to SDS PAGE followed by western blot with 81525-2-RR (MMR/CD206 antibody) at dilution of 1:2000 incubated at room temperature for 1.5 hours.