

For Research Use Only

DRP1 (C-terminal) Recombinant antibody, PBS Only

Catalog Number: 81561-1-PBS

Featured Product



Basic Information

Catalog Number:

81561-1-PBS

Size:

100ug, Concentration: 1mg/ml by Nanodrop;

Source:

Rabbit

Isotype:

IgG

Immunogen Catalog Number:

AG3644

GenBank Accession Number:

BC024590

GeneID (NCBI):

10059

UNIPROT ID:

O00429

Full Name:

dynamin 1-like

Calculated MW:

736 aa, 82 kDa

Observed MW:

70-80 kDa

Purification Method:

Protein A purification

CloneNo.:

2A19

Applications

Tested Applications:

WB, IHC, IF/ICC, FC (Intra), Indirect ELISA

Species Specificity:

human, mouse, rat

Background Information

DNM1L(Dynamin-1-like protein), also known as dynamin-related protein 1 (DRP1), belongs to the dynamin family of large GTPases that mediate membrane remodeling during a variety of cellular processes. DNM1L has an important role in the division of growing mitochondria and peroxisomes and also mediates outer mitochondrial membrane fission in mammalian cells. DNM1L is ubiquitously expressed with abundant expression in skeletal muscle, heart, kidney and brain. Variable isoforms of DNM1L have been reported in a tissue-specific manner due to the alternative splicing.

Storage

Storage:

Store at -80°C.

Storage Buffer:

PBS Only

For technical support and original validation data for this product please contact:

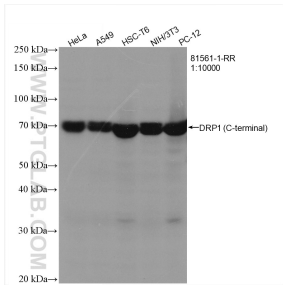
T: 1 (888) 4PTGLAB (1-888-478-4522) (toll free in USA), or 1(312) 455-8498 (outside USA)

E: proteintech@ptglab.com

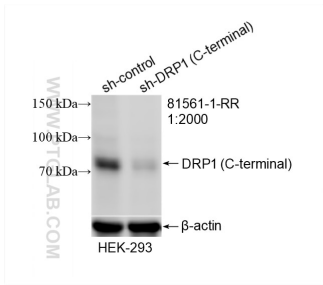
W: ptglab.com

This product is exclusively available under Proteintech Group brand and is not available to purchase from any other manufacturer.

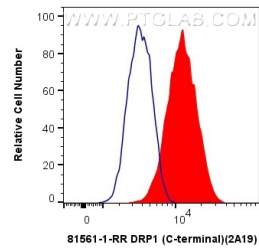
Selected Validation Data



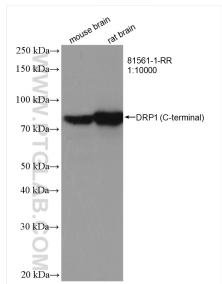
Various lysates were subjected to SDS PAGE followed by western blot with 81561-1-RR (DRP1 (C-terminal) antibody) at dilution of 1:10000 incubated at room temperature for 1.5 hours. This data was developed using the same antibody clone with 81561-1-PBS in a different storage buffer formulation.



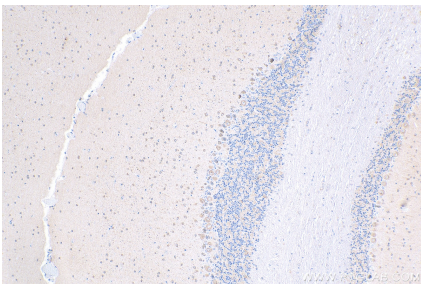
WB result of DRP1 (C-terminal) antibody (81561-1-RR; 1:2000; incubated at room temperature for 1.5 hours) with sh-Control and sh-DRP1 (C-terminal) transfected HEK-293 cells. This data was developed using the same antibody clone with 81561-1-PBS in a different storage buffer formulation.



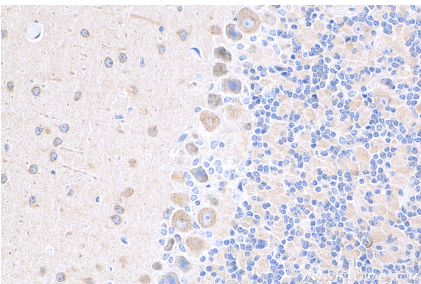
1X10⁶ HeLa cells were intracellularly stained with 0.4 ug Anti-Human DRP1 (C-terminal) (81561-1-RR, Clone:2A19) and CoraLite®488-Conjugated AffiniPure Goat Anti-Rabbit IgG(H+L) at dilution 1:1000 (red), or 0.4 ug Isotype Control. Cells were fixed with 4% PFA and permeabilized with Flow Cytometry Perm Buffer (PF00011-C). This data was developed using the same antibody clone with 81561-1-PBS in a different storage buffer formulation.



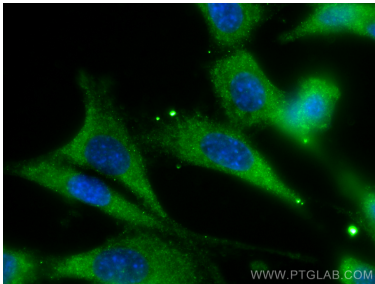
Various lysates were subjected to SDS PAGE followed by western blot with 81561-1-RR (DRP1 (C-terminal) antibody) at dilution of 1:10000 incubated at room temperature for 1.5 hours. This data was developed using the same antibody clone with 81561-1-PBS in a different storage buffer formulation.



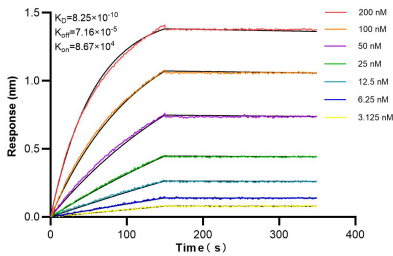
Immunohistochemical analysis of paraffin-embedded mouse cerebellum tissue slide using 81561-1-RR (DRP1 (C-terminal) antibody) at dilution of 1:1000 (under 10x lens). Heat mediated antigen retrieval with Tris-EDTA buffer (pH 9.0). This data was developed using the same antibody clone with 81561-1-PBS in a different storage buffer formulation.



Immunohistochemical analysis of paraffin-embedded mouse cerebellum tissue slide using 81561-1-RR (DRP1 (C-terminal) antibody) at dilution of 1:1000 (under 40x lens). Heat mediated antigen retrieval with Tris-EDTA buffer (pH 9.0). This data was developed using the same antibody clone with 81561-1-PBS in a different storage buffer formulation.



Immunofluorescent analysis of (-20°C Methanol) fixed NIH/3T3 cells using DRP1 (C-terminal) antibody (81561-1-RR, Clone: 2A19) at dilution of 1:400 and CoraLite®488-Conjugated AffiniPure Goat Anti-Rabbit IgG(H+L). This data was developed using the same antibody clone with 81561-1-PBS in a different storage buffer formulation.



Biolayer interferometry (BLI) kinetic assays of 81561-1-RR against Human DRP1 (C-terminal) were performed. The affinity constant is 0.825 nM.