

For Research Use Only

DRP1 (C-terminal) Recombinant antibody



Catalog Number: 81561-1-RR

Basic Information

Catalog Number: 81561-1-RR	GenBank Accession Number: BC024590	Purification Method: Protein A purification
Size: 100ul , Concentration: 1000 µg/ml by Nanodrop;	GeneID (NCBI): 10059	CloneNo.: 2A19
Source: Rabbit	Full Name: dynamin 1-like	Recommended Dilutions: WB 1:5000-1:50000 IHC 1:500-1:2000 IF 1:200-1:800
Isotype: IgG	Calculated MW: 736 aa, 82 kDa	
Immunogen Catalog Number: AG3644	Observed MW: 70-80 kDa	

Applications

Tested Applications:
FC, IF, IHC, WB, ELISA

Species Specificity:
Human, mouse, rat

Note-IHC: suggested antigen retrieval with TE buffer pH 9.0; (*) Alternatively, antigen retrieval may be performed with citrate buffer pH 6.0

Positive Controls:

WB : HeLa cells, mouse brain tissue, A549 cells, HCT 116 cells, NIH/3T3 cells, PC-12 cells, rat brain tissue

IHC : mouse cerebellum tissue,

IF : NIH/3T3 cells,

Background Information

DNM1L(Dynamin-1-like protein) , also known as dynamin-related protein 1 (DRP1), belongs to the dynamin family of large GTPases that mediate membrane remodeling during a variety of cellular processes. DNM1L has an important role in the division of growing mitochondria and peroxisomes and also mediates outer mitochondrial membrane fission in mammalian cells. DNM1L is ubiquitously expressed with abundant expression in skeletal muscle, heart, kidney and brain. Variable isoforms of DNM1L have been reported in a tissue-specific manner due to the alternative splicing.

Storage

Storage:

Store at -20°C. Stable for one year after shipment.

Storage Buffer:

PBS with 0.02% sodium azide and 50% glycerol pH 7.3.

Aliquoting is unnecessary for -20°C storage

***** 20ul sizes contain 0.1% BSA**

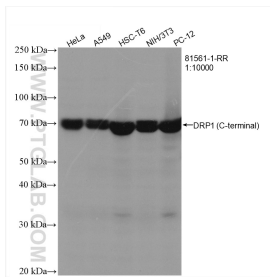
For technical support and original validation data for this product please contact:

T: 1 (888) 4PTGLAB (1-888-478-4522) (toll free in USA), or 1(312) 455-8498 (outside USA)

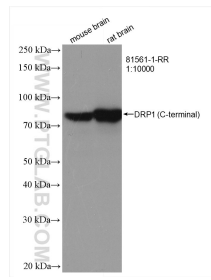
E: proteintech@ptglab.com
W: ptglab.com

This product is exclusively available under Proteintech Group brand and is not available to purchase from any other manufacturer.

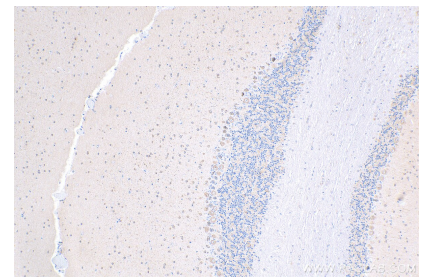
Selected Validation Data



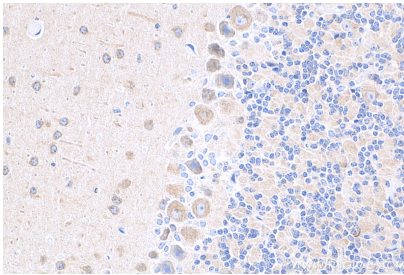
Various lysates were subjected to SDS PAGE followed by western blot with 81561-1-RR (DRP1 (C-terminal) antibody) at dilution of 1:10000 incubated at room temperature for 1.5 hours.



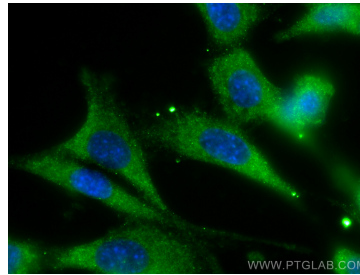
Various lysates were subjected to SDS PAGE followed by western blot with 81561-1-RR (DRP1 (C-terminal) antibody) at dilution of 1:10000 incubated at room temperature for 1.5 hours.



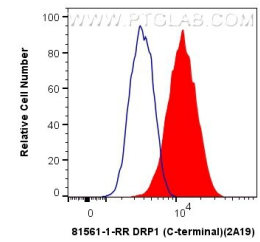
Immunohistochemical analysis of paraffin-embedded mouse cerebellum tissue slide using 81561-1-RR (DRP1 (C-terminal) antibody) at dilution of 1:1000 (under 10x lens). Heat mediated antigen retrieval with Tris-EDTA buffer (pH 9.0).



Immunohistochemical analysis of paraffin-embedded mouse cerebellum tissue slide using 81561-1-RR (DRP1 (C-terminal) antibody) at dilution of 1:1000 (under 40x lens). Heat mediated antigen retrieval with Tris-EDTA buffer (pH 9.0).



Immunofluorescent analysis of (-20°C Methanol) fixed NIH/3T3 cells using DRP1 (C-terminal) antibody (81561-1-RR, Clone: 2A19) at dilution of 1:400 and CoraLite®488-Conjugated AffiniPure Goat Anti-Rabbit IgG(H+L).



1X10⁶ HeLa cells were intracellularly stained with 0.4 ug Anti-Human DRP1 (C-terminal) (81561-1-RR, Clone:2A19) and CoraLite®488-Conjugated AffiniPure Goat Anti-Rabbit IgG(H+L) at dilution 1:1000 (red), or 0.4 ug Isotype Control. Cells were fixed with 4% PFA and permeabilized with Flow Cytometry Perm Buffer (PF00011-C).