

For Research Use Only

FKBP10/FKBP65 Recombinant antibody, PBS Only

Catalog Number: 81567-1-PBS

Featured Product



Basic Information

Catalog Number:

81567-1-PBS

Size:

100ug, Concentration: 1 mg/ml by
Nanodrop;

Source:

Rabbit

Isotype:

IgG

Immunogen Catalog Number:

AG2814

GenBank Accession Number:

BC016467

GeneID (NCBI):

60681

UNIPROT ID:

Q96AY3

Full Name:

FK506 binding protein 10, 65 kDa

Calculated MW:

582 aa, 64 kDa

Observed MW:

65-70 kDa

Purification Method:

Protein A purification

CloneNo.:

S94

Applications

Tested Applications:

WB, IHC, Indirect ELISA

Species Specificity:

human

Background Information

FKBP10, also known as FKBP65, is a 65 kDa FK506 binding protein that is a member of the FKBP-type peptidyl-prolyl cis/trans isomerase family. This protein localizes to the endoplasmic reticulum and acts as a molecular chaperone and binding partner of type I collagen. FKBP65 is expressed in developing tissues and re-expressed in adult tissues following injury. As documented, FKBP10 has been detected to play important roles in the initiation and progression of cancers.

Storage

Storage:

Store at -80°C.

Storage Buffer:

PBS Only

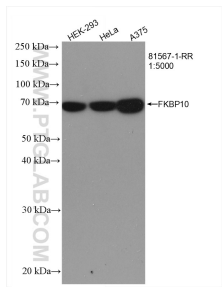
For technical support and original validation data for this product please contact:

T: 1 (888) 4PTGLAB (1-888-478-4522) (toll free
in USA), or 1(312) 455-8498 (outside USA)

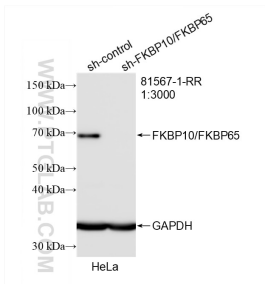
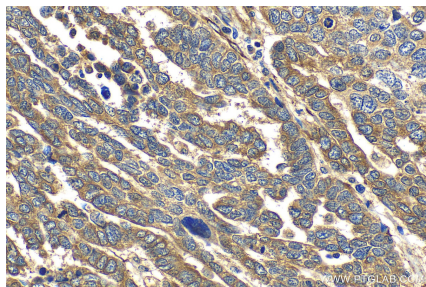
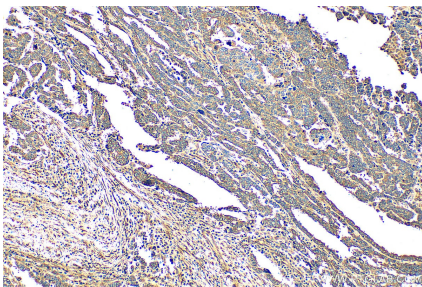
E: proteintech@ptglab.com
W: ptglab.com

This product is exclusively available under Proteintech Group brand and is not available to purchase from any other manufacturer.

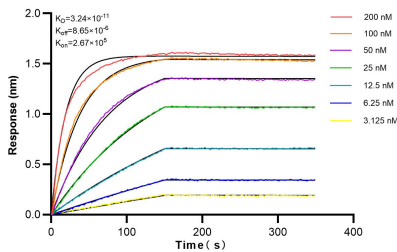
Selected Validation Data



Various lysates were subjected to SDS PAGE followed by western blot with 81567-1-RR (FKBP10/FKBP65 antibody) at dilution of 1:5000 incubated at room temperature for 1.5 hours. This data was developed using the same antibody clone with 81567-1-PBS in a different storage buffer formulation.



WB result of FKBP10/FKBP65 antibody (81567-1-RR; 1:3000; incubated at room temperature for 1.5 hours) with sh-Control and sh-FKBP10/FKBP65 transfected HeLa cells. This data was developed using the same antibody clone with 81567-1-PBS in a different storage buffer formulation.



Biolayer interferometry (BLI) kinetic assays of 81567-1-RR against Human FKBP10/FKBP65 were performed. The affinity constant is 32.4 pM.