

For Research Use Only

# MYL7 Recombinant antibody, PBS Only



Catalog Number: 81570-1-PBS

## Basic Information

<b>Catalog Number:</b> 81570-1-PBS	<b>GenBank Accession Number:</b> BC027915	<b>Purification Method:</b> Protein A purification
<b>Size:</b> 100ug , Concentration: 1 mg/ml by Nanodrop;	<b>GeneID (NCBI):</b> 58498	<b>CloneNo.:</b> 2C5
<b>Source:</b> Rabbit	<b>UNIPROT ID:</b> Q01449	
<b>Isotype:</b> IgG	<b>Full Name:</b> myosin, light chain 7, regulatory	
<b>Immunogen Catalog Number:</b> AG11058	<b>Calculated MW:</b> 175 aa, 19 kDa	
	<b>Observed MW:</b> 19 kDa	

## Applications

**Tested Applications:**  
WB, IHC, Indirect ELISA

**Species Specificity:**  
mouse, rat, human

## Background Information

MYL7, also known as myosin light chain 2a (MLC2a), is essential for heart development. The expression of MYL7 in heart is predominatantly restricted to the atrium. So its expression has been considered as useful marker for atrial cardiomyocytes.

## Storage

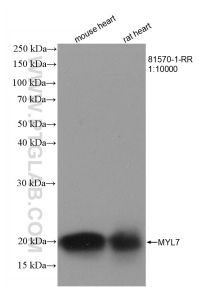
**Storage:**  
Store at -80°C.

**Storage Buffer:**  
PBS Only

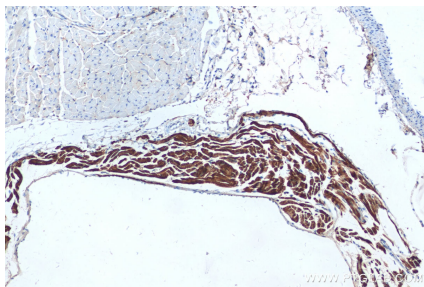
For technical support and original validation data for this product please contact:  
T: 1 (888) 4PTGLAB (1-888-478-4522) (toll free in USA), or 1(312) 455-8498 (outside USA)  
E: [proteintech@ptglab.com](mailto:proteintech@ptglab.com)  
W: [ptglab.com](http://ptglab.com)

This product is exclusively available under Proteintech Group brand and is not available to purchase from any other manufacturer.

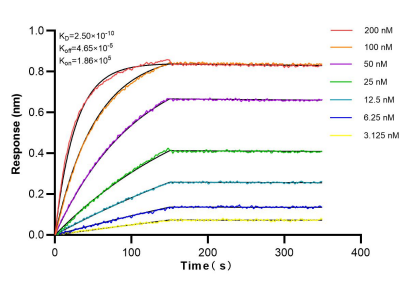
## Selected Validation Data



Various lysates were subjected to SDS PAGE followed by western blot with 81570-1-RR (MYL7 antibody) at dilution of 1:10000 incubated at room temperature for 1.5 hours. This data was developed using the same antibody clone with 81570-1-PBS in a different storage buffer formulation.



Immunohistochemical analysis of paraffin-embedded mouse heart tissue slide using 81570-1-RR (MYL7 antibody) at dilution of 1:1000 (under 10x lens). Heat mediated antigen retrieval with Tris-EDTA buffer (pH 9.0). This data was developed using the same antibody clone with 81570-1-PBS in a different storage buffer formulation.



Biolayer interferometry (BLI) kinetic assays of 81570-1-RR against Human MYL7 were performed. The affinity constant is 0.25 nM.