

SNAI1 Recombinant antibody, PBS Only (Detector)

Catalog Number: 81584-3-PBS

Basic Information

Catalog Number: 81584-3-PBS	GenBank Accession Number: BC012910	Purification Method: Protein A purification
Size: 100ug , Concentration: 1 mg/ml by Nanodrop;	GeneID (NCBI): 6615	CloneNo.: 240164D2
Source: Rabbit	UNIPROT ID: O95863	
Isotype: IgG	Full Name: snail homolog 1 (Drosophila)	
Immunogen Catalog Number: AG24248	Calculated MW: 264 aa, 29 kDa	

Applications

Tested Applications:
Cytometric bead array, Sandwich ELISA, Indirect ELISA, Sample test

Species Specificity:
human

Product Information

81584-3-PBS targets SNAI1 as part of a matched antibody pair:

MP00343-1: 81584-2-PBS capture and 81584-3-PBS detection (validated in Cytometric bead array)

MP00343-2: 81584-4-PBS capture and 81584-3-PBS detection (validated in Cytometric bead array, Sandwich ELISA)

Unconjugated rabbit recombinant monoclonal antibody in PBS only (BSA and azide free) storage buffer at a concentration of 1 mg/mL, ready for conjugation. Created using Proteintech's proprietary in-house recombinant technology. Recombinant production enables unrivalled batch-to-batch consistency, easy scale-up, and future security of supply.

This conjugation ready format makes antibodies ideal for use in many applications including: ELISAs, multiplex assays requiring matched pairs, mass cytometry, and multiplex imaging applications. Antibody use should be optimized by the end user for each application and assay.

Storage

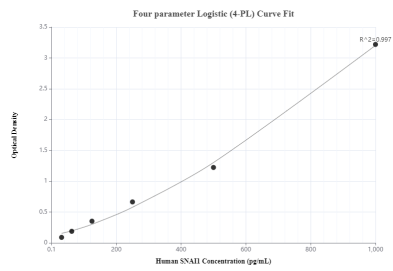
Storage:
Store at -80°C.

Storage Buffer:
PBS Only

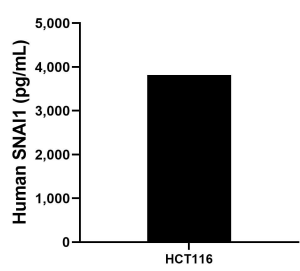
For technical support and original validation data for this product please contact:
T: 1 (888) 4PTGLAB (1-888-478-4522) (toll free in USA), or 1(312) 455-8498 (outside USA)
E: proteintech@ptglab.com
W: ptglab.com

This product is exclusively available under Proteintech Group brand and is not available to purchase from any other manufacturer.

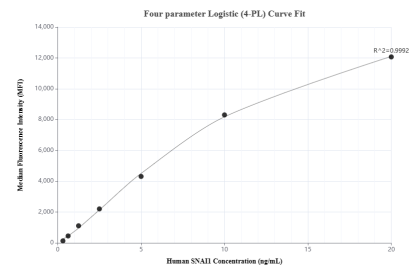
Selected Validation Data



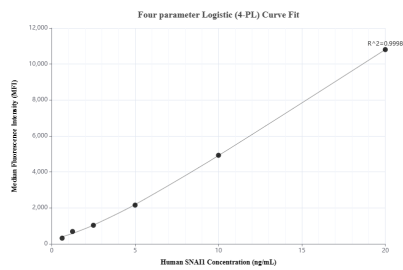
Sandwich ELISA standard curve of MP00343-2, Human SNAI1 Recombinant Matched Antibody Pair - PBS only. 81584-4-PBS was coated to a plate as the capture antibody and incubated with serial dilutions of standard Ag24248. 81584-3-PBS was HRP conjugated as the detection antibody. Range: 31.25-1000 pg/mL



The mean SNAI1 concentration was determined to be 3,819.6 pg/mL in HCT116 cell extract based on a 3.0 mg/mL extract load.



Cytometric bead array standard curve of MP00343-1, SNAI1 Recombinant Matched Antibody Pair, PBS Only. Capture antibody: 81584-2-PBS. Detection antibody: 81584-3-PBS. Standard: Ag24248. Range: 0.313-20 ng/mL



Cytometric bead array standard curve of MP00343-2, SNAI1 Recombinant Matched Antibody Pair, PBS Only. Capture antibody: 81584-4-PBS. Detection antibody: 81584-3-PBS. Standard: Ag24248. Range: 0.625-20 ng/mL