

For Research Use Only

EIF2C2-Specific Recombinant antibody, PBS Only (Detector)

Catalog Number:81707-3-PBS



Basic Information

Catalog Number: 81707-3-PBS	GenBank Accession Number: NM_012154	Purification Method: Protein A purification
Size: 100ug , Concentration: 1 mg/ml by Nanodrop;	GeneID (NCBI): 27161	CloneNo.: 250686E2
Source: Rabbit	UNIPROT ID: Q9UKV8	
Isotype: IgG	Full Name: eukaryotic translation initiation factor 2C, 2	
	Calculated MW: 97 kDa	

Applications

Tested Applications:
Sandwich ELISA, Indirect ELISA, Sample test

Species Specificity:
human

Product Information

81707-3-PBS targets EIF2C2-Specific as part of a matched antibody pair:

MP02445-1: 81707-4-PBS capture and 81707-3-PBS detection (validated in Sandwich ELISA)

Unconjugated rabbit recombinant monoclonal antibody in PBS only (BSA and azide free) storage buffer at a concentration of 1 mg/mL, ready for conjugation. Created using Proteintech's proprietary in-house recombinant technology. Recombinant production enables unrivalled batch-to-batch consistency, easy scale-up, and future security of supply.

This conjugation ready format makes antibodies ideal for use in many applications including: ELISAs, multiplex assays requiring matched pairs, mass cytometry, and multiplex imaging applications. Antibody use should be optimized by the end user for each application and assay.

Storage

Storage:
Store at -80°C.

Storage Buffer:
PBS only, pH7.3

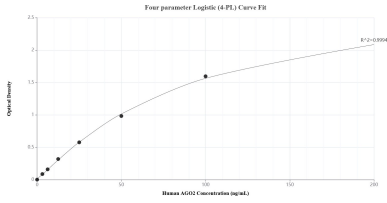
For technical support and original validation data for this product please contact:

T: 1 (888) 4PTGLAB (1-888-478-4522) (toll free
in USA), or 1(312) 455-8498 (outside USA)

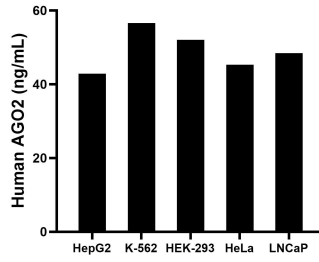
E: proteintech@ptglab.com
W: ptglab.com

This product is exclusively available under Proteintech Group brand and is not available to purchase from any other manufacturer.

Selected Validation Data



Sandwich ELISA standard curve of MPO2445-1, Human AGO2 Recombinant Matched Antibody Pair - PBS only. 81707-4-PBS was coated to a plate as the capture antibody and incubated with serial dilutions of standard SY00436. 81707-3-PBS was HRP conjugated as the detection antibody. Range: 3.13-200 ng/mL.



The mean AGO2 concentration was determined to be 42.85 ng/mL in HepG2 cell extract based on a 1.10 mg/mL extract load, 56.57 ng/mL in K-562 cell extract based on a 1.40 mg/mL extract load, 52.01 ng/mL in HEK-293 cell extract based on a 2.90 mg/mL extract load, 45.27 ng/mL in HeLa cell extract based on a 1.40 mg/mL extract load and 48.44 ng/mL in LNCaP cell extract based on a 1.20 mg/mL extract load.