

For Research Use Only

IBA1 Recombinant antibody, PBS Only

Catalog Number: 81728-1-PBS



Basic Information

Catalog Number: 81728-1-PBS	GenBank Accession Number: BC009474	Purification Method: Protein A purification
Size: 100ug , Concentration: 1mg/ml by Nanodrop;	GeneID (NCBI): 199	CloneNo.: 4D5
Source: Rabbit	ENSEMBL Gene ID: ENSG00000204472	
Isotype: IgG	UNIPROT ID: P55008	
Immunogen Catalog Number: AG1363	Full Name: allograft inflammatory factor 1	
	Calculated MW: 17 kDa	
	Observed MW: 17 kDa	

Applications

Tested Applications:
WB, IHC, IF-P, FC (Intra), Indirect ELISA

Species Specificity:
human, mouse, rat

Background Information

IBA1 is a 143 amino acid cytoplasmic, inflammation response scaffold protein. It is constitutively expressed in monocytes and macrophages and is known to be involved in macrophage activation. It is a marker of activated macrophage. Expression of IBA1 is up-regulated in activated microglia following facial nerve axotomy, ischemia, and several brain diseases, thereby implicating it in the activated phenotypes of microglia.

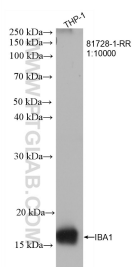
Storage

Storage:
Store at -80°C.
Storage Buffer:
PBS only, pH7.3

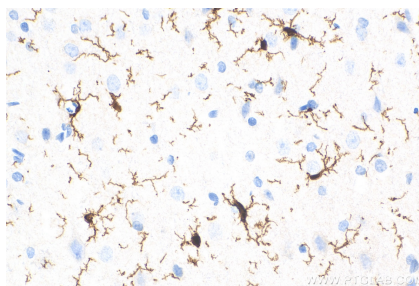
For technical support and original validation data for this product please contact:
T: 1 (888) 4PTGLAB (1-888-478-4522) (toll free in USA), or 1(312) 455-8498 (outside USA)
E: proteintech@ptglab.com
W: ptglab.com

This product is exclusively available under Proteintech Group brand and is not available to purchase from any other manufacturer.

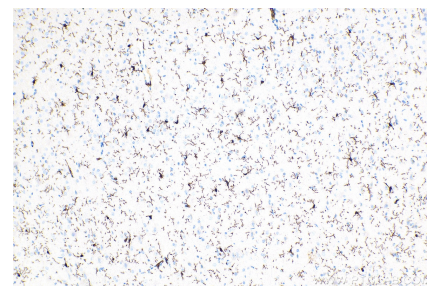
Selected Validation Data



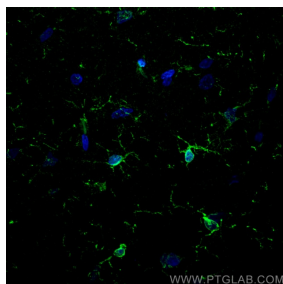
THP-1 cells were subjected to SDS PAGE followed by western blot with 81728-1-RR (IBA1 antibody) at dilution of 1:10000 incubated at room temperature for 1.5 hours. This data was developed using the same antibody clone with 81728-1-PBS in a different storage buffer formulation.



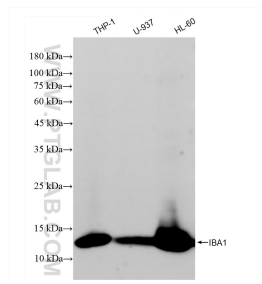
Immunohistochemical analysis of paraffin-embedded rat brain tissue slide using 81728-1-RR (IBA1 antibody) at dilution of 1:1000 (under 40x lens). Heat mediated antigen retrieval with Tris-EDTA buffer (pH 9.0). This data was developed using the same antibody clone with 81728-1-PBS in a different storage buffer formulation.



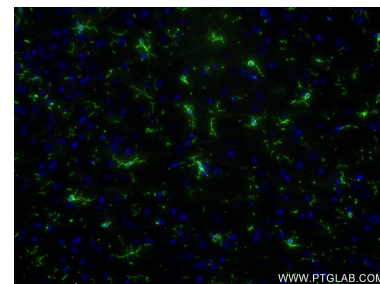
Immunohistochemical analysis of paraffin-embedded rat brain tissue slide using 81728-1-RR (IBA1 antibody) at dilution of 1:1000 (under 10x lens). Heat mediated antigen retrieval with Tris-EDTA buffer (pH 9.0). This data was developed using the same antibody clone with 81728-1-PBS in a different storage buffer formulation.



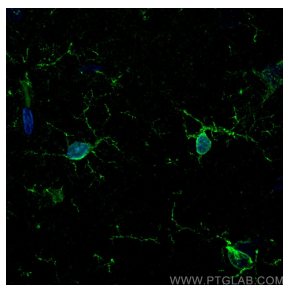
Immunofluorescent analysis of (4% PFA) fixed rat brain tissue using IBA1 antibody (81728-1-RR, Clone: 4D5) at dilution of 1:500 and CoraLite®488-Conjugated AffiniPure Goat Anti-Rabbit IgG(H+L). This data was developed using the same antibody clone with 81728-1-PBS in a different storage buffer formulation.



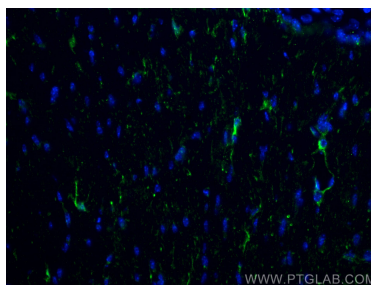
Various lysates were subjected to SDS PAGE followed by western blot with 81728-1-RR (IBA1 antibody) at dilution of 1:10000 incubated at room temperature for 1.5 hours. This data was developed using the same antibody clone with 81728-1-PBS in a different storage buffer formulation.



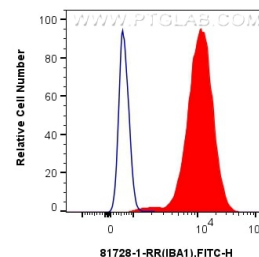
Immunofluorescent analysis of (4% PFA) fixed paraffin-embedded rat brain tissue using IBA1 antibody (81728-1-RR, Clone: 4D5) at dilution of 1:250 and CoraLite®488-Conjugated Goat Anti-Rabbit IgG(H+L) (SA00013-2). Heat mediated antigen retrieval with Tris-EDTA buffer (pH 9.0). This data was developed using the same antibody clone with 81728-1-PBS in a different storage buffer formulation.



Immunofluorescent analysis of (4% PFA) fixed rat brain tissue using IBA1 antibody (81728-1-RR, Clone: 4D5) at dilution of 1:500 and CoraLite®488-Conjugated AffiniPure Goat Anti-Rabbit IgG(H+L). This data was developed using the same antibody clone with 81728-1-PBS in a different storage buffer formulation.



Immunofluorescent analysis of (4% PFA) fixed frozen OCT-embedded mouse brain tissue using IBA1 antibody (81728-1-RR, Clone: 4D5) at dilution of 1:400 and CoraLite®488-Conjugated AffiniPure Goat Anti-Rabbit IgG(H+L) (SA00013-2). This data was developed using the same antibody clone with 81728-1-PBS in a different storage buffer formulation.



1×10^6 THP-1 cells were intracellularly stained with 0.4 ug IBA1 Recombinant antibody (81728-1-RR, Clone:4D5) and CoraLite®488-Conjugated AffiniPure Goat Anti-Rabbit IgG(H+L) (SA00013-2) (red), or 0.4 ug Isotype Control (blue). Cells were fixed with 4% PFA and permeabilized with Flow Cytometry Perm Buffer (PF00011-C). This data was developed using the same antibody clone with 81728-1-PBS in a different storage buffer formulation.