

For Research Use Only

TGFB1 Recombinant antibody, PBS Only (Detector)

Catalog Number: 81746-6-PBS



Basic Information

Catalog Number: 81746-6-PBS	GenBank Accession Number: GeneID (NCBI): 7040	Purification Method: Protein A purification
Size: 100ug, Concentration: 1 mg/ml by Nanodrop;	UNIPROT ID: P01137	CloneNo.: 250119E8
Source: Rabbit	Full Name: transforming growth factor, beta 1	
Isotype: IgG	Calculated MW: 44 kDa	
Immunogen Catalog Number: EG0879		

Applications

Tested Applications:
WB, Sandwich ELISA, Indirect ELISA, Sample test

Species Specificity:
human

Product Information

81746-6-PBS targets TGFB1 as part of a matched antibody pair.

MP02288-2: 81746-7-PBS capture and 81746-6-PBS detection (validated in Sandwich ELISA)

Unconjugated rabbit recombinant monoclonal antibody in PBS only (BSA and azide free) storage buffer at a concentration of 1 mg/mL, ready for conjugation. Created using Proteintech's proprietary in-house recombinant technology. Recombinant production enables unrivalled batch-to-batch consistency, easy scale-up, and future security of supply.

This conjugation ready format makes antibodies ideal for use in many applications including: ELISAs, multiplex assays requiring matched pairs, mass cytometry, and multiplex imaging applications. Antibody use should be optimized by the end user for each application and assay.

Storage

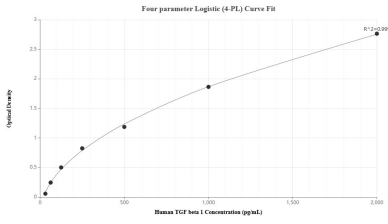
Storage:
Store at -80°C.

Storage Buffer:
PBS only, pH7.3

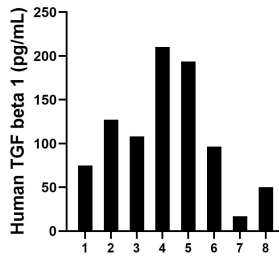
For technical support and original validation data for this product please contact:
T: 1 (888) 4PTGLAB (1-888-478-4522) (toll free in USA), or 1(312) 455-8498 (outside USA)
E: proteintech@ptglab.com
W: ptglab.com

This product is exclusively available under Proteintech Group brand and is not available to purchase from any other manufacturer.

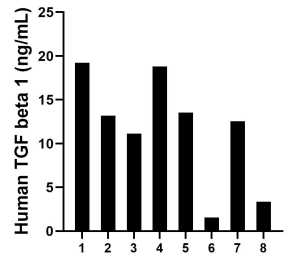
Selected Validation Data



Sandwich ELISA standard curve of MP02288-2, Human TGF beta 1 Recombinant Matched Antibody Pair - PBS only. 81746-7-PBS was coated to a plate as the capture antibody and incubated with serial dilutions of standard Eg0879. 81746-6-PBS was HRP conjugated as the detection antibody. Range: 31.25-2000 pg/mL



Urine of eight individual healthy human donors was measured. The human TGF beta 1 concentration of detected samples was determined to be 109.8 pg/mL with a range of 17.1 - 210.3 pg/mL.



Plasma of eight individual healthy human donors was measured. The human TGF beta 1 concentration of detected samples was determined to be 11.67 ng/mL with a range of 1.56 - 18.79 ng/mL.