

For Research Use Only

BCL6 Recombinant antibody

Catalog Number: 81754-1-RR

Featured Product



Basic Information

Catalog Number:

81754-1-RR

Size:

100ul, Concentration: 1000 ug/ml by Nanodrop;

Source:

Rabbit

Isotype:

IgG

Immunogen Catalog Number:

AG15519

GenBank Accession Number:

BC150184

GeneID (NCBI):

604

UNIPROT ID:

P41182

Full Name:

B-cell CLL/lymphoma 6

Calculated MW:

706 aa, 79 kDa

Observed MW:

79-95 kDa

Purification Method:

Protein A purification

CloneNo.:

3K6

Recommended Dilutions:

WB: 1:5000-1:50000

IP: 0.5-4.0 ug for 1.0-3.0 mg of total protein lysate

IHC: 1:500-1:2000

FC (Intra): 0.40 ug per 10⁶ cells in a 100 µl suspension

Applications

Tested Applications:

WB, IHC, FC (Intra), IP, ELISA

Species Specificity:

human, mouse

Note-IHC: suggested antigen retrieval with TE buffer pH 9.0; (*) Alternatively, antigen retrieval may be performed with citrate buffer pH 6.0

Positive Controls:

WB : Ramos cells, A20 cells, Daudi cells

IP : Ramos cells,

IHC : human tonsillitis tissue,

FC (Intra) : Ramos cells,

Background Information

BCL6, a zinc finger transcription factor, contains an N-terminal BTB/POZ domain and C-terminal zinc finger DNA-binding motifs and represses transcription of a wide range of target proteins and microRNAs. BCL6 protein has been reported as a master regulator of B lymphocyte development and growth, and altered BCL6 protein expression was implicated in pathogenesis of diverse human hematologic malignancies, especially in the diffuse large B cell lymphoma (DLBCL). BCL6 is required for the development of T follicular helper T cells (TFH), a helper T cell subset required for the formation of mature and productive GCs. BCL6 has also been shown to play important regulatory roles in macrophages.

Storage

Storage:

Store at -20°C. Stable for one year after shipment.

Storage Buffer:

PBS with 0.02% sodium azide and 50% glycerol, pH7.3

Aliquoting is unnecessary for -20°C storage

*** 20ul sizes contain 0.1% BSA

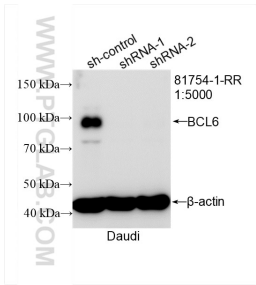
For technical support and original validation data for this product please contact:

T: 1 (888) 4PTGLAB (1-888-478-4522) (toll free in USA), or 1(312) 455-8498 (outside USA)

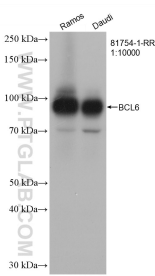
E: proteintech@ptglab.com
W: ptglab.com

This product is exclusively available under Proteintech Group brand and is not available to purchase from any other manufacturer.

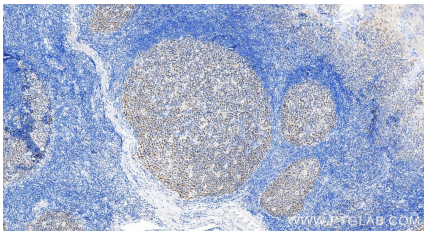
Selected Validation Data



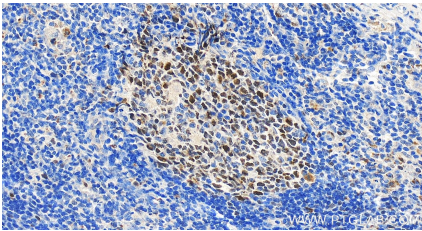
WB result of BCL6 antibody (81754-1-RR; 1:5000; incubated at room temperature for 1.5 hours) with sh-Control and sh-BCL6 transfected Daudi cells.



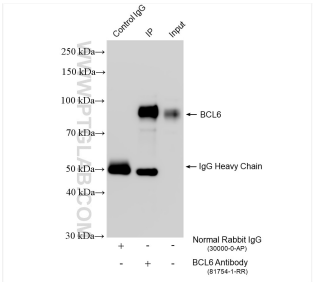
Various lysates were subjected to SDS PAGE followed by western blot with 81754-1-RR (BCL6 antibody) at dilution of 1:10000 incubated at room temperature for 1.5 hours.



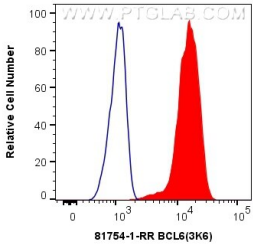
Immunohistochemical analysis of paraffin-embedded human tonsillitis tissue slide using 81754-1-RR (BCL6 antibody) at dilution of 1:1000 (under 10x lens). Heat mediated antigen retrieval with Tris-EDTA buffer (pH 9.0).



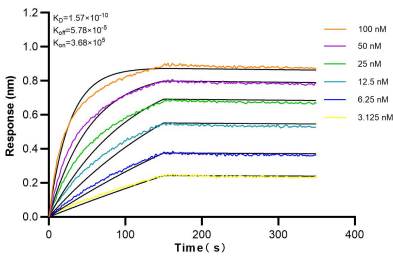
Immunohistochemical analysis of paraffin-embedded human tonsillitis tissue slide using 81754-1-RR (BCL6 antibody) at dilution of 1:1000 (under 40x lens). Heat mediated antigen retrieval with Tris-EDTA buffer (pH 9.0).



IP result of anti-BCL6 (IP:81754-1-RR, 4ug; Detection:81754-1-RR 1:8000) with Ramos cells lysate 1680 ug.



1X10⁶ Ramos cells were intracellularly stained with 0.4 ug Anti-Human BCL6 (81754-1-RR, Clone:3K6) and CoraLite®488-Conjugated AffiniPure Goat Anti-Rabbit IgG(H+L) at dilution 1:1000 (red), or 0.4 ug Isotype Control. Cells were fixed and permeabilized with Transcription Factor Staining Buffer Kit (PF00011).



Biolayer interferometry (BLI) kinetic assays of 81754-1-RR against Human BCL6 were performed. The affinity constant is 0.157 nM.