

For Research Use Only

ATG7 Recombinant antibody

Catalog Number: 81760-1-RR

Featured Product



Basic Information

Catalog Number: 81760-1-RR	GenBank Accession Number: BC000091	Purification Method: Protein A purification
Size: 100ul , Concentration: 500 µg/ml by Nanodrop;	GeneID (NCBI): 10533	CloneNo.: 2M8
Source: Rabbit	Full Name: ATG7 autophagy related 7 homolog (S. cerevisiae)	Recommended Dilutions: WB 1:2000-1:10000 IP 0.5-4.0 ug for IP and 1:1000-1:4000 for WB
Isotype: IgG	Calculated MW: 78 kDa	
Immunogen Catalog Number: AG0142	Observed MW: 68-78 kDa	

Applications

Tested Applications: IP, WB, ELISA	Positive Controls:
Species Specificity: Human	WB : HeLa cells, HepG2 cells, U2OS cells, Jurkat cells IP : HeLa cells,

Background Information

Atg7 is an E1-like enzyme that is specifically involved in autophagosome formation and is essential for autophagy. As an autophagic-related protein it is required for linking to Atg12, Atg5 and Atg8, which are essential for Atg conjugation and autophagosome formation. Atg7 has been reported as an important regulator of autophagy with starvation-induced or chemotherapeutic agent treatment. The high expression level of ATG7 is related to the survival of patients with breast cancer. There are several isoforms of ATG7 protein ranged from 68 kDa to 78 kDa.

Storage

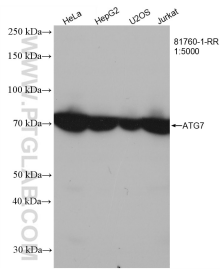
Storage:
Store at -20°C. Stable for one year after shipment.
Storage Buffer:
PBS with 0.02% sodium azide and 50% glycerol pH 7.3.
Aliquoting is unnecessary for -20°C storage

*** 20ul sizes contain 0.1% BSA

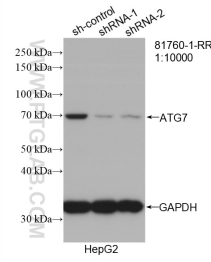
For technical support and original validation data for this product please contact:
T: 1 (888) 4PTGLAB (1-888-478-4522) (toll free in USA), or 1(312) 455-8498 (outside USA)
E: proteintech@ptglab.com
W: ptglab.com

This product is exclusively available under Proteintech Group brand and is not available to purchase from any other manufacturer.

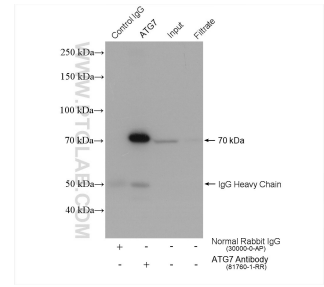
Selected Validation Data



HeLa cells were subjected to SDS PAGE followed by western blot with 81760-1-RR (ATG7 antibody) at dilution of 1:5000 incubated at room temperature for 1.5 hours.



WB result of ATG7 antibody (81760-1-RR; 1:10000; incubated at room temperature for 1.5 hours) with sh-Control and sh-ATG7 transfected HepG2 cells.



IP result of anti-ATG7(IP:81760-1-RR, 4ug; Detection:81760-1-RR 1:2000) with HeLa cells lysate 1720 ug.