

For Research Use Only

# ATG5 Recombinant antibody, PBS Only



Catalog Number: 81803-1-PBS

Featured Product

## Basic Information

Catalog Number:

81803-1-PBS

Size:

100ug, Concentration: 1mg/ml by Nanodrop;

Source:

Rabbit

Isotype:

IgG

Immunogen Catalog Number:

AG0214

GenBank Accession Number:

BC002699

GeneID (NCBI):

9474

UNIPROT ID:

Q9H1Y0

Full Name:

ATG5 autophagy related 5 homolog (S. cerevisiae)

Calculated MW:

32 kDa

Observed MW:

50-55 kDa

Purification Method:

Protein A purification

CloneNo.:

5M5

## Applications

Tested Applications:

WB, IP, IHC, Indirect ELISA

Species Specificity:

Human, mouse, rat

## Background Information

ATG5, also named as APG5L and ASP, belongs to the ATG5 family. It is required for autophagy. It plays an important role in the apoptotic process, possibly within the modified cytoskeleton. Its expression is a relatively late event in the apoptotic process, occurring downstream of caspase activity. Autophagy is a catabolic process for the autophagosomic-lysosomal degradation of bulk cytoplasmic contents. Formation of the autophagosome involves a ubiquitin-like conjugation system in which Atg12 is covalently bound to Atg5 and targeted to autophagosome vesicles. It mediates autophagosome-independent host protection. This antibody is raised against 28-275 amino acids of human ATG5. It can recognize the ATG5-ATG12 complex (55 kDa) which can be truncated and generate a 40-45 kDa band.

## Storage

Storage:

Store at -80°C.

Storage Buffer:

PBS Only

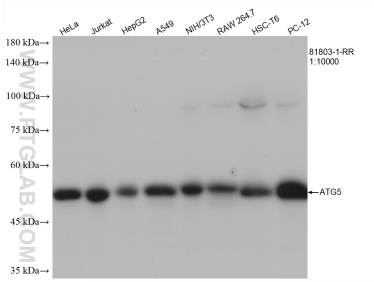
For technical support and original validation data for this product please contact:

T: 1 (888) 4PTGLAB (1-888-478-4522) (toll free in USA), or 1(312) 455-8498 (outside USA)

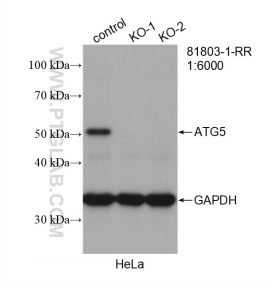
E: [proteintech@ptglab.com](mailto:proteintech@ptglab.com)  
W: [ptglab.com](http://ptglab.com)

This product is exclusively available under Proteintech Group brand and is not available to purchase from any other manufacturer.

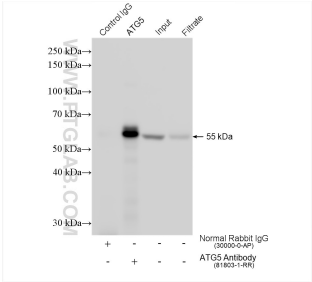
Selected Validation Data



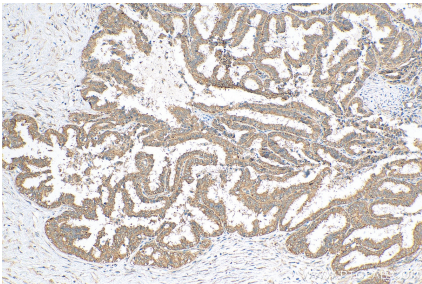
Various lysates were subjected to SDS PAGE followed by western blot with 81803-1-RR (ATG5 antibody) at dilution of 1:10000 incubated at room temperature for 1.5 hours. This data was developed using the same antibody clone with 81803-1-PBS in a different storage buffer formulation.



WB result of ATG5 antibody (81803-1-RR; 1:6000; room temperature for 1.5 hours) with wild-type and ATG5 knockout HeLa cells. This data was developed using the same antibody clone with 81803-1-PBS in a different storage buffer formulation.



IP result of anti-ATG5 (IP:81803-1-RR, 4ug; Detection:81803-1-RR 1:2000) with HeLa cells lysate 1280 ug. This data was developed using the same antibody clone with 81803-1-PBS in a different storage buffer formulation.



Immunohistochemical analysis of paraffin-embedded human ovary tumor tissue slide using 81803-1-RR (ATG5 antibody) at dilution of 1:1000 (under 10x lens). Heat mediated antigen retrieval with Tris-EDTA buffer (pH 9.0). This data was developed using the same antibody clone with 81803-1-PBS in a different storage buffer formulation.