

For Research Use Only

# GP73/GOLPH2 Recombinant antibody

Catalog Number: 81893-1-RR



## Basic Information

<b>Catalog Number:</b> 81893-1-RR	<b>GenBank Accession Number:</b> BC001740	<b>Purification Method:</b> Protein A purification
<b>Size:</b> 100ul , Concentration: 500 µg/ml by Nanodrop;	<b>GeneID (NCBI):</b> 51280	<b>CloneNo.:</b> 1I12
<b>Source:</b> Rabbit	<b>Full Name:</b> golgi membrane protein 1	<b>Recommended Dilutions:</b> WB 1:5000-1:50000 IF 1:450-1:1800
<b>Isotype:</b> IgG	<b>Calculated MW:</b> 45 kDa	
<b>Immunogen Catalog Number:</b> AG7207	<b>Observed MW:</b> 70-75 kDa	

## Applications

<b>Tested Applications:</b> IF, WB, ELISA	<b>Positive Controls:</b> WB : HEK-293 cells, HeLa cells, MCF-7 cells
<b>Species Specificity:</b> Human	<b>IF :</b> HeLa cells,

## Background Information

Golgi phosphoprotein 2 (GOLPH2, also known as GP73 or GOLM1) is a resident Golgi type-II membrane protein. It is predominantly expressed in the epithelial cells of many human tissues. GOLPH2 traffics through endosomes and can be secreted into the circulation. Its expression is upregulated in a number of tumors and GOLPH2 could be a promising serum marker for hepatocellular carcinoma. We got 70-75 kDa in western blotting due to phosphorylation.

## Storage

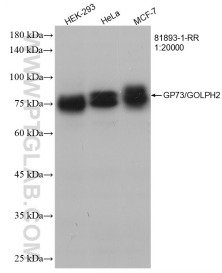
**Storage:**  
Store at -20°C. Stable for one year after shipment.  
**Storage Buffer:**  
PBS with 0.02% sodium azide and 50% glycerol pH 7.3.  
Aliquoting is unnecessary for -20°C storage

\*\*\* 20ul sizes contain 0.1% BSA

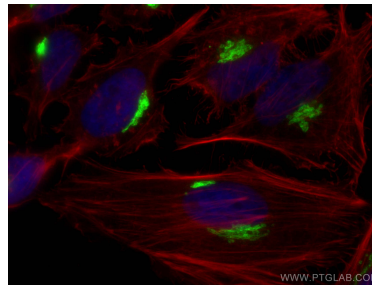
For technical support and original validation data for this product please contact:  
T: 1 (888) 4PTGLAB (1-888-478-4522) (toll free in USA), or 1(312) 455-8498 (outside USA) E: proteintech@ptglab.com W: ptglab.com

This product is exclusively available under Proteintech Group brand and is not available to purchase from any other manufacturer.

## Selected Validation Data



Various lysates were subjected to SDS PAGE followed by western blot with 81893-1-RR (GP73/GOLPH2 antibody) at dilution of 1:20000 incubated at room temperature for 1.5 hours.



Immunofluorescent analysis of (4% PFA) fixed HeLa cells using GP73/GOLPH2 antibody (81893-1-RR, Clone: 1112 ) at dilution of 1:900 and CoraLite®488-Conjugated AffiniPure Goat Anti-Rabbit IgG(H+L), CL594-Phalloidin (red).