

For Research Use Only

# Calnexin Recombinant antibody

Catalog Number: 81938-1-RR

4 Publications



## Basic Information

Catalog Number:

81938-1-RR

Size:

100ul, Concentration: 1000 ug/ml by Nanodrop;

Source:

Rabbit

Isotype:

IgG

Immunogen Catalog Number:

AG0697

GenBank Accession Number:

BC003552

GeneID (NCBI):

821

UNIPROT ID:

P27824

Full Name:

calnexin

Calculated MW:

90 kDa

Observed MW:

90 kDa

Purification Method:

Protein A purification

CloneNo.:

3K18

Recommended Dilutions:

WB 1:5000-1:50000

IHC 1:200-1:800

IF/ICC 1:500-1:2000

## Applications

Tested Applications:

WB, IHC, IF/ICC, ELISA

Cited Applications:

WB

Species Specificity:

human, mouse, rat

Cited Species:

human, mouse

**Note-IHC: suggested antigen retrieval with TE buffer pH 9.0; (\*) Alternatively, antigen retrieval may be performed with citrate buffer pH 6.0**

Positive Controls:

WB : HEK-293 cells, HeLa cells, HepG2 cells, MCF-7 cells, K-562 cells, NIH/3T3 cells, C6 cells

IHC : human cervical cancer tissue,

IF/ICC : HepG2 cells,

## Background Information

Calnexin is a molecular chaperone that resides in the endoplasmic reticulum (ER) and participates in the folding and assembly of newly synthesized proteins. Calnexin is highly abundant in ER and is frequently used as an ER marker.

## Notable Publications

Author	Pubmed ID	Journal	Application
Jian Zhang	39862429	STAR Protoc	WB
Ming Zhou	39831459	Cell Biol Int	WB
Xiao Lin	39420345	Cardiovasc Diabetol	WB

## Storage

Storage:

Store at -20°C. Stable for one year after shipment.

Storage Buffer:

PBS with 0.02% sodium azide and 50% glycerol, pH7.3

Aliquoting is unnecessary for -20°C storage

\*\*\* 20ul sizes contain 0.1% BSA

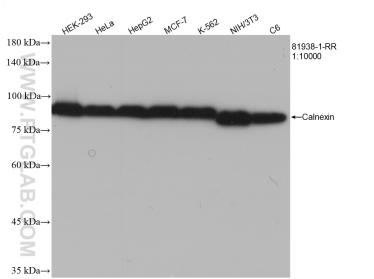
For technical support and original validation data for this product please contact:

T: 1 (888) 4PTGLAB (1-888-478-4522) (toll free in USA), or 1(312) 455-8498 (outside USA)

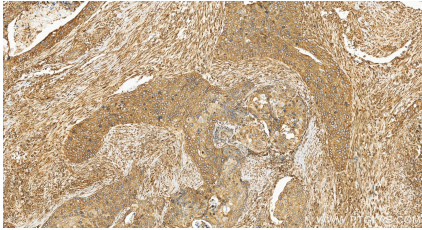
E: [proteintech@ptglab.com](mailto:proteintech@ptglab.com)  
W: [ptglab.com](http://ptglab.com)

This product is exclusively available under Proteintech Group brand and is not available to purchase from any other manufacturer.

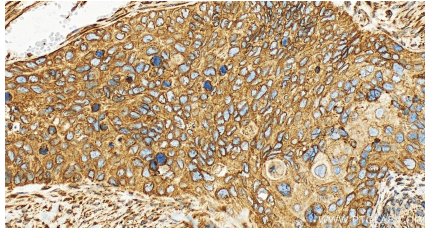
Selected Validation Data



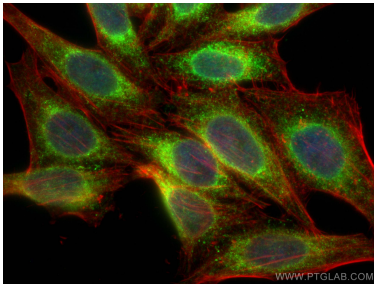
Various lysates were subjected to SDS PAGE followed by western blot with 81938-1-RR (Calnexin antibody) at dilution of 1:10000 incubated at room temperature for 1.5 hours.



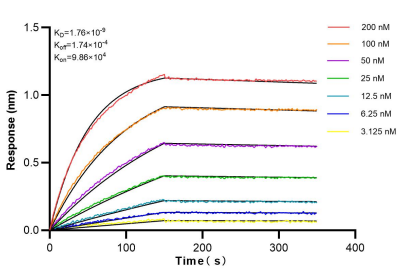
Immunohistochemical analysis of paraffin-embedded human cervical cancer tissue slide using 81938-1-RR (Calnexin antibody) at dilution of 1:400 (under 20x lens). Heat mediated antigen retrieval with Tris-EDTA buffer (pH 9.0).



Immunohistochemical analysis of paraffin-embedded human cervical cancer tissue slide using 81938-1-RR (Calnexin antibody) at dilution of 1:400 (under 20x lens). Heat mediated antigen retrieval with Tris-EDTA buffer (pH 9.0).



Immunofluorescent analysis of (4% PFA) fixed HepG2 cells using Calnexin antibody (81938-1-RR, Clone: 3K18 ) at dilution of 1:1000 and CoraLite®488-Conjugated AffiniPure Goat Anti-Rabbit IgG(H+L), CL594-Phalloidin (red).



Biolayer interferometry (BLI) kinetic assays of 81938-1-RR against Human Calnexin were performed. The affinity constant is 1.76 nM.