

For Research Use Only

LDHB Recombinant antibody, PBS Only



Catalog Number: 81963-1-PBS

Basic Information

Catalog Number: 81963-1-PBS	GenBank Accession Number: BC002362	Purification Method: Protein A purification
Size: 100ug , Concentration: 1mg/ml by Nanodrop;	GeneID (NCBI): 3945	CloneNo.: 1M20
Source: Rabbit	UNIPROT ID: P07195	
Isotype: IgG	Full Name: lactate dehydrogenase B	
Immunogen Catalog Number: AG6605	Calculated MW: 36 kDa	
	Observed MW: 35 kDa	

Applications

Tested Applications:
WB, IP, IF/ICC, Indirect ELISA

Species Specificity:
Human, mouse, rat

Background Information

LDHB, also named as LDH-H and NY-REN-46, belongs to the LDH/MDH superfamily. And LDH family. It is an enzyme which catalyzes the reversible conversion of pyruvate and NADH to lactate and NAD⁺ in the glycolytic pathway. LDH comprises LDHA and LDHB, two subunits that are encoded by independent genes. In muscle or liver, most of the LDH is composed of four LDHA subunits, and preferably catalyzes the reduction of pyruvate to lactate. In heart and brain, LDH is mainly composed of four LDHB subunits, and predominantly catalyzes the oxidation of lactate to pyruvate. In other tissues, LDH is composed of both LDHA and LDHB. (PMID: 26269128, 31804482)

Storage

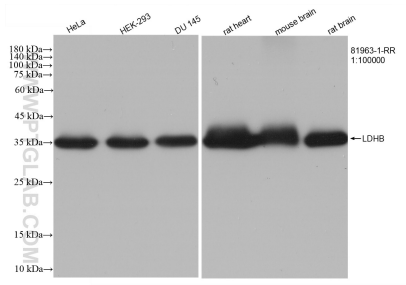
Storage:
Store at -80°C.

Storage Buffer:
PBS Only

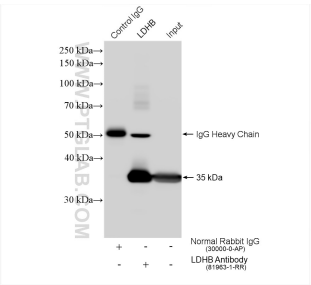
For technical support and original validation data for this product please contact:
T: 1 (888) 4PTGLAB (1-888-478-4522) (toll free in USA), or 1(312) 455-8498 (outside USA)
E: proteintech@ptglab.com
W: ptglab.com

This product is exclusively available under Proteintech Group brand and is not available to purchase from any other manufacturer.

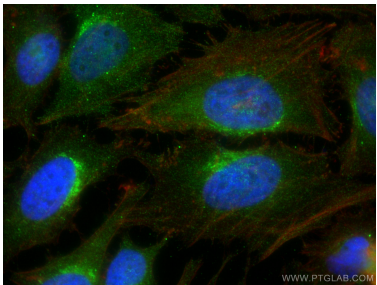
Selected Validation Data



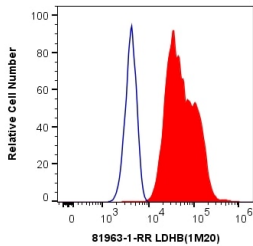
Various lysates were subjected to SDS PAGE followed by western blot with 81963-1-RR (LDHB antibody) at dilution of 1:100000 incubated at room temperature for 1.5 hours. This data was developed using the same antibody clone with 81963-1-PBS in a different storage buffer formulation.



IP result of anti-LDHB (IP:81963-1-RR, 4ug; Detection:81963-1-RR 1:50000) with HeLa cells lysate 2000 ug. This data was developed using the same antibody clone with 81963-1-PBS in a different storage buffer formulation.



Immunofluorescent analysis of (4% PFA) fixed HeLa cells using LDHB antibody (81963-1-RR, Clone: 1M20) at dilution of 1:1000 and CoraLite®488-Conjugated AffiniPure Goat Anti-Rabbit IgG(H+L), CL594-Phalloidin (red). This data was developed using the same antibody clone with 81963-1-PBS in a different storage buffer formulation.



1X10⁶ HeLa cells were intracellularly stained with 0.4 ug Anti-Human LDHB (81963-1-RR, Clone:1M20) and CoraLite®488-Conjugated AffiniPure Goat Anti-Rabbit IgG(H+L) at dilution 1:1000 (red), or 0.4 ug Isotype Control. Cells were fixed with 4% PFA and permeabilized with Flow Cytometry Perm Buffer (PF00011-C). This data was developed using the same antibody clone with 81963-1-PBS in a different storage buffer formulation.