

For Research Use Only

BIM/BCL2L11 Recombinant monoclonal antibody, PBS Only (Capture)

Catalog Number: 81976-3-PBS



Basic Information

Catalog Number: 81976-3-PBS	GenBank Accession Number: BC033694	Purification Method: Protein A purification
Size: 100ug , Concentration: 1 mg/ml by Nanodrop;	GeneID (NCBI): 10018	CloneNo.: 252250A2
Source: Rabbit	UNIPROT ID: O43521	
Isotype: IgG	Full Name: BCL2-like 11 (apoptosis facilitator)	
Immunogen Catalog Number: AG11875	Calculated MW: 198 aa, 22 kDa	
	Observed MW: 16, 23 kDa	

Applications

Tested Applications:
WB, Cytometric bead array, Indirect ELISA

Species Specificity:
human, mouse

Product Information

81976-3-PBS targets BIM/BCL2L11 as part of a matched antibody pair:

MP02863-1: 81976-3-PBS capture and 81976-2-PBS detection (validated in Cytometric bead array)

Unconjugated rabbit recombinant monoclonal antibody in PBS only (BSA and azide free) storage buffer at a concentration of 1 mg/mL, ready for conjugation. Created using Proteintech's proprietary in-house recombinant technology. Recombinant production enables unrivalled batch-to-batch consistency, easy scale-up, and future security of supply.

This conjugation ready format makes antibodies ideal for use in many applications including: ELISAs, multiplex assays requiring matched pairs, mass cytometry, and multiplex imaging applications. Antibody use should be optimized by the end user for each application and assay.

Background Information

BIM (BCL2L11) is a central BH3-only apoptosis activator that antagonizes anti-apoptotic BCL-2 proteins and directly triggers BAX/BAK-mediated mitochondrial permeabilization. Induced by cellular stress and cytokine withdrawal, BIM governs developmental cell death, immune tolerance, and tumor suppression. Alterations in BIM expression or splicing-particularly the deletion polymorphism affecting its BH3-only activity-underlie cancer therapy resistance, autoimmune disorders, and neuronal apoptosis.

Storage

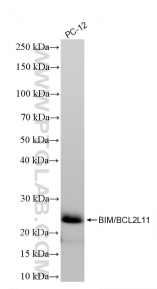
Storage:
Store at -80°C.

Storage Buffer:
PBS only, pH7.3

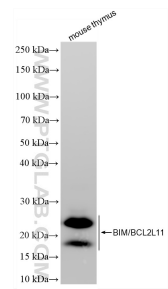
For technical support and original validation data for this product please contact:
T: 1 (888) 4PTGLAB (1-888-478-4522) (toll free in USA), or 1(312) 455-8498 (outside USA)
E: proteintech@ptglab.com
W: ptglab.com

This product is exclusively available under Proteintech Group brand and is not available to purchase from any other manufacturer.

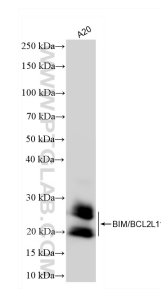
Selected Validation Data



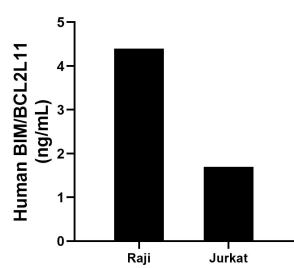
PC-12 cells were subjected to SDS PAGE followed by western blot with 81976-3-RR (BIM, BCL2L11 antibody) at dilution of 1:10000 incubated at room temperature for 1.5 hours. This data was developed using the same antibody clone with 81976-3-PBS in a different storage buffer formulation.



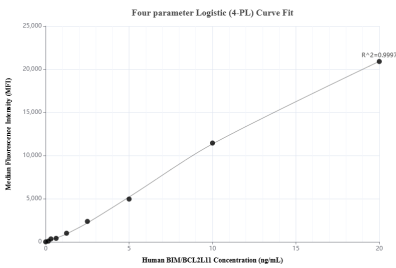
mouse thymus tissue were subjected to SDS PAGE followed by western blot with 81976-3-RR (BIM, BCL2L11 antibody) at dilution of 1:10000 incubated at room temperature for 1.5 hours. This data was developed using the same antibody clone with 81976-3-PBS in a different storage buffer formulation.



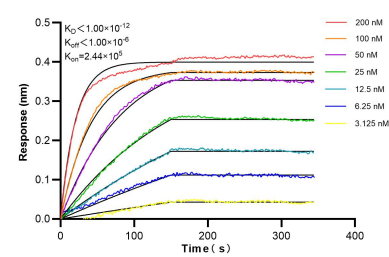
A20 cells were subjected to SDS PAGE followed by western blot with 81976-3-RR (BIM, BCL2L11 antibody) at dilution of 1:10000 incubated at room temperature for 1.5 hours. This data was developed using the same antibody clone with 81976-3-PBS in a different storage buffer formulation.



The mean BIM/BCL2L11 concentration was determined to be 4.4 ng/mL in Raji cell extract based on a 1.3 mg/mL extract load, 1.7 ng/mL in Jurkat cell extract based on a 1.2 mg/mL extract load.



Cytometric bead array standard curve of MP02863-1, BIM/BCL2L11 Recombinant Matched Antibody Pair, PBS Only. Capture antibody: 81976-3-PBS. Detection antibody: 81976-2-PBS. Standard: Ag11875. Range: 0.156-20 ng/mL.



Bi-layer interferometry (BLI) kinetic assays of 81976-3-RR against Human BIM/BCL2L11 were performed. The affinity constant is below 1 pM.