

For Research Use Only

WTAP Recombinant antibody, PBS Only (Capture)

Catalog Number: 81987-3-PBS



Basic Information

Catalog Number: 81987-3-PBS	GenBank Accession Number: BC000383	Purification Method: Protein A purification
Size: 100ug , Concentration: 1 mg/ml by Nanodrop;	GeneID (NCBI): 9589	CloneNo.: 250657H6
Source: Rabbit	UNIPROT ID: Q15007	
Isotype: IgG	Full Name: Wilms tumor 1 associated protein	
Immunogen Catalog Number: AG0259	Calculated MW: 45 kDa	

Applications

Tested Applications:
Cytometric bead array, Sandwich ELISA, Indirect ELISA, Sample test

Species Specificity:
human

Product Information

81987-3-PBS targets WTAP as part of a matched antibody pair:

MP02241-1: 81987-3-PBS capture and 81987-2-PBS detection (validated in Cytometric bead array)

MP02241-2: 81987-3-PBS capture and 81987-5-PBS detection (validated in Sandwich ELISA)

Unconjugated rabbit recombinant monoclonal antibody in PBS only (BSA and azide free) storage buffer at a concentration of 1 mg/mL, ready for conjugation. Created using Proteintech's proprietary in-house recombinant technology. Recombinant production enables unrivalled batch-to-batch consistency, easy scale-up, and future security of supply.

This conjugation ready format makes antibodies ideal for use in many applications including: ELISAs, multiplex assays requiring matched pairs, mass cytometry, and multiplex imaging applications. Antibody use should be optimized by the end user for each application and assay.

Storage

Storage:
Store at -80°C.
Storage Buffer:
PBS only, pH7.3

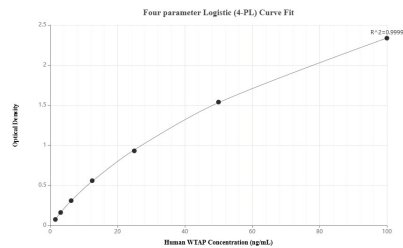
For technical support and original validation data for this product please contact:

T: 1 (888) 4PTGLAB (1-888-478-4522) (toll free in USA), or 1(312) 455-8498 (outside USA)

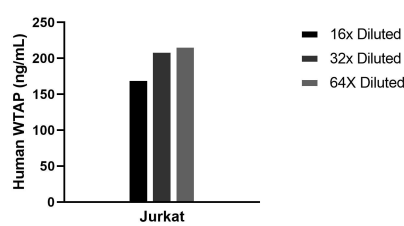
E: proteintech@ptglab.com
W: ptglab.com

This product is exclusively available under Proteintech Group brand and is not available to purchase from any other manufacturer.

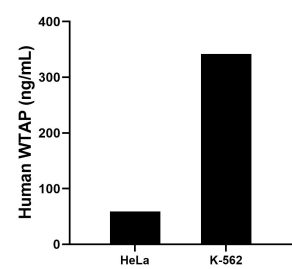
Selected Validation Data



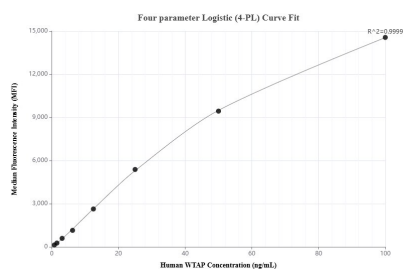
Sandwich ELISA standard curve of MP02241-2, Human WTAP Recombinant Matched Antibody Pair - PBS only. 81987-3-PBS was coated to a plate as the capture antibody and incubated with serial dilutions of standard Ag0259. 81987-5-PBS was HRP conjugated as the detection antibody. Range: 1.56-100 ng/mL



The mean WTAP concentration was determined to be 199.5 ng/mL in Jurkat cell extract based on a 2.2 mg/mL extract load.



The mean WTAP concentration was determined to be 59.04 ng/mL in HeLa cell extract based on a 1.3 mg/mL extract load and 341.94 ng/mL in K-562 cell extract based on a 2.5 mg/mL extract load.



Cytometric bead array standard curve of MP02241-1, WTAP Recombinant Matched Antibody Pair, PBS Only. Capture antibody: 81987-3-PBS. Detection antibody: 81987-2-PBS. Standard: Ag0259. Range: 0.781-100 ng/mL