

For Research Use Only

# WTAP Recombinant antibody

Catalog Number: 81987-4-RR



## Basic Information

<b>Catalog Number:</b> 81987-4-RR	<b>GenBank Accession Number:</b> BC000383	<b>Purification Method:</b> Protein A purification
<b>Size:</b> 100ul , Concentration: 1000 µg/ml by Nanodrop;	<b>GeneID (NCBI):</b> 9589	<b>CloneNo.:</b> 250657D4
<b>Source:</b> Rabbit	<b>UNIPROT ID:</b> Q15007	<b>Recommended Dilutions:</b> WB: 1:5000-1:50000 IF/ICC: 1:200-1:800
<b>Isotype:</b> IgG	<b>Full Name:</b> Wilms tumor 1 associated protein	
<b>Immunogen Catalog Number:</b> AG0259	<b>Calculated MW:</b> 45 kDa	
	<b>Observed MW:</b> 50 kDa	

## Applications

<b>Tested Applications:</b> WB, IF/ICC, ELISA	<b>Positive Controls:</b>
<b>Species Specificity:</b> human, mouse	<b>WB :</b> HeLa cells, HepG2 cells, HEK-293 cells, Jurkat cells, NIH/3T3 cells
	<b>IF/ICC :</b> Jurkat cells,

## Background Information

WTAP, also named as KIAA0105 and hFL(2)D, is previously identified as a protein associated with Wilms' tumor-1 (WT-1) protein that is essential for the development of the genitourinary system. It is a Pre-mRNA-splicing regulator protein. It is a regulatory subunit of the WMM N6-methyltransferase complex which plays a role in the efficiency of mRNA splicing and processing and mRNA stability. It is required for accumulation of METTL3 and METTL14 to nuclear speckle. MW of WTAP is 45-50 kDa due to phosphorylation.

## Storage

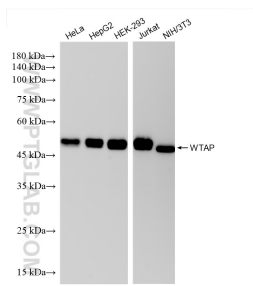
**Storage:**  
Store at -20°C. Stable for one year after shipment.  
**Storage Buffer:**  
PBS with 0.02% sodium azide and 50% glycerol, pH7.3  
Aliquoting is unnecessary for -20°C storage

\*\*\* 20ul sizes contain 0.1%BSA

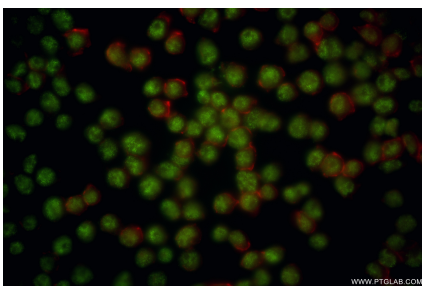
For technical support and original validation data for this product please contact:  
T: 1 (888) 4PTGLAB (1-888-478-4522) (toll free in USA), or 1(312) 455-8498 (outside USA)  
E: [proteintech@ptglab.com](mailto:proteintech@ptglab.com)  
W: [ptglab.com](http://ptglab.com)

This product is exclusively available under Proteintech Group brand and is not available to purchase from any other manufacturer.

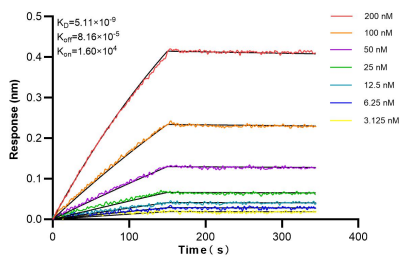
## Selected Validation Data



Various lysates were subjected to SDS PAGE followed by western blot with 81987-4-RR (WTAP antibody) at dilution of 1:10000 incubated at room temperature for 1.5 hours.



Immunofluorescent analysis of (4% PFA) fixed Jurkat cells using WTAP antibody (81987-4-RR, Clone: 250657D4) at dilution of 1:500 and CoraLite® 488-Conjugated Goat Anti-Rabbit IgG(H+L) (SA00013-2), CL594-Phalloidin (red).



Biolayer interferometry (BLI) kinetic assays of 81987-4-RR against Human WTAP were performed. The affinity constant is 5.11 nM.