

For Research Use Only

Mouse IL-10 Recombinant antibody, PBS Only (Detector)

Catalog Number: 82191-3-PBS



Basic Information

Catalog Number: 82191-3-PBS	GenBank Accession Number: NM_010548	Purification Method: Protein A purification
Size: 100ug , Concentration: 1 mg/ml by Nanodrop;	GeneID (NCBI): 16153	CloneNo.: 240430G12
Source: Rabbit	UNIPROT ID: P18893	
Isotype: IgG	Full Name: interleukin 10	
	Calculated MW: 21 kDa	

Applications

Tested Applications:
WB, IF/ICC, Cytometric bead array, Indirect ELISA

Species Specificity:
mouse

Product Information

82191-3-PBS targets IL-10 as part of a matched antibody pair:

MP00507-2: 82191-4-PBS capture and 82191-3-PBS detection (validated in Cytometric bead array)

Unconjugated rabbit recombinant monoclonal antibody in PBS only (BSA and azide free) storage buffer at a concentration of 1 mg/mL, ready for conjugation. Created using Proteintech's proprietary in-house recombinant technology. Recombinant production enables unrivalled batch-to-batch consistency, easy scale-up, and future security of supply.

This conjugation ready format makes antibodies ideal for use in many applications including: ELISAs, multiplex assays requiring matched pairs, mass cytometry, and multiplex imaging applications. Antibody use should be optimized by the end user for each application and assay.

Storage

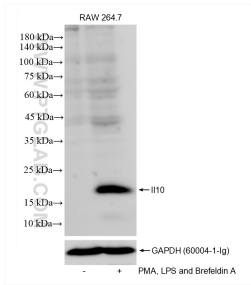
Storage:
Store at -80°C.

Storage Buffer:
PBS Only

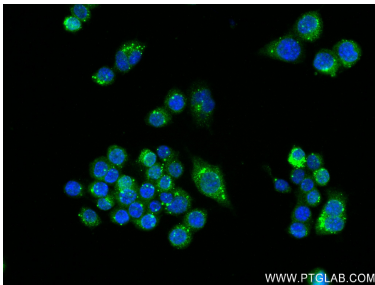
For technical support and original validation data for this product please contact:
T: 1 (888) 4PTGLAB (1-888-478-4522) (toll free in USA), or 1(312) 455-8498 (outside USA)
E: proteintech@ptglab.com
W: ptglab.com

This product is exclusively available under Proteintech Group brand and is not available to purchase from any other manufacturer.

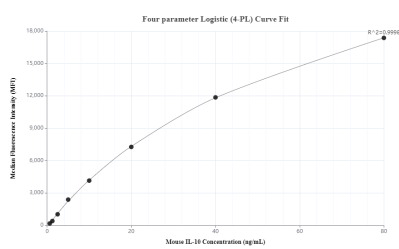
Selected Validation Data



Untreated, PMA, LPS and Brefeldin A treated RAW 264.7 cells were subjected to SDS PAGE followed by western blot with 82191-3-RR (IL10 antibody) at dilution of 1:2000 incubated at room temperature for 1.5 hours. This data was developed using the same antibody clone with 82191-3-PBS in a different storage buffer formulation.



Immunofluorescent analysis of (4% PFA) fixed LPS and Brefeldin A treated RAW 264.7 cells using IL10 antibody (82191-3-RR, Clone: 240430G12) at dilution of 1:250 and CoraLite®488-Conjugated AffiniPure Goat Anti-Rabbit IgG(H+L) (SA00013-2). This data was developed using the same antibody clone with 82191-3-PBS in a different storage buffer formulation.



Cytometric bead array standard curve of MP00507-2, MOUSE IL-10 Recombinant Matched Antibody Pair, PBS Only. Capture antibody: 82191-4-PBS. Detection antibody: 82191-3-PBS. Standard: Eg0026. Range: 0.625-80 ng/mL.