

For Research Use Only

SNAI1 Recombinant antibody

Catalog Number: 82214-2-RR



Basic Information

Catalog Number: 82214-2-RR	GenBank Accession Number: BC012910	Purification Method: Protein A purification
Size: 100ul , Concentration: 1000 µg/ml by Nanodrop;	GeneID (NCBI): 6615	CloneNo.: 230035C9
Source: Rabbit	UNIPROT ID: O95863	Recommended Dilutions: WB 1:2000-1:10000
Isotype: IgG	Full Name: snail homolog 1 (Drosophila)	
Immunogen Catalog Number: AG3723	Calculated MW: 264 aa, 29 kDa	
	Observed MW: 35 kDa	

Applications

Tested Applications: WB, ELISA	Positive Controls: WB : HeLa cells,
Species Specificity: Human	

Background Information

SNAI1, a member of SNAI1 family of protein, participates in the epithelial to mesenchymal transition (EMT) and formation and maintenance of embryonic mesoderm. The snail family share a common structural, that a highly conserved C-terminal region containing a zinc finger transcription factor. SNAI1 interacts with other corepressor, such as Ajuba, PRMT5 and SIN3a or HDAC1 and 2, to repress the target gene. As the phosphorylation modification of SNAI1 protein, the range of molecular weight of SNAI1 is about 25-30 kDa (PMID: 22276203). Once phosphorylated (probably on Ser-107, Ser-111, Ser-115 and Ser-119) it is exported from the nucleus to the cytoplasm where subsequent phosphorylation of the destruction motif and ubiquitination involving BTRC occurs.

Storage

Storage:
Store at -20°C. Stable for one year after shipment.
Storage Buffer:
PBS with 0.02% sodium azide and 50% glycerol pH 7.3.
Aliquoting is unnecessary for -20°C storage

*** 20ul sizes contain 0.1% BSA

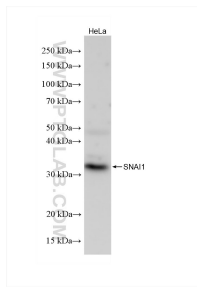
For technical support and original validation data for this product please contact:

T: 1 (888) 4PTGLAB (1-888-478-4522) (toll free
in USA), or 1(312) 455-8498 (outside USA)

E: proteintech@ptglab.com
W: ptglab.com

This product is exclusively available under Proteintech Group brand and is not available to purchase from any other manufacturer.

Selected Validation Data



HeLa cells were subjected to SDS PAGE followed by western blot with 82214-2-RR (SNAI1 antibody) at dilution of 1:5000 incubated at room temperature for 1.5 hours.