

For Research Use Only

# S100B Recombinant antibody, PBS Only

Catalog Number: 82271-8-PBS



## Basic Information

<b>Catalog Number:</b> 82271-8-PBS	<b>GenBank Accession Number:</b> BC001766	<b>Purification Method:</b> Protein A purification
<b>Size:</b> 100ug, Concentration: 1 mg/ml by Nanodrop;	<b>GeneID (NCBI):</b> 6285	<b>CloneNo.:</b> 1E2
<b>Source:</b> Rabbit	<b>UNIPROT ID:</b> P04271	
<b>Isotype:</b> IgG	<b>Full Name:</b> S100 calcium binding protein B	
<b>Immunogen Catalog Number:</b> AG7440	<b>Calculated MW:</b> 11 kDa	
	<b>Observed MW:</b> 11 kDa	

## Applications

**Tested Applications:**  
WB, IHC, FC (Intra), Indirect ELISA

**Species Specificity:**  
human, rat

## Background Information

S100B is a member of the S100 family of proteins containing 2 EF-hand calcium-binding motifs and has been implicated in the regulation of cellular activities such as metabolism, motility and proliferation. In the nervous system, S100B is constitutively released by astrocytes into the extracellular space and at nanomolar concentrations, it can promote neurite outgrowth and protect neurons against oxidative stress. Within the central nervous system (CNS), S100B is thought to be a marker for astroglial activation, linking astrocyte dysfunction to schizophrenia. In addition to astrocytes, S100B is released from many cell types, such as, adipocytes, chondrocytes, cardiomyocytes and lymphocytes. Serum S100B represents a new biomarker for mood disorders.

## Storage

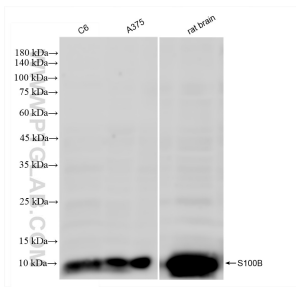
**Storage:**  
Store at -80°C.

**Storage Buffer:**  
PBS Only

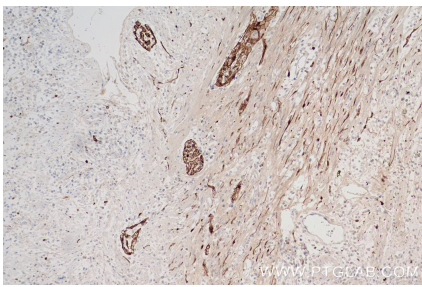
For technical support and original validation data for this product please contact:  
T: 1 (888) 4PTGLAB (1-888-478-4522) (toll free in USA), or 1(312) 455-8498 (outside USA)  
E: [proteintech@ptglab.com](mailto:proteintech@ptglab.com)  
W: [ptglab.com](http://ptglab.com)

This product is exclusively available under Proteintech Group brand and is not available to purchase from any other manufacturer.

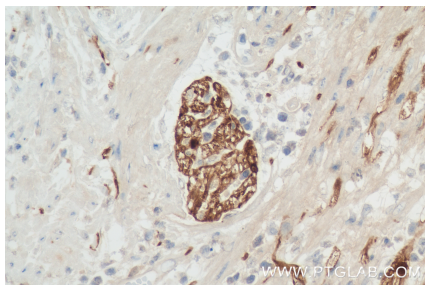
Selected Validation Data



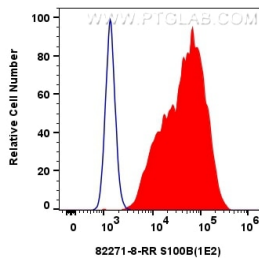
Various lysates were subjected to SDS PAGE followed by western blot with 82271-8-RR (S100B antibody) at dilution of 1:5150 incubated at room temperature for 1.5 hours. This data was developed using the same antibody clone with 82271-8-PBS in a different storage buffer formulation.



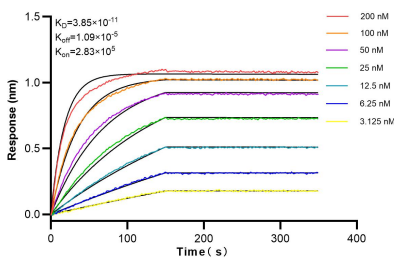
Immunohistochemical analysis of paraffin-embedded Human appendicitis tissue slide using 82271-8-RR (S100B antibody) at dilution of 1:1000 (under 10x lens). Heat mediated antigen retrieval with Tris-EDTA buffer (pH 9.0). This data was developed using the same antibody clone with 82271-8-PBS in a different storage buffer formulation.



Immunohistochemical analysis of paraffin-embedded Human appendicitis tissue slide using 82271-8-RR (S100B antibody) at dilution of 1:1000 (under 40x lens). Heat mediated antigen retrieval with Tris-EDTA buffer (pH 9.0). This data was developed using the same antibody clone with 82271-8-PBS in a different storage buffer formulation.



1x10<sup>6</sup> A375 cells were intracellularly stained with 0.25 ug S100B Recombinant antibody (82271-8-RR, Clone:1E2) and CoraLite®488-Conjugated Goat Anti-Rabbit IgG(H+L) (SA00013-2)(red), or 0.25 ug Rabbit IgG Isotype Control Recombinant Antibody (98136-1-RR, Clone: 240953C9) (blue). Cells were fixed with 4% PFA and permeabilized with Flow Cytometry Perm Buffer (PF00011-C). This data was developed using the same antibody clone with 82271-8-PBS in a



Biolayer interferometry (BLI) kinetic assays of 82271-8-RR against Human S100 Beta were performed. The affinity constant is 38.5 pM.