

For Research Use Only

ATF6 Recombinant antibody

Catalog Number: 82278-1-RR

Featured Product



Basic Information

Catalog Number:

82278-1-RR

Size:

100ul, Concentration: 500 ug/ml by Nanodrop;

Source:

Rabbit

Isotype:

IgG

Immunogen Catalog Number:

AG21456

GenBank Accession Number:

BC014969

GeneID (NCBI):

22926

UNIPROT ID:

P18850

Full Name:

activating transcription factor 6

Calculated MW:

75 kDa

Observed MW:

90-100 kDa

Purification Method:

Protein A purification

CloneNo.:

208

Recommended Dilutions:

WB 1:2000-1:10000

IP 0.5-4.0 ug for 1.0-3.0 mg of total protein lysate

Applications

Tested Applications:

WB, IP, ELISA

Species Specificity:

human

Positive Controls:

WB : HEK-293 cells, HeLa cells, MCF-7 cells, Jurkat cells, K-562 cells

IP : HeLa cells,

Background Information

Activating transcription factor 6 (ATF6) is a transcription factor that acts during endoplasmic reticulum stress by activating unfolded protein response target genes. Binds DNA on the 5'-CCAC[GA]-3' half of the ER stress response element (ERSE) (5'-CCAAT-N(9)-CCAC[GA]-3') and of ERSE II (5'-ATTGG-N-CCACG-3'). Binding to ERSE requires binding of NF-Y to ERSE. Could also be involved in activation of transcription by the serum response factor. During unfolded protein response an approximative 50 kDa fragment containing the cytoplasmic transcription factor domain is released by proteolysis. The cleavage seems to be performed sequentially by site-1 and site-2 proteases. The fully glycosylated form of ATF6, a 670 amino acid protein, exhibits an electrophoretic mobility of ~90 kDa in denaturing SDS-gels, in part because of the glycosylated modifications. ATF6 has 3 consensus sites for N-linked glycosylation and exists constitutively as a glycosylated protein. Differentially glycosylated ATF6 forms may result from mutations or experimental treatment (PMID:15804611) (PMID:14699159).

Storage

Storage:

Store at -20°C. Stable for one year after shipment.

Storage Buffer:

PBS with 0.02% sodium azide and 50% glycerol pH 7.3.

Aliquoting is unnecessary for -20°C storage

*** 20ul sizes contain 0.1% BSA

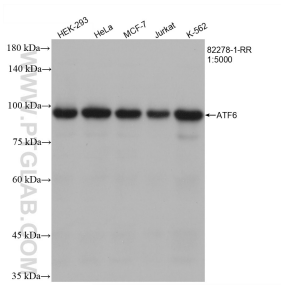
For technical support and original validation data for this product please contact:

T: 1 (888) 4PTGLAB (1-888-478-4522) (toll free in USA), or 1(312) 455-8498 (outside USA)

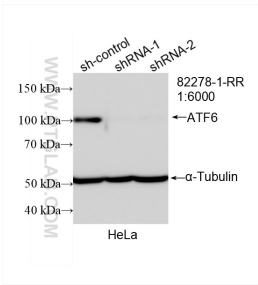
E: proteintech@ptglab.com
W: ptglab.com

This product is exclusively available under Proteintech Group brand and is not available to purchase from any other manufacturer.

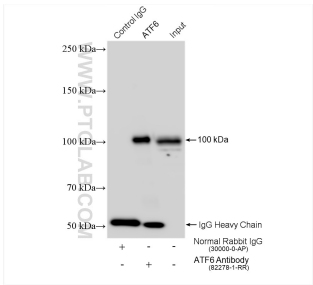
Selected Validation Data



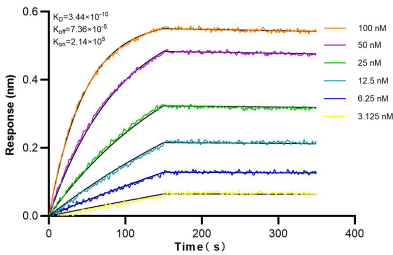
Various lysates were subjected to SDS PAGE followed by western blot with 82278-1-RR (ATF6 antibody) at dilution of 1:5000 incubated at room temperature for 1.5 hours.



WB result of ATF6 antibody (82278-1-RR; 1:6000; incubated at room temperature for 1.5 hours) with sh-Control and sh-ATF6 transfected HeLa cells.



IP result of anti-ATF6 (IP:82278-1-RR, 4ug; Detection:82278-1-RR 1:2000) with HeLa cells lysate 1280 ug.



Biolayer interferometry (BLI) kinetic assays of 82278-1-RR against Human ATF6 were performed. The affinity constant is 0.344 nM.