

For Research Use Only

CUL1 Recombinant antibody

Catalog Number: 82474-1-RR



Basic Information

Catalog Number: 82474-1-RR	GenBank Accession Number: BC034318	Purification Method: Protein A purification
Size: 100ul , Concentration: 500 µg/ml by Nanodrop;	GeneID (NCBI): 8454	CloneNo.: 5K17
Source: Rabbit	Full Name: cullin 1	Recommended Dilutions: WB 1:2000-1:17000 IP 0.5-4.0 ug for IP and 1:500-1:2000 for WB
Isotype: IgG	Calculated MW: 90 kDa	
Immunogen Catalog Number: AG3585	Observed MW: 90 kDa	

Applications

Tested Applications:

IP, WB, ELISA

Species Specificity:

Human, rat, mouse

Positive Controls:

WB : HeLa cells, HEK-293 cells, MCF-7 cells, A549 cells, NIH/3T3 cells, mouse brain tissue, rat brain tissue

IP : HeLa cells,

Background Information

The cullin family proteins are scaffold proteins for the Ring finger type E3 ligases. Humans express seven cullin proteins: CUL1-3, CUL4A, CUL4B, CUL5, and CUL7. Each cullin protein can form an E3 ligase similar to the prototype Ring-type E3 ligase Skp1-CUL1-F-box complex. The Cullin-RING-finger type E3 ligases are important regulators in early embryonic development, as highlighted by genetic studies demonstrating that knock-out of CUL1, CUL3, or CUL4A in mice results in early embryonic lethality.

Storage

Storage:

Store at -20°C. Stable for one year after shipment.

Storage Buffer:

PBS with 0.02% sodium azide and 50% glycerol pH 7.3.

Aliquoting is unnecessary for -20°C storage

***** 20ul sizes contain 0.1% BSA**

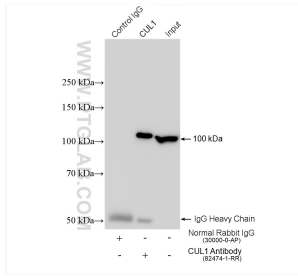
For technical support and original validation data for this product please contact:

T: 1 (888) 4PTGLAB (1-888-478-4522) (toll free in USA), or 1(312) 455-8498 (outside USA)

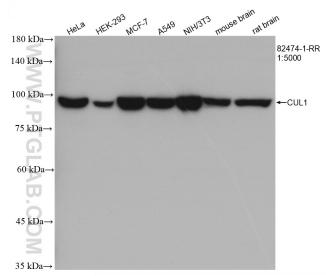
E: proteintech@ptglab.com
W: ptglab.com

This product is exclusively available under Proteintech Group brand and is not available to purchase from any other manufacturer.

Selected Validation Data



IP result of anti-CUL1(IP:82474-1-RR, 4 μ g;
Detection:82474-1-RR 1:1000) with HeLa cells
lysate 1280 μ g.



Various lysates were subjected to SDS PAGE
followed by western blot with 82474-1-RR (CUL1
antibody) at dilution of 1:5000 incubated at room
temperature for 1.5 hours.