

For Research Use Only

# KIF5B Recombinant antibody

Catalog Number: 82485-1-RR

Featured Product



## Basic Information

<b>Catalog Number:</b> 82485-1-RR	<b>GenBank Accession Number:</b> BC126279	<b>Purification Method:</b> Protein A purification
<b>Size:</b> 100ul , Concentration: 1000 µg/ml by Nanodrop;	<b>GeneID (NCBI):</b> 3799	<b>CloneNo.:</b> 2B18
<b>Source:</b> Rabbit	<b>Full Name:</b> kinesin family member 5B	<b>Recommended Dilutions:</b> WB 1:5000-1:50000
<b>Isotype:</b> IgG	<b>Calculated MW:</b> 963 aa, 110 kDa	
<b>Immunogen Catalog Number:</b> AG16250	<b>Observed MW:</b> 110-120 kDa	

## Applications

**Tested Applications:**  
WB, ELISA

**Species Specificity:**  
Human, mouse, rat

**Positive Controls:**  
WB : HeLa cells, HepG2 cells, A549 cells, Jurkat cells,  
mouse heart tissue, mouse brain tissue, rat brain tissue

## Background Information

KIF5B, also known as KINH, KNS1, belongs to the Kinesin-1 family. KIF5B contains three structural domains: a globular N-terminal motor domain, a central alpha-helical rod domain, and a globular C-terminal domain. During the G2 phase of the cell cycle in a BICD2-dependent manner, KIF5B antagonizes the dynein function and drives the separation of nuclei and centrosomes (PMID: 20386726). KIF5B drives the polarization of cytolitic granules and microtubule-organizing centers (MTOCs) toward the immune synapse between effector NK lymphocytes and target cells (KIF5B:24088571).

## Storage

**Storage:**  
Store at -20°C. Stable for one year after shipment.

**Storage Buffer:**  
PBS with 0.02% sodium azide and 50% glycerol pH 7.3.

Aliquoting is unnecessary for -20°C storage

\*\*\* 20ul sizes contain 0.1% BSA

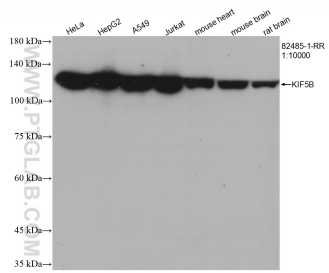
For technical support and original validation data for this product please contact:

T: 1 (888) 4PTGLAB (1-888-478-4522) (toll free  
in USA), or 1(312) 455-8498 (outside USA)

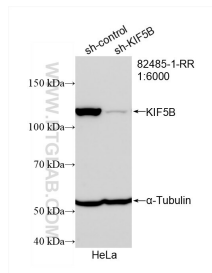
E: [proteintech@ptglab.com](mailto:proteintech@ptglab.com)  
W: [ptglab.com](http://ptglab.com)

This product is exclusively available under Proteintech Group brand and is not available to purchase from any other manufacturer.

## Selected Validation Data



Various lysates were subjected to SDS PAGE followed by western blot with 82485-1-RR (KIF5B antibody) at dilution of 1:10000 incubated at room temperature for 1.5 hours.



WB result of KIF5B antibody (82485-1-RR; 1:6000; incubated at room temperature for 1.5 hours) with sh-Control and sh-KIF5B transfected HeLa cells.