

# LASP1 Recombinant antibody

Catalog Number: 82491-1-RR

## Basic Information

|   |  |  |
|---|--|--|
| <b>Catalog Number:</b><br>82491-1-RR                          | <b>GenBank Accession Number:</b><br>BC012460 | <b>Purification Method:</b><br>Protein A purification  |
| <b>Size:</b><br>100ul , Concentration: 250 ug/ml by Nanodrop; | <b>GeneID (NCBI):</b><br>3927                | <b>CloneNo.:</b><br>4J2  |
| <b>Source:</b><br>Rabbit                                      | <b>ENSEMBL Gene ID:</b><br>ENSG00000002834   | <b>Recommended Dilutions:</b><br>WB 1:2000-1:10000<br>IHC 1:500-1:2000<br>IF/ICC 1:125-1:500 |
| <b>Isotype:</b><br>IgG  | <b>UNIPROT ID:</b><br>Q14847                 |  |
| <b>Immunogen Catalog Number:</b><br>AG0800                    | <b>Full Name:</b><br>LIM and SH3 protein 1   |  |
|   | <b>Calculated MW:</b><br>30 kDa              |  |
|   | <b>Observed MW:</b><br>35 kDa                |  |

## Applications

|   |   |
|---|---|
| <b>Tested Applications:</b><br>WB, IHC, IF/ICC, ELISA   | <b>Positive Controls:</b>   |
| <b>Species Specificity:</b><br>human, mouse, rat  | <b>WB :</b> A431 cells, SKOV-3 cells, PC-3 cells, HCT 116 cells, Jurkat cells, mouse brain tissue, rat brain tissue |
| <b>Note-IHC:</b> suggested antigen retrieval with <b>TE buffer pH 9.0; (*) Alternatively, antigen retrieval may be performed with citrate buffer pH 6.0</b> | <b>IHC :</b> human stomach tissue, human colon tissue   |
|   | <b>IF/ICC :</b> HeLa cells,   |

## Background Information

LASP1(LIM and SH3 protein 1), also known as MLN50, is a 261 amino acid protein that localizes to both the cytoplasm and the cytoskeleton(PMID: 7589475). LASP1 consists of an N-terminal LIM-domain with two zinc finger motifs, followed by two central actin-binding nebulin repeats, flanked by a linker region and a C-terminal SH3 domain (PMID: 17177073, 9848085). LASP-1 interacts with F-Actin and plays an important role in the regulation of Actin-associated cytoskeletal organization. Agonist-dependent changes in LASP1 phosphorylation may regulate Actin-related ion transport activities in epithelial cells (PMID: 15465019,12571245). Overexpression of LASP-1 is associated with breast cancer, and plays a role in tumor transformation and metastasis (PMID: 17956604).

## Storage

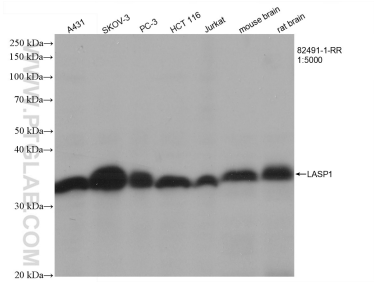
**Storage:**  
Store at -20°C. Stable for one year after shipment.  
**Storage Buffer:**  
PBS with 0.02% sodium azide and 50% glycerol pH 7.3.  
**Aliquoting is unnecessary for -20°C storage**

\*\*\* 20ul sizes contain 0.1% BSA

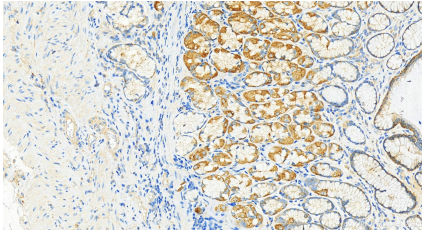
For technical support and original validation data for this product please contact:  
T: 1 (888) 4PTGLAB (1-888-478-4522) (toll free in USA), or 1(312) 455-8498 (outside USA)  
E: [proteintech@ptglab.com](mailto:proteintech@ptglab.com)  
W: [ptglab.com](http://ptglab.com)

This product is exclusively available under Proteintech Group brand and is not available to purchase from any other manufacturer.

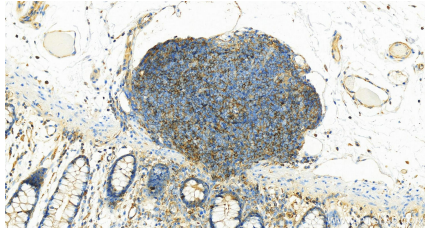
Selected Validation Data



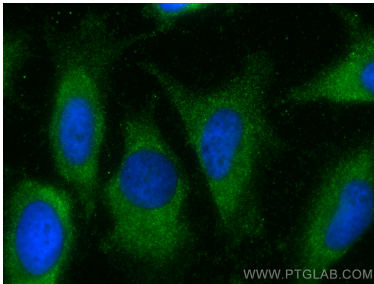
Various lysates were subjected to SDS PAGE followed by western blot with 82491-1-RR (LASP1 antibody) at dilution of 1:5000 incubated at room temperature for 1.5 hours.



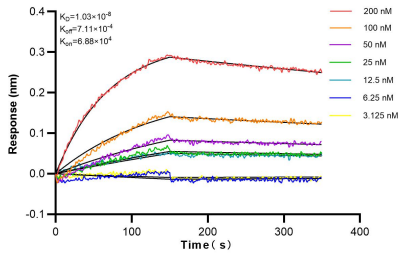
Immunohistochemical analysis of paraffin-embedded human stomach tissue slide using 82491-1-RR (LASP1 antibody) at dilution of 1:1000 (under 20x lens). Heat mediated antigen retrieval with Tris-EDTA buffer (pH 9.0).



Immunohistochemical analysis of paraffin-embedded human normal colon slide using 82491-1-RR (LASP1 antibody) at dilution of 1:1000 (under 20x lens). Heat mediated antigen retrieval with Tris-EDTA buffer (pH 9.0).



Immunofluorescent analysis of (-20°C Methanol) fixed HeLa cells using LASP1 antibody (82491-1-RR, Clone: 4J2 ) at dilution of 1:250 and CoraLite®488-Conjugated AffiniPure Goat Anti-Rabbit IgG(H+L).



Biolayer interferometry (BLI) kinetic assays of 82491-1-RR against Human LASP1 were performed. The affinity constant is 10.3 nM.