

For Research Use Only

# PTPN11/SHP2 Recombinant antibody



Catalog Number: 82503-1-RR

Featured Product

## Basic Information

<b>Catalog Number:</b> 82503-1-RR	<b>GenBank Accession Number:</b> BC008692	<b>Purification Method:</b> Protein A purification
<b>Size:</b> 100ul , Concentration: 1000 µg/ml by Nanodrop;	<b>GeneID (NCBI):</b> 5781	<b>CloneNo.:</b> 5L23
<b>Source:</b> Rabbit	<b>Full Name:</b> protein tyrosine phosphatase, non-receptor type 11	<b>Recommended Dilutions:</b> WB 1:5000-1:50000 IP 0.5-4.0 ug for IP and 1:2000-1:16000 for WB
<b>Isotype:</b> IgG	<b>Calculated MW:</b> 597 aa, 68 kDa	<b>IHC 1:2000-1:8000</b>
<b>Immunogen Catalog Number:</b> AG13660	<b>Observed MW:</b> 68 kDa	

## Applications

### Tested Applications:

IHC, IP, WB, ELISA

### Species Specificity:

Human, Mouse, Rat

**Note-IHC: suggested antigen retrieval with TE buffer pH 9.0; (\*) Alternatively, antigen retrieval may be performed with citrate buffer pH 6.0**

### Positive Controls:

**WB:** HeLa cells, A431 cells, HEK-293 cells, A549 cells, NIH/3T3 cells, HSC-T6 cells

**IP:** HEK-293 cells,

**IHC:** rat heart tissue,

## Background Information

PTPN11 (protein tyrosine phosphatase, non-receptor type 11), also named as PTP-1D, PTP2, PTP2C, PTP3, SHP2, CFC, CFC, BPTP3, SH-PTP2, SH-PTP3, and MGC14433, belongs to the protein-tyrosine phosphatase family and non-receptor class 2 subfamily. It modulates and regulates signaling through numerous pathways, many of which are active in the developing endocardial cushions and implicated the ERK pathway as a central mechanism (PMID:19017799). Its signaling may play equally important roles in retinal survival in both physiological and pathological conditions (PMID:21576358). Defects in PTPN11 are the cause of LEOPARD syndrome type 1 (LEOPARD1), Noonan syndrome type 1 (NS1), juvenile myelomonocytic leukemia (JMML), and metachondromatosis (MC). It has 3 isoforms produced by alternative splicing.

## Storage

### Storage:

Store at -20°C. Stable for one year after shipment.

### Storage Buffer:

PBS with 0.02% sodium azide and 50% glycerol pH 7.3.

Aliquoting is unnecessary for -20°C storage

\*\*\* 20ul sizes contain 0.1% BSA

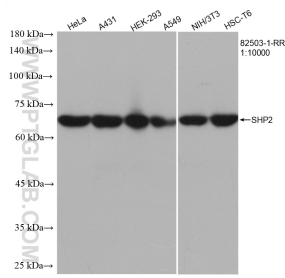
For technical support and original validation data for this product please contact:

T: 1 (888) 4PTGLAB (1-888-478-4522) (toll free in USA), or 1(312) 455-8498 (outside USA)

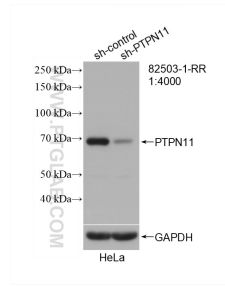
E: proteintech@ptglab.com  
W: ptglab.com

This product is exclusively available under Proteintech Group brand and is not available to purchase from any other manufacturer.

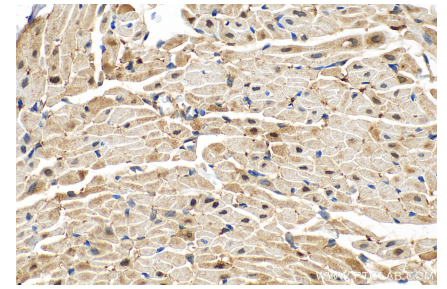
## Selected Validation Data



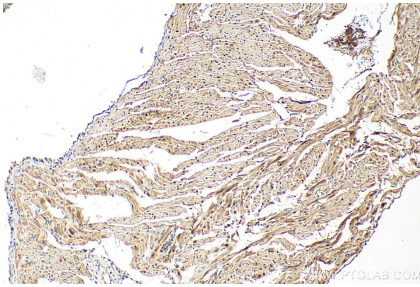
Various lysates were subjected to SDS PAGE followed by western blot with 82503-1-RR (PTPN11 antibody) at dilution of 1:10000 incubated at room temperature for 1.5 hours.



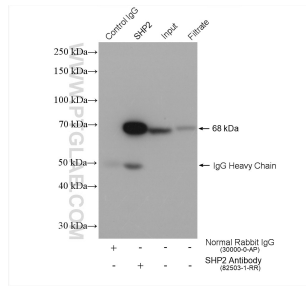
WB result of SHP2 antibody (82503-1-RR; 1:4000; incubated at room temperature for 1.5 hours) with sh-Control and sh-SHP2 transfected HeLa cells.



Immunohistochemical analysis of paraffin-embedded rat heart tissue slide using 82503-1-RR (SHP2 antibody) at dilution of 1:4000 (under 40x lens). Heat mediated antigen retrieval with Sodium Citrate buffer (pH 6.0).



Immunohistochemical analysis of paraffin-embedded rat heart tissue slide using 82503-1-RR (SHP2 antibody) at dilution of 1:4000 (under 10x lens). Heat mediated antigen retrieval with Sodium Citrate buffer (pH 6.0).



IP result of anti-SHP2(IP:82503-1-RR, 4ug; Detection:82503-1-RR 1:8000) with HEK-293 cells lysate 1280 ug.