

For Research Use Only

PKD2 Recombinant monoclonal antibody

Catalog Number: 82524-2-RR



Basic Information

Catalog Number: 82524-2-RR	GenBank Accession Number: BC112263	Purification Method: Protein A purification
Size: 100ul , Concentration: 1000 µg/ml by Nanodrop;	GeneID (NCBI): 5311	CloneNo.: 251151C3
Source: Rabbit	UNIPROT ID: Q13563	Recommended Dilutions: WB: 1:1000-1:4000 IF/ICC: 1:200-1:800
Isotype: IgG	Full Name: polycystic kidney disease 2 (autosomal dominant)	
	Calculated MW: 968 aa, 110 kDa	
	Observed MW: 110 kDa	

Applications

Tested Applications:
WB, IF/ICC, ELISA

Species Specificity:
human

Positive Controls:

WB : LNCaP cells, HeLa cells, HEK-293 cells, Caki-1 cells

IF/ICC : HEK-293 cells,

Background Information

Polycystin 2 (PKD2), the product of the gene mutated in type 2 autosomal dominant polycystic kidney disease, belongs to the polycystin family. PKD2 is a ~110-kDa six-transmembrane channel protein with cytoplasmic N- and C-termini. This protein functions as a Ca²⁺-activated intracellular Ca²⁺ release channel in the endoplasmic reticulum. It is also present in the plasma membrane, where it functions as a nonselective cation channel. In addition, PKD2 expression has been documented in the primary cilium of kidney epithelial cells, where it is believed to have an essential role in mediating Ca²⁺ entry in response to flow rate changes, suggesting that it may be part of a mechanosensing machinery residing in the primary cilium. (PMID: 16135816; 10497221)

Storage

Storage:
Store at -20°C. Stable for one year after shipment.

Storage Buffer:
PBS with 0.02% sodium azide and 50% glycerol, pH7.3

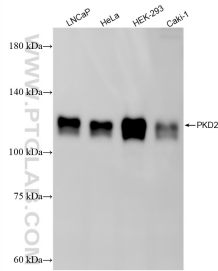
Aliquoting is unnecessary for -20°C storage

*** 20ul sizes contain 0.1% BSA

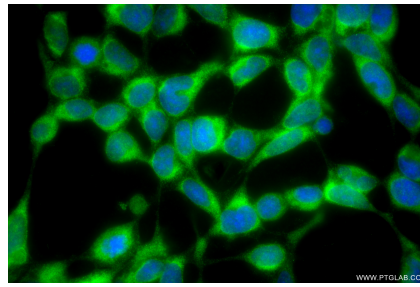
For technical support and original validation data for this product please contact:
T: 1 (888) 4PTGLAB (1-888-478-4522) (toll free in USA), or 1(312) 455-8498 (outside USA) E: proteintech@ptglab.com
W: ptglab.com

This product is exclusively available under Proteintech Group brand and is not available to purchase from any other manufacturer.

Selected Validation Data



Various lysates were subjected to SDS PAGE followed by western blot with 82524-2-RR (PKD2 antibody) at dilution of 1:2000 incubated at room temperature for 1.5 hours.



Immunofluorescent analysis of (-20°C Methanol) fixed HEK-293 cells using PKD2 antibody (82524-2-RR, Clone: 251151C3) at dilution of 1:400 and CoraLite® 488-Conjugated Goat Anti-Rabbit IgG(H+L) (SA00013-2).