

For Research Use Only

# WT1 Recombinant antibody

Catalog Number: 82525-1-RR



## Basic Information

<b>Catalog Number:</b> 82525-1-RR	<b>GenBank Accession Number:</b> BC032861	<b>Purification Method:</b> Protein A purification
<b>Size:</b> 100ul , Concentration: 500 µg/ml by Nanodrop;	<b>GeneID (NCBI):</b> 7490	<b>CloneNo.:</b> 2J13
<b>Source:</b> Rabbit	<b>Full Name:</b> Wilms tumor 1	<b>Recommended Dilutions:</b> WB 1:2000-1:10000
<b>Isotype:</b> IgG	<b>Calculated MW:</b> 449 aa, 49 kDa, 57 kDa	
<b>Immunogen Catalog Number:</b> AG19541	<b>Observed MW:</b> 52-55 kDa	

## Applications

<b>Tested Applications:</b> WB, ELISA	<b>Positive Controls:</b> WB : K-562 cells, MCF-7 cells
<b>Species Specificity:</b> Human	

## Background Information

The WT1 gene encodes a zinc finger DNA-binding protein that acts as a transcriptional activator or repressor depending on the cellular or chromosomal context, and it is required for the normal formation of the genitourinary system and mesothelial tissues. WT1 inhibits apoptosis through p53 and Bcl-2 and also inhibits the differentiation of leukemic cells. The function of WT1 may be isoform-specific: isoforms lacking the KTS motif may act as transcription factors. Isoforms containing the KTS motif may bind mRNA and play a role in mRNA metabolism or splicing. Isoform 1 has a lower affinity for DNA and can bind RNA. WT1 exists some isoforms with a range of molecular weight is 33-50 kDa.

## Storage

**Storage:**  
Store at -20°C. Stable for one year after shipment.  
**Storage Buffer:**  
PBS with 0.02% sodium azide and 50% glycerol pH 7.3.  
Aliquoting is unnecessary for -20°C storage

\*\*\* 20ul sizes contain 0.1% BSA

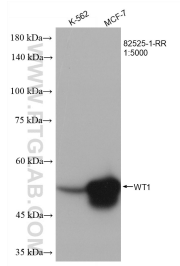
For technical support and original validation data for this product please contact:

T: 1 (888) 4PTGLAB (1-888-478-4522) (toll free in USA), or 1(312) 455-8498 (outside USA)

E: [proteintech@ptglab.com](mailto:proteintech@ptglab.com)  
W: [ptglab.com](http://ptglab.com)

This product is exclusively available under Proteintech Group brand and is not available to purchase from any other manufacturer.

## Selected Validation Data



Various lysates were subjected to SDS PAGE followed by western blot with 82525-1-RR (WT1 antibody) at dilution of 1:5000 incubated at room temperature for 1.5 hours.