

For Research Use Only

S100A8 Recombinant antibody, PBS Only (Capture)

Catalog Number: 82531-3-PBS



Basic Information

Catalog Number: 82531-3-PBS	GenBank Accession Number: BC005928	Purification Method: Protein A purification
Size: 100ug , Concentration: 1 mg/ml by Nanodrop;	GeneID (NCBI): 6279	CloneNo.: 242970G12
Source: Rabbit	UNIPROT ID: P05109	
Isotype: IgG	Full Name: S100 calcium binding protein A8	
Immunogen Catalog Number: EG3752	Calculated MW: 93 aa, 11 kDa	
	Observed MW: 11 kDa	

Applications

Tested Applications:
WB, Cytometric bead array, Indirect ELISA

Species Specificity:
human

Product Information

82531-3-PBS targets S100A8 as part of a matched antibody pair:

MP01972-1: 82531-3-PBS capture and 82531-2-PBS detection (validated in Cytometric bead array)

Unconjugated rabbit recombinant monoclonal antibody in PBS only (BSA and azide free) storage buffer at a concentration of 1 mg/mL, ready for conjugation. Created using Proteintech's proprietary in-house recombinant technology. Recombinant production enables unrivalled batch-to-batch consistency, easy scale-up, and future security of supply.

This conjugation ready format makes antibodies ideal for use in many applications including: ELISAs, multiplex assays requiring matched pairs, mass cytometry, and multiplex imaging applications. Antibody use should be optimized by the end user for each application and assay.

Background Information

S100A8 is a member of the S100 family of proteins containing 2 EF-hand calcium-binding motifs. S100 proteins are localized in the cytoplasm and/or nucleus of a wide range of cells, and involved in the regulation of a number of cellular processes such as cell cycle progression and differentiation. S100 genes include at least 13 members which are located as a cluster on chromosome 1q21. This protein may function in the inhibition of casein kinase and as a cytokine.

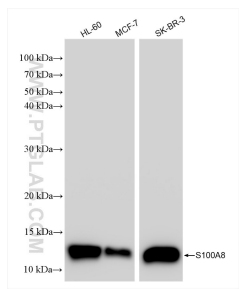
Storage

Storage:
Store at -80°C.
Storage Buffer:
PBS only, pH7.3

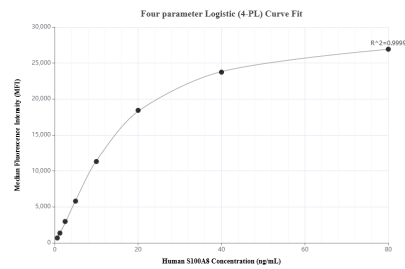
For technical support and original validation data for this product please contact:
T: 1 (888) 4PTGLAB (1-888-478-4522) (toll free in USA), or 1(312) 455-8498 (outside USA)
E: proteintech@ptglab.com
W: ptglab.com

This product is exclusively available under Proteintech Group brand and is not available to purchase from any other manufacturer.

Selected Validation Data



Various lysates were subjected to SDS PAGE followed by western blot with 82531-3-RR (S100A8 antibody) at dilution of 1:2000 incubated at room temperature for 1.5 hours. This data was developed using the same antibody clone with 82531-3-PBS in a different storage buffer formulation.



Cytometric bead array standard curve of MP01972-1, S100A8 Recombinant Matched Antibody Pair, PBS Only. Capture antibody: 82531-3-PBS. Detection antibody: 82531-2-PBS. Standard: Eg3752. Range: 0.625-80 ng/mL.