

For Research Use Only

# Stathmin 1 Recombinant antibody, PBS Only

Catalog Number: 82559-1-PBS

Featured Product



## Basic Information

### Catalog Number:

82559-1-PBS

### Size:

100ug, Concentration: 1mg/ml by Nanodrop;

### Source:

Rabbit

### Isotype:

IgG

### Immunogen Catalog Number:

AG1633

### GenBank Accession Number:

BC014353

### GeneID (NCBI):

3925

### UNIPROT ID:

P16949

### Full Name:

stathmin 1/oncoprotein 18

### Calculated MW:

18 kDa

### Observed MW:

18 kDa

### Purification Method:

Protein A purification

### CloneNo.:

2H6

## Applications

### Tested Applications:

WB, IHC, IF/ICC, IF-P, Indirect ELISA

### Species Specificity:

human, mouse, rat

## Background Information

Stathmin 1 (STMN1) normally regulates microtubule dynamics either by sequestering free tubulin heterodimers or by promoting microtubule catastrophe. STMN1 is highly expressed in fetal and adult brain, spinal cord, and cerebellum. Many different phosphorylated forms are observed depending on specific combinations among the sites which can be phosphorylated. Phosphorylation of stathmin is involved in response to NGF, neuron polarization and microtubule polymerization inhibition activity. Increased expression of STMN1 has been observed in a variety of human malignancies, such as colorectal primary tumors and metastatic tissues, but its association with melanoma is so far not well known.

## Storage

### Storage:

Store at -80°C.

### Storage Buffer:

PBS only, pH7.3

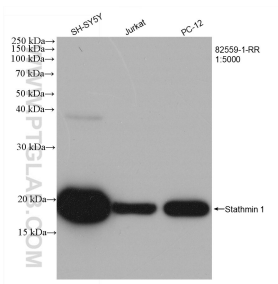
For technical support and original validation data for this product please contact:

T: 1 (888) 4PTGLAB (1-888-478-4522) (toll free in USA), or 1(312) 455-8498 (outside USA)

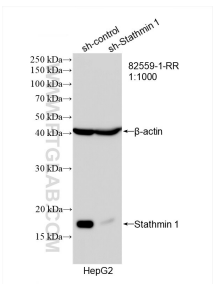
E: [proteintech@ptglab.com](mailto:proteintech@ptglab.com)  
W: [ptglab.com](http://ptglab.com)

This product is exclusively available under Proteintech Group brand and is not available to purchase from any other manufacturer.

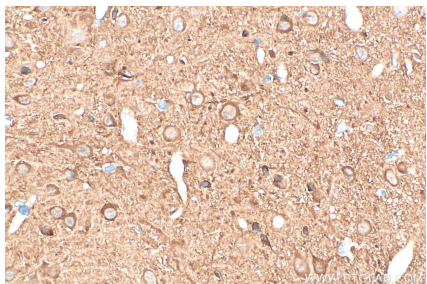
Selected Validation Data



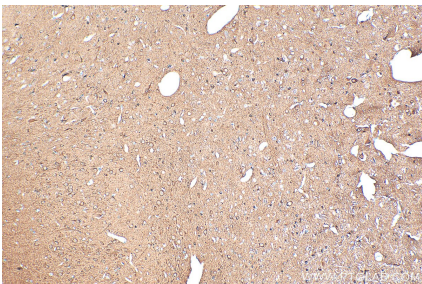
Various lysates were subjected to SDS PAGE followed by western blot with 82559-1-RR (Stathmin 1 antibody) at dilution of 1:5000 incubated at room temperature for 1.5 hours. This data was developed using the same antibody clone with 82559-1-PBS in a different storage buffer formulation.



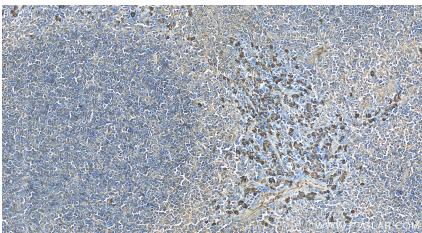
WB result of Stathmin 1 antibody (82559-1-RR; 1:1000; incubated at room temperature for 1.5 hours) with sh-Control and sh-Stathmin 1 transfected HepG2 cells. This data was developed using the same antibody clone with 82559-1-PBS in a different storage buffer formulation.



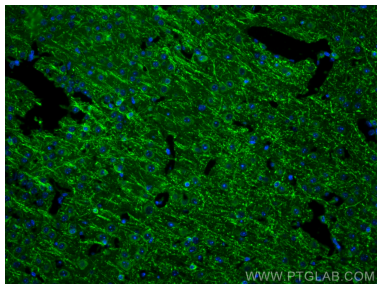
Immunohistochemical analysis of paraffin-embedded rat brain tissue slide using 82559-1-RR (Stathmin 1 antibody) at dilution of 1:2000 (under 40x lens). Heat mediated antigen retrieval with Tris-EDTA buffer (pH 9.0). This data was developed using the same antibody clone with 82559-1-PBS in a different storage buffer formulation.



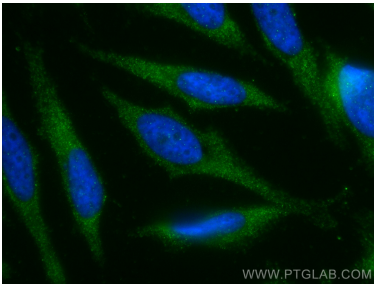
Immunohistochemical analysis of paraffin-embedded rat brain tissue slide using 82559-1-RR (Stathmin 1 antibody) at dilution of 1:2000 (under 10x lens). Heat mediated antigen retrieval with Tris-EDTA buffer (pH 9.0). This data was developed using the same antibody clone with 82559-1-PBS in a different storage buffer formulation.



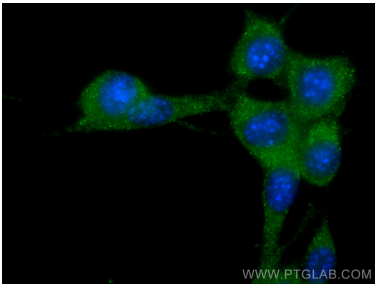
Immunohistochemical analysis of paraffin-embedded human tonsillitis tissue slide using 82559-1-RR (Stathmin 1 antibody) at dilution of 1:400 (under 40x lens). Heat mediated antigen retrieval with Tris-EDTA buffer (pH 9.0). This data was developed using the same antibody clone with 82559-1-PBS in a different storage buffer formulation.



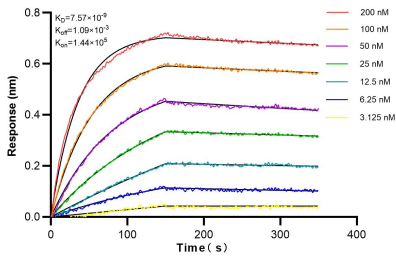
Immunofluorescent analysis of (4% PFA) fixed paraffin-embedded mouse brain tissue using Stathmin 1 antibody (82559-1-RR, Clone: 2H6) at dilution of 1:500 and Multi-rAb CoraLite @ Plus 488-Goat Anti-Rabbit Recombinant Secondary Antibody (H+L) (RGAR002). Heat mediated antigen retrieval with Tris-EDTA buffer (pH 9.0). This data was developed using the same antibody clone with 82559-1-PBS in a different storage buffer formulation.



Immunofluorescent analysis of (-20°C Methanol) fixed HeLa cells using Stathmin 1 antibody (82559-1-RR, Clone: 2H6) at dilution of 1:1000 and CoraLite@488-Conjugated AffiniPure Goat Anti-Rabbit IgG(H+L). This data was developed using the same antibody clone with 82559-1-PBS in a different storage buffer formulation.



Immunofluorescent analysis of (-20°C Methanol) fixed NIH/3T3 cells using Stathmin 1 antibody (82559-1-RR, Clone: 2H6) at dilution of 1:1000 and CoraLite@488-Conjugated AffiniPure Goat Anti-Rabbit IgG(H+L). This data was developed using the same antibody clone with 82559-1-PBS in a different storage buffer formulation.



Bi-layer interferometry (BLI) kinetic assays of 82559-1-RR against Human Stathmin 1 were performed. The affinity constant is 7.57 nM.