

For Research Use Only

SPHK1 Recombinant antibody

Catalog Number: 82609-1-RR



Basic Information

Catalog Number: 82609-1-RR	GenBank Accession Number: BC008040	Purification Method: Protein A purification
Size: 100ul , Concentration: 500 ug/ml by Nanodrop;	GeneID (NCBI): 8877	CloneNo.: 2K12
Source: Rabbit	UNIPROT ID: Q9NYA1	Recommended Dilutions: WB 1:1000-1:5000 IF/ICC 1:200-1:800
Isotype: IgG	Full Name: sphingosine kinase 1	
Immunogen Catalog Number: AG1051	Calculated MW: 43 kDa	
	Observed MW: 42 kDa	

Applications

Tested Applications: WB, IF/ICC, ELISA	Positive Controls:
Species Specificity: human, mouse	WB : HepG2 cells, L02 cells, MCF-7 cells, NIH/3T3 cells IF/ICC : HepG2 cells,

Background Information

SPHK(Sphingosine kinase 1) is also named as SPHK, SPK.It catalyzes the phosphorylation of sphingosine to form sphingosine 1-phosphate (SPP), a lipid mediator with both intra- and extracellular functions and is precariously perched at the balance point between progrowth and pro-death signalling in the cell.Endogenous SPHK1 purified from placenta has identical enzymatic characteristics, suggesting posttranslational modification does not effect functional properties(PMID:10947957).It has 2 isoforms produced by alternative splicing and can form the oligomeric structure(PMID:22335554).

Storage

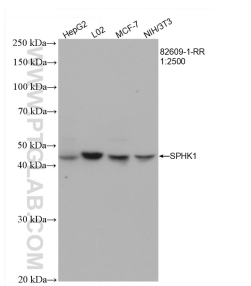
Storage:
Store at -20°C. Stable for one year after shipment.
Storage Buffer:
PBS with 0.02% sodium azide and 50% glycerol pH 7.3.
Aliquoting is unnecessary for -20°C storage

*** 20ul sizes contain 0.1% BSA

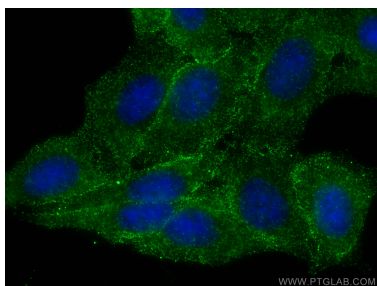
For technical support and original validation data for this product please contact:
T: 1 (888) 4PTGLAB (1-888-478-4522) (toll free in USA), or 1(312) 455-8498 (outside USA)
E: proteintech@ptglab.com
W: ptglab.com

This product is exclusively available under Proteintech Group brand and is not available to purchase from any other manufacturer.

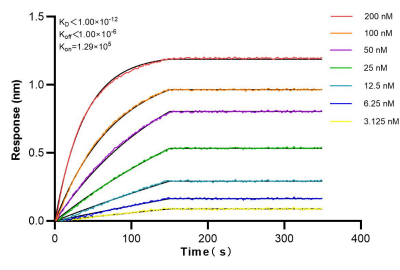
Selected Validation Data



Various lysates were subjected to SDS PAGE followed by western blot with 82609-1-RR (SPHK1 antibody) at dilution of 1:2500 incubated at room temperature for 1.5 hours.



Immunofluorescent analysis of (-20°C Ethanol) fixed HepG2 cells using SPHK1 antibody (82609-1-RR, Clone: 2K12) at dilution of 1:400 and CoraLite®488-Conjugated AffiniPure Goat Anti-Rabbit IgG(H+L).



Biolayer interferometry (BLI) kinetic assays of 82609-1-RR against Human SPHK1 were performed. The affinity constant is below 1 pM.