

For Research Use Only

GCLM Recombinant antibody

Catalog Number: 82623-1-RR

Featured Product



Basic Information

Catalog Number:

82623-1-RR

Size:

100ul, Concentration: 1000 ug/ml by Nanodrop;

Source:

Rabbit

Isotype:

IgG

Immunogen Catalog Number:

AG5497

GenBank Accession Number:

BC041809

GeneID (NCBI):

2730

UNIPROT ID:

P48507

Full Name:

glutamate-cysteine ligase, modifier subunit

Calculated MW:

31 kDa

Observed MW:

31 kDa

Purification Method:

Protein A purification

CloneNo.:

4K16

Recommended Dilutions:

WB 1:5000-1:50000

IHC 1:500-1:2000

Applications

Tested Applications:

WB, IHC, ELISA

Species Specificity:

human, mouse, rat

Note-IHC: suggested antigen retrieval with TE buffer pH 9.0; (*) Alternatively, antigen retrieval may be performed with citrate buffer pH 6.0

Positive Controls:

WB : HeLa cells, RAW 264.7 cells, HEK-293 cells, A431 cells, Jurkat cells, K-562 cells, HSC-T6 cells

IHC : mouse brain tissue, human ovarian cancer, human skin cancer tissue

Background Information

GCLM (Glutamate-cysteine ligase regulatory subunit) is also named as GLCLR and belongs to the aldo/keto reductase family. It catalyzes the first step of GSH synthesis and is involved in gamma-glutamyl cycle. GCLM is implicated in some forms of hemolytic anemia.

Storage

Storage:

Store at -20°C. Stable for one year after shipment.

Storage Buffer:

PBS with 0.02% sodium azide and 50% glycerol pH 7.3.

Aliquoting is unnecessary for -20°C storage

*** 20ul sizes contain 0.1% BSA

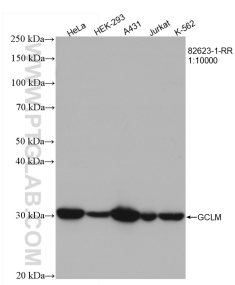
For technical support and original validation data for this product please contact:

T: 1 (888) 4PTGLAB (1-888-478-4522) (toll free in USA), or 1(312) 455-8498 (outside USA)

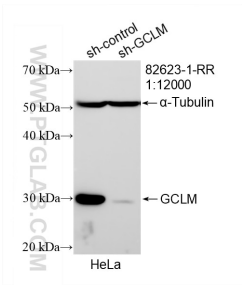
E: proteintech@ptglab.com
W: ptglab.com

This product is exclusively available under Proteintech Group brand and is not available to purchase from any other manufacturer.

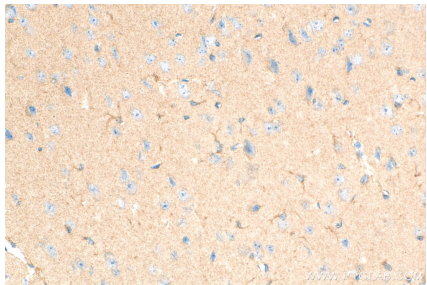
Selected Validation Data



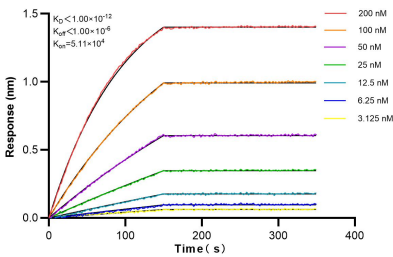
Various lysates were subjected to SDS PAGE followed by western blot with 82623-1-RR (GCLM antibody) at dilution of 1:10000 incubated at room temperature for 1.5 hours.



WB result of GCLM antibody (82623-1-RR; 1:12000; incubated at room temperature for 1.5 hours) with sh-Control and sh-GCLM transfected HeLa cells.



Immunohistochemical analysis of paraffin-embedded mouse brain tissue slide using 82623-1-RR (GCLM antibody) at dilution of 1:1000 (under 40x lens). Heat mediated antigen retrieval with Tris-EDTA buffer (pH 9.0).



Biolayer interferometry (BLI) kinetic assays of 82623-1-RR against Human GCLM were performed. The affinity constant is below 1 pM.