

For Research Use Only

Rat IL2 Recombinant antibody, PBS Only (Detector)

Catalog Number: 82626-5-PBS



Basic Information

Catalog Number: 82626-5-PBS	GenBank Accession Number: NM_053836	Purification Method: Protein A purification
Size: 100ug , Concentration: 1 mg/ml by Nanodrop;	GeneID (NCBI): 116562	CloneNo.: 240264F4
Source: Rabbit	UNIPROT ID: P17108	
Isotype: IgG	Full Name: interleukin 2	
	Calculated MW: 18 kDa	

Applications

Tested Applications:
Sandwich ELISA, Indirect ELISA, Sample test

Species Specificity:
rat

Product Information

82626-5-PBS targets IL2 as part of a matched antibody pair:

MP00535-3: 82626-2-PBS capture and 82626-5-PBS detection (validated in Sandwich ELISA)

Unconjugated rabbit recombinant monoclonal antibody in PBS only (BSA and azide free) storage buffer at a concentration of 1 mg/mL, ready for conjugation. Created using Proteintech's proprietary in-house recombinant technology. Recombinant production enables unrivalled batch-to-batch consistency, easy scale-up, and future security of supply.

This conjugation ready format makes antibodies ideal for use in many applications including: ELISAs, multiplex assays requiring matched pairs, mass cytometry, and multiplex imaging applications. Antibody use should be optimized by the end user for each application and assay.

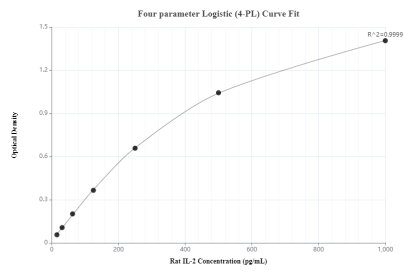
Storage

Storage:
Store at -80°C.
Storage Buffer:
PBS Only

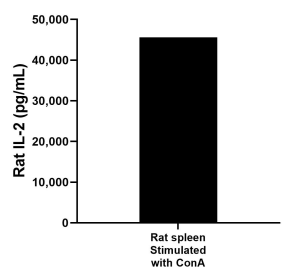
For technical support and original validation data for this product please contact:
T: 1 (888) 4PTGLAB (1-888-478-4522) (toll free in USA), or 1(312) 455-8498 (outside USA)
E: proteintech@ptglab.com
W: ptglab.com

This product is exclusively available under Proteintech Group brand and is not available to purchase from any other manufacturer.

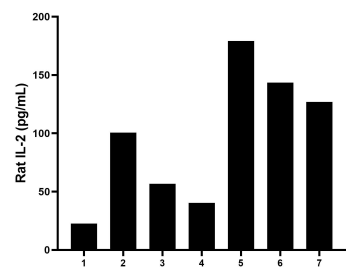
Selected Validation Data



Sandwich ELISA standard curve of MP00535-3, rat IL-2 Recombinant Matched Antibody Pair - PBS only. 82626-2-PBS was coated to a plate as the capture antibody and incubated with serial dilutions of standard Eg0260. 82626-5-PBS was HRP conjugated as the detection antibody. Range: 15.6-1000 pg/mL.



Rat spleen, cut into 1-2 mm pieces, was cultured for 3-4 days in 25-30 mL of RPMI supplemented with 10% fetal bovine serum and stimulated with 10 µg/mL ConA. The cell culture supernate was removed, assayed for rat IL-2, and measured 45,596.05 pg/mL.



Serum of seven rats was measured. The IL-2 concentration of detected samples was determined to be 95.71 pg/mL with a range of ND - 179.2 pg/mL.