

For Research Use Only

SREBF1 Recombinant antibody

Catalog Number: 82684-3-RR

Featured Product



Basic Information

Catalog Number:

82684-3-RR

Size:

100ul, Concentration: 800 ug/ml by Nanodrop;

Source:

Rabbit

Isotype:

IgG

Immunogen Catalog Number:

AG5219

GenBank Accession Number:

BC063281

GeneID (NCBI):

6720

UNIPROT ID:

P36956

Full Name:

sterol regulatory element binding transcription factor 1

Calculated MW:

1177 aa, 125 kDa

Observed MW:

68 kDa, 125 kDa

Purification Method:

Protein A purification

CloneNo.:

1P4

Recommended Dilutions:

WB 1:1000-1:8000

Applications

Tested Applications:

WB, FC (Intra), ELISA

Species Specificity:

human

Positive Controls:

WB : HeLa cells, MCF-7 cells, A549 cells, K-562 cells

Background Information

SREBF1, also named as BHLHD1 and SREBP1, contains one basic helix-loop-helix (bHLH) domain and belongs to the SREBP family. It is a transcriptional activator required for lipid homeostasis. The SREBPs are synthesized as precursors anchored to endoplasmic reticulum (ER) membranes and complexed with SCAP. When the cellular cholesterol level is low, SREBP-SCAP complexes move to the Golgi apparatus, where SREBPs undergo a two-step proteolytic processing, leading to the release of the mature form, an N-terminal fragment, i.e., basic helix-loop-helix leucine zipper transcription factor. These factors enter the nucleus where they bind to sterol regulatory elements (SRE) in the promoter regions of a number of genes whose products mediate the synthesis of cholesterol and fatty acids. [PMID: 21698267].

Storage

Storage:

Store at -20°C. Stable for one year after shipment.

Storage Buffer:

PBS with 0.02% sodium azide and 50% glycerol pH 7.3.

Aliquoting is unnecessary for -20°C storage

*** 20ul sizes contain 0.1% BSA

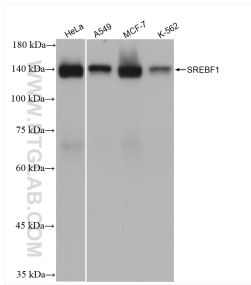
For technical support and original validation data for this product please contact:

T: 1 (888) 4PTGLAB (1-888-478-4522) (toll free in USA), or 1(312) 455-8498 (outside USA)

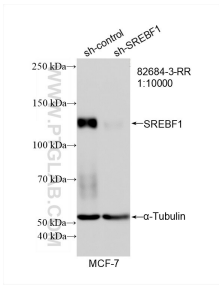
E: proteintech@ptglab.com
W: ptglab.com

This product is exclusively available under Proteintech Group brand and is not available to purchase from any other manufacturer.

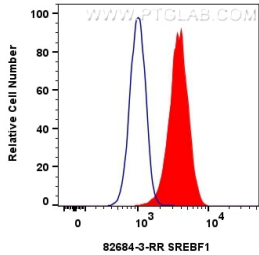
Selected Validation Data



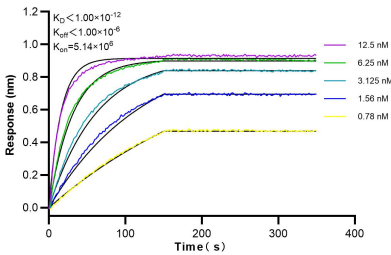
HeLa cells were subjected to SDS PAGE followed by western blot with 82684-3-RR (SREBF1 antibody) at dilution of 1:4000 incubated at room temperature for 1.5 hours.



WB result of SREBF1 antibody (82684-3-RR; 1:10000; incubated at room temperature for 1.5 hours) with sh-Control and sh-SREBF1 transfected MCF-7 cells.



1x10⁶ HepG2 cells were intracellularly stained with 0.25 ug SREBF1 Recombinant antibody (82684-3-RR, Clone:1P4) and CoraLite®488-Conjugated AffiniPure Goat Anti-Rabbit IgG(H+L) (SA00013-2) (red), or 0.25 ug Isotype Control (blue). Cells were fixed with 4% PFA and permeabilized with Flow Cytometry Perm Buffer (PF00011-C).



Biolayer interferometry (BLI) kinetic assays of 82684-3-RR against Human SREBF1 were performed. The affinity constant is below 1 pM.