

For Research Use Only

IRE1/ERN1 Recombinant antibody, PBS Only

Catalog Number: 82687-5-PBS



Basic Information

Catalog Number: 82687-5-PBS	GenBank Accession Number: BC130405	Purification Method: Protein A purification
Size: 100ug, Concentration: 1 mg/ml by Nanodrop;	GeneID (NCBI): 2081	CloneNo.: 250145G7
Source: Rabbit	UNIPROT ID: O75460	
Isotype: IgG	Full Name: endoplasmic reticulum to nucleus signaling 1	
Immunogen Catalog Number: AG25580	Calculated MW: 977 aa, 110 kDa	
	Observed MW: 130 kDa	

Applications

Tested Applications:
WB, Indirect ELISA

Species Specificity:
human, mouse, rat

Background Information

Inositol-requiring enzyme 1 (IRE1) is an ER transmembrane sensor that activates the UPR to maintain the ER and cellular function. Although mammalian IRE1 promotes cell survival, it can initiate apoptosis via decay of antiapoptotic miRNAs. IRE1 contains a ribonuclease domain in its cytoplasmic region which initiates splicing reaction by direct cleavage of XBP1 mRNA at the two stem loop structures. IRE1 plays instrumental protumoral roles in several cancers, and high IRE1 activity has been associated with poorer prognoses. (PMID: 23880584, PMID: 32861679, PMID: 31875595)

Storage

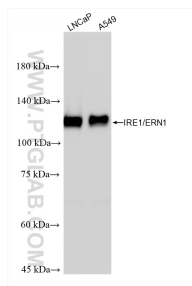
Storage:
Store at -80°C.

Storage Buffer:
PBS only, pH7.3

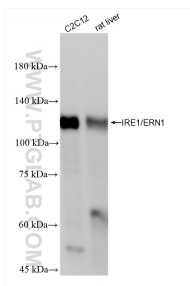
For technical support and original validation data for this product please contact:
T: 1 (888) 4PTGLAB (1-888-478-4522) (toll free in USA), or 1(312) 455-8498 (outside USA)
E: proteintech@ptglab.com
W: ptglab.com

This product is exclusively available under Proteintech Group brand and is not available to purchase from any other manufacturer.

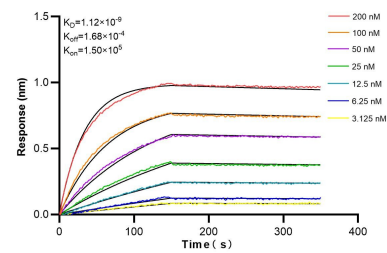
Selected Validation Data



Various lysates were subjected to SDS PAGE followed by western blot with 82687-5-RR (IRE1; ERN1 antibody) at dilution of 1:5000 incubated at room temperature for 1.5 hours. This data was developed using the same antibody clone with 82687-5-PBS in a different storage buffer formulation.



Various lysates were subjected to SDS PAGE followed by western blot with 82687-5-RR (IRE1; ERN1 antibody) at dilution of 1:5000 incubated at room temperature for 1.5 hours. This data was developed using the same antibody clone with 82687-5-PBS in a different storage buffer formulation.



Biolayer interferometry (BLI) kinetic assays of 82687-5-RR against Human IRE1/ERN1 were performed. The affinity constant is 1.12 nM.