

For Research Use Only

# IL-1 Beta Recombinant antibody

Catalog Number: 82696-6-RR



## Basic Information

<b>Catalog Number:</b> 82696-6-RR	<b>GenBank Accession Number:</b> BC008678	<b>Purification Method:</b> Protein A purification
<b>Size:</b> 100ul , Concentration: 1000 µg/ml by Nanodrop;	<b>GeneID (NCBI):</b> 3553	<b>CloneNo.:</b> 3I9
<b>Source:</b> Rabbit	<b>ENSEMBL Gene ID:</b> ENSG00000125538	<b>Recommended Dilutions:</b> WB 1:2000-1:10000
<b>Isotype:</b> IgG	<b>UNIPROT ID:</b> P01584	
	<b>Full Name:</b> interleukin 1, beta	
	<b>Calculated MW:</b> 269 aa, 31 kDa	
	<b>Observed MW:</b> 30-35 kDa	

## Applications

<b>Tested Applications:</b> WB, ELISA	<b>Positive Controls:</b> WB : LPS and Protein transport inhibitor treated THP-1 cells,
<b>Species Specificity:</b> Human	

## Product Information

82696-6-RR targets IL-1 Beta as part of a matched antibody pair:

MP80001-1: 82696-6-RR capture and 65276-1-PBS detection (validated in Cytometric bead array, Sandwich ELISA)

MP80001-2: 82696-6-RR capture and 68767-1-PBS detection (validated in Cytometric bead array, Sandwich ELISA)

Unconjugated rabbit recombinant monoclonal antibody in PBS only (BSA and azide free) storage buffer at a concentration of 1 mg/mL, ready for conjugation. Created using Proteintech's proprietary in-house recombinant technology. Recombinant production enables unrivalled batch-to-batch consistency, easy scale-up, and future security of supply.

This conjugation ready format makes antibodies ideal for use in many applications including: ELISAs, multiplex assays requiring matched pairs, mass cytometry, and multiplex imaging applications. Antibody use should be optimized by the end user for each application and assay.

## Background Information

Interleukin-1 is a pro-inflammatory cytokine with multiple biological effects. The IL-1 gene family encodes three proteins: IL-1 $\alpha$ , IL-1 $\beta$  and their naturally occurring inhibitor IL-1RN. IL-1 Beta(IL-1 $\beta$ ), mainly produced by blood monocytes and tissue macrophages, has been implicated in mediating both acute and chronic inflammation. IL-1 $\beta$  is known to be involved in a variety of cellular activities, including cell proliferation, differentiation and apoptosis. IL-1 $\beta$  is emerging as a key mediator of carcinogenesis that characterizes host-environment interactions. Human IL-1 $\beta$  is synthesized as a 31 kDa precursor. To gain activity, the precursor must be cleaved by caspase-1 between Asp116 and Ala117 to yield a 17 kDa mature form.

## Storage

**Storage:**  
Store at -20°C. Stable for one year after shipment.

**Storage Buffer:**  
PBS with 0.02% sodium azide and 50% glycerol pH 7.3.

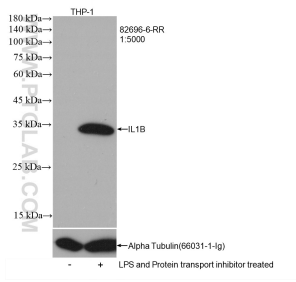
Aliquoting is unnecessary for -20°C storage

\*\*\* 20ul sizes contain 0.1% BSA

For technical support and original validation data for this product please contact:  
T: 1 (888) 4PTGLAB (1-888-478-4522) (toll free in USA), or 1(312) 455-8498 (outside USA)  
E: proteintech@ptglab.com  
W: ptglab.com

This product is exclusively available under Proteintech Group brand and is not available to purchase from any other manufacturer.

## Selected Validation Data



LPS and Protein transport inhibitor treated THP-1 cells were subjected to SDS PAGE followed by western blot with 82696-6-RR (IL1B antibody) at dilution of 1:5000 incubated at room temperature for 1.5 hours.