

For Research Use Only

NR1D1 Recombinant monoclonal antibody, PBS Only

Catalog Number: 82699-7-PBS



Basic Information

Catalog Number: 82699-7-PBS	GenBank Accession Number: BC056148	Purification Method: Protein A purification
Size: 100ug, Concentration: 1 mg/ml by Nanodrop;	GeneID (NCBI): 9572	CloneNo.: 251520G1
Source: Rabbit	UNIPROT ID: P20393	
Isotype: IgG	Full Name: nuclear receptor subfamily 1, group D, member 1	
Immunogen Catalog Number: AG5964	Calculated MW: 67 kDa	
	Observed MW: 68 kDa	

Applications

Tested Applications:
WB, Indirect ELISA

Species Specificity:
human, mouse

Background Information

NR1D1, also named EAR1, THRAL, ear-1, and hRev, contains one nuclear receptor DNA-binding domain and belongs to the nuclear hormone receptor family, NR1 subfamily. This protein functions as a constitutive transcriptional repressor. It is a possible receptor for triiodothyronine. BMAL1-CLOCK activates Rev-erba itself and thereby represents the link between the positive and negative loops of the circadian clock. This is a rabbit polyclonal antibody raised against the N terminus of human NR1D1.

Storage

Storage:
Store at -80°C.

Storage Buffer:
PBS only, pH7.3

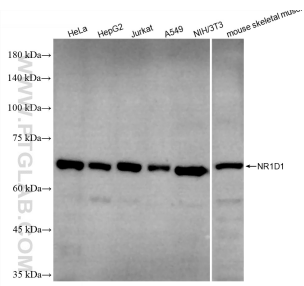
For technical support and original validation data for this product please contact:

T: 1 (888) 4PTGLAB (1-888-478-4522) (toll free in USA), or 1(312) 455-8498 (outside USA)

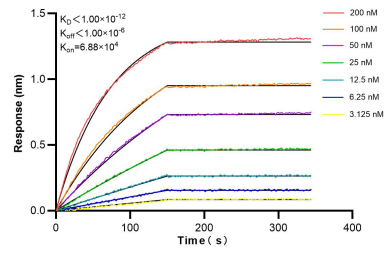
E: proteintech@ptglab.com
W: ptglab.com

This product is exclusively available under Proteintech Group brand and is not available to purchase from any other manufacturer.

Selected Validation Data



Various lysates were subjected to SDS PAGE followed by western blot with 82699-7-RR (NR1D1 antibody) at dilution of 1:2000 incubated at room temperature for 1.5 hours. This data was developed using the same antibody clone with 82699-7-PBS in a different storage buffer formulation.



Biolayer interferometry (BLI) kinetic assays of 82699-7-RR against Human NR1D1 were performed. The affinity constant is below 1 pM.