

For Research Use Only

CPT1B Recombinant antibody

Catalog Number: 82701-3-RR



Basic Information

Catalog Number: 82701-3-RR	GenBank Accession Number: BC131570	Purification Method: Protein A purification
Size: 100ul , Concentration: 1000 µg/ml by Nanodrop;	GeneID (NCBI): 1375	CloneNo.: 242881B6
Source: Rabbit	UNIPROT ID: Q92523	Recommended Dilutions: WB 1:5000-1:50000 IHC 1:250-1:1000 IF-P 1:250-1:1000
Isotype: IgG	Full Name: carnitine palmitoyltransferase 1B (muscle)	
Immunogen Catalog Number: AG17840	Calculated MW: 567 aa, 64 kDa	
	Observed MW: 70-85 kDa	

Applications

Tested Applications: WB, IHC, IF-P, ELISA	Positive Controls:
Species Specificity: mouse	WB : mouse heart tissue,
Note-IHC: suggested antigen retrieval with TE buffer pH 9.0; (*) Alternatively, antigen retrieval may be performed with citrate buffer pH 6.0	IHC : mouse heart tissue,
	IF-P : mouse heart tissue,

Storage

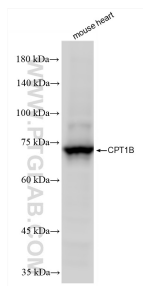
Storage:
Store at -20°C. Stable for one year after shipment.
Storage Buffer:
PBS with 0.02% sodium azide and 50% glycerol, pH7.3
Aliquoting is unnecessary for -20°C storage

*** 20ul sizes contain 0.1% BSA

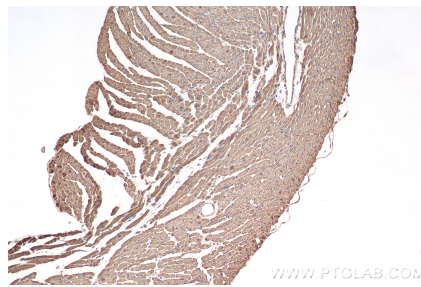
For technical support and original validation data for this product please contact:
T: 1 (888) 4PTGLAB (1-888-478-4522) (toll free in USA), or 1(312) 455-8498 (outside USA)
E: proteintech@ptglab.com
W: ptglab.com

This product is exclusively available under Proteintech Group brand and is not available to purchase from any other manufacturer.

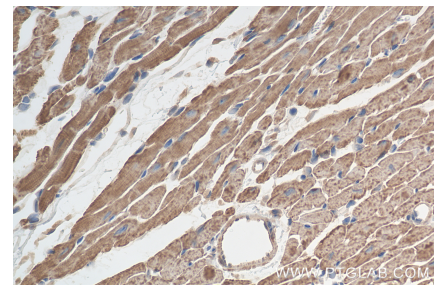
Selected Validation Data



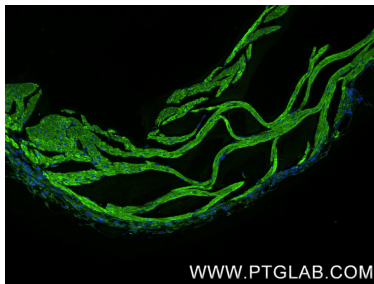
mouse heart tissue were subjected to SDS PAGE followed by western blot with 82701-3-RR (CPT1B antibody) at dilution of 1:40000 incubated at room temperature for 1.5 hours.



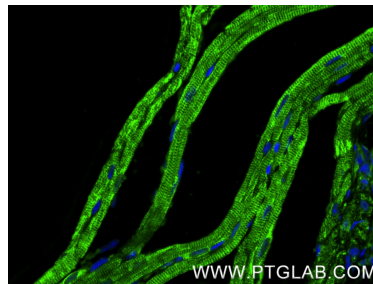
Immunohistochemical analysis of paraffin-embedded mouse heart tissue slide using 82701-3-RR (CPT1B antibody) at dilution of 1:500 (under 10x lens). Heat mediated antigen retrieval with Tris-EDTA buffer (pH 9.0).



Immunohistochemical analysis of paraffin-embedded mouse heart tissue slide using 82701-3-RR (CPT1B antibody) at dilution of 1:500 (under 40x lens). Heat mediated antigen retrieval with Tris-EDTA buffer (pH 9.0).



Immunofluorescent analysis of (4% PFA) fixed paraffin-embedded mouse heart tissue using CPT1B antibody (82701-3-RR, Clone: 242881B6) at dilution of 1:0 and CoraLite®488-Conjugated Goat Anti-Rabbit IgG(H+L) (SA00013-2). Heat mediated antigen retrieval with Tris-EDTA buffer (pH 9.0).



Immunofluorescent analysis of (4% PFA) fixed paraffin-embedded mouse heart tissue using CPT1B antibody (82701-3-RR, Clone: 242881B6) at dilution of 1:0 and CoraLite®488-Conjugated Goat Anti-Rabbit IgG(H+L) (SA00013-2). Heat mediated antigen retrieval with Tris-EDTA buffer (pH 9.0).